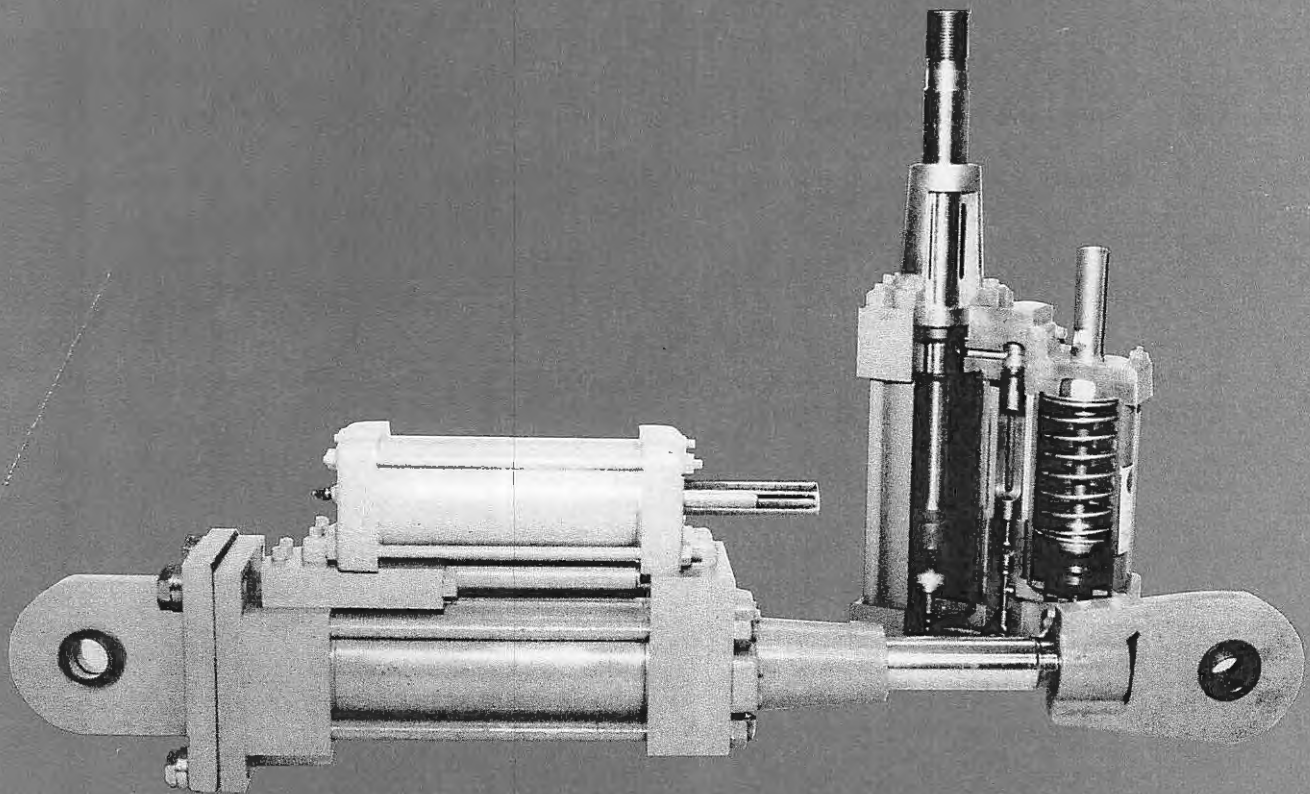




 **Anchor/Darling**  
**REPLACEMENT**  
**PARTS MANUAL**

For Hydraulic Snubbers



“This nuclear qualified Snubber line was the former Bergen-Paterson HSSA-2500 and is solely manufactured by Anchor/Darling.”



**Anchor/Darling**  
**REPLACEMENT**  
**PARTS MANUAL**

For Hydraulic Snubbers

General Information . . . . .	ii - vi
Software Parts List . . . . .	vii - ix
Hardware Parts List . . . . .	x - xii
Replacement Parts Index . . . . .	xiii, xiv
Replacement Parts . . . . .	1 - 70



# Anchor/Darling REPLACEMENT PARTS MANUAL

## GENERAL INFORMATION

### How to Use this Hydraulic Shock and Sway Arrestor Replacement Parts Manual

Anchor/Darling developed this Replacement Parts Book to aid its customers in determining the proper replacement parts for the several configurations of Hydraulic Shock and Sway Arrestors (HSSA's) that were previously supplied by Bergen-Paterson Pipesupport Corporation and are now manufactured by Anchor/Darling. This manual encompasses only those replacement parts for the Hydraulic Cylinder Assemblies and not for any paddle ends, attachment bolting, extension

struts, structural attachments, etc. Customers requiring replacement parts information on those items are directed to contact the nearest Anchor/Darling sales representative.

In order to determine the proper selection for replacement parts, the user of this manual must first determine the cylinder configuration type. Four different design configuration types as follows were supplied by Bergen-Paterson.

#### **TYPE E**

##### **The External Pipe Configuration Cylinder**

*Identifiable as having the flow control subassembly mounted to the side of the main cylinder. A small diameter tube connected the flow control body to the top mounted reservoir.*

#### **TYPE M**

##### **The Manifold Configuration Cylinder**

*Identifiable as sandwiching the flow control body between the main cylinder and top mounted reservoir. The piston rod gland was held in place utilizing the main cylinder tie rods and tie rod thread pitch was fine.*

#### **TYPE M77**

##### **The Flange Configuration Cylinder**

*Similar to the Type M, this configuration uses socket head cap screws to hold the piston rod gland in place and the main cylinder tie rods uses coarse pitch threads.*

#### **TYPE NF**

##### **The Extended Tie Rod Configuration Cylinder**

*Nearly identical to the Type M77, except that the base end mounting arrangement consisted of extended main cylinder tie rods and not a separate flange.*

This revision of the Parts Replacement Book discontinues most references to the Type E Cylinders. These units were supplied by Bergen-Paterson starting in mid 1969 and continuing until late 1972. Given the vintage of these units, Anchor/Darling has discontinued stocking these parts. Anchor/Darling recommends against rebuilding these cylinder types and replacing them with units manufactured to the current design. If further information regarding the Type E is required, contact your nearest Anchor/Darling sales representative.

Manifold Configuration Cylinders were supplied by Bergen-Paterson from late 1972 until early 1977. Anchor/Darling continues to offer the full line of replacement parts for the Type M units. Be aware that some of the Type M cylinders used stroke parts 0.06 inches less

length than the stated value for the part. If questions arise as to which replacement part should be used, contact Anchor/Darling Engineering.

Regarding M77 and NF configuration cylinders, Anchor/Darling presently manufactures these two configurations and they remain 100% interchangeable with cylinders previously supplied by Bergen-Paterson. However, Anchor/Darling has discontinued the usage of the terms "M77" and "NF" and now simply refers to those designations as either flanged or extended tie rod mount cylinders. Anchor/Darling has also replaced the Model No. 2500 designation used by Bergen-Paterson. Following is a comparison between the previous system used by Bergen-Paterson and the one currently used by Anchor/Darling.



# Anchor/Darling REPLACEMENT PARTS MANUAL

## GENERAL INFORMATION

### Bergen-Paterson Cylinder Designation Method:

**Model No:** HSSA 2500 (For All Configurations and Options)  
**Configuration:** M77 (Flange Mount)  
 NF (Extended Tie Rod)  
**Valve Option:** Relief (Specify 1.33:1 or 2:1 Spring)  
 Non-Relief (No Relief Section in Valve)  
**Stroke:** Specify 6", 12" or 18"  
**Serial No. System:** 2500 - XX - XXXX

|  
 Kip Size

|  
 Sequential Unit No.

### Anchor/Darling Cylinder Designation Method:

**Model No:** ADH-XX00 \_\_ (Flange Mount with Relief Valve)  
 ADH-XX01 \_\_ (Flange Mount Non-Relief Valve)  
 ADH-XX02 \_\_ (Extended Tie Rod with Relief Valve)  
 ADH-XX03 \_\_ (Extended Tie Rod Non-Relief Valve)

|  
 Kip Size

|  
 Stroke

**NOTES:**

**Relief Valve:** Standard is 1.33 to 1, if 2:1 Relief is required, append Model No. with "2:1."

**Stroke:** Left blank for 6", Include "L" for 12"  
 Include "XL" for 18"

**Serial No. System:** ADH-\_\_\_\_ - XXXX

|  
 Model No.

|  
 Sequential Unit No.

- Examples:**
- A) 20 Kip, Flange Mount, 6", Non-Relief  
 B-P: HSSA 2500-20, M77, Non-Relief  
 A/D: ADH-2001
  - B) 3 Kip, Extended Tie Rod, 12", Relief Valve  
 B-P: HSSA 2500-3, NF, 1.33:1 Relief  
 A/D: ADH-302L
  - C) 10 Kip, Flange Mount, 18", 2:1 Relief Valve  
 B-P: HSSA 2500-10, M77, 18", 2:1 Relief  
 A/D: ADH-1000XL, 2:1



# Anchor/Darling REPLACEMENT PARTS MANUAL

## GENERAL INFORMATION

After the design configuration has been determined, refer to the Index and select the applicable items. Work in conjunction with the HSSA Software/Hardware Parts Listing to determine what part or parts are needed and contact the sales office for ordering and pricing information.

**NOTE:** The parts listing retains the Bergen-Paterson designation for cylinder types. To choose the correct ADH model part, use the cross reference information provided on previous page.

When ordering replacement parts, the following information is required: Part Number and Length (if applicable), A/D Model No. or B-P Kip Size and Configuration, and Unit Stroke Length.

**NOTE:** Anchor/Darling believes that all previously supplied cylinders have been supplied with GE SF1154 hydraulic fluid and ethylene-propylene seals or have been retrofitted to this condition. If nuclear customers have reason to doubt this, they should contact A/D Engineering for confirmation of this Condition.

Information in this Parts Replacement Book concerns cylinders rated 3 through 200 kips in 6, 12 and 18 inch strokes. From February 1977 to January 1978, Bergen-Paterson produced several 3 kip through 200 kip 5.00" stroke, 10.00" stroke, 15.00" stroke and 20.00" stroke units with various mounting configurations. For replacement parts information concerning non-standard cylinders, consult your nearest sales representative.

## TABLE OF ABBREVIATIONS

### Codes

NF	.....	Extended Tie Rod Design Configuration
M77	.....	Flange Mount Design Configuration
M	.....	Manifold Design Configuration
E	.....	External Pipe Design Configuration
/	.....	Common to both Manifold and External Pipe Configuration

### Remarks

TIB	.....	Technical Information Bulletin	P/R	.....	Piston Rod	PSI	.....	Lb./Sq./In.
N/A	.....	**Not Available	CYL	.....	Cylinder	MTG	.....	Mounting
SUB	.....	Substitute	T/R	.....	Tie Rod	MAN	.....	Manifold
A/R	.....	Also Require	REQD	.....	Required	PROTECT	.....	Protective
ES	.....	Engineering Standard	EXT	.....	Extension - (Pull)	ASSY	.....	Assembly
LG	.....	*Long	COMP	.....	Compression - (Push)	CAL	.....	Calibrated
QTY	.....	Quantity	CONN	.....	Connector	NOT REQD.	.....	Not Required
C/F	.....	Consult Factory	FITT	.....	Fitting	M/C	.....	Main Cylinder
			RES	.....	Reservoir - (Accumulator)	MANUFD	.....	Manufactured

\* Indicates overall length of component (measure dimension from end to end)

\*\* Not available indicates that component parts followed by a 'N/A' are not readily available, are no longer manufactured for stock supplies or have been superseded and/or interchanged by a component part or parts of current HSSA design configuration and/or specification.



# Anchor/Darling REPLACEMENT PARTS MANUAL

## GENERAL INFORMATION

Component parts that are followed by a 'N/A' and other interchange remarks such as 'SUB,' 'A/R' and '+' have been superseded and/or interchanged by one or more component parts. The component or components listed in the interchange remarks column, ad-

acent to the component of specific interest, are those which are required to effect an interchange of a superseded part or parts. All of the parts listed in the interchange remarks column must be ordered separately.

### EXAMPLE #1:

2.50 Bore — Manifold Configuration  
Item #2 Cap, the line entry reads:

BORE	CODE	DRAWING	INTERCHANGE REMARKS
2.50	M	C13561	N/A SUB (1) 102-102 MAIN CYL. CAP* A/R (1) 107-002 SERIES CYL. TUBE + (1) 306-40000-000 MAIN CYL. HEAD + (2) 135-B9 + (2) 135-B11 MTG. SCREWS

\* NOTE: Existing flow control body and reservoir cap mounting holes must be reworked to .265 dia. and reservoir cap mounting holes spot faced .406 X .03 deep (1.50" bore thru 6.00" bore) .500 X .03 deep (8.00 + 10.00 bore).

C13561 has been superseded by 102-102 but, is not directly interchangeable alone. Additional components are required for the interchange conversion and rework of existing components. When these components are applied to the arrestor, they will meet or exceed the original specifications.

Component parts that are followed by a 'N/A,' and are without any interchange remarks, are those component parts which are no longer manufactured for

stock supplies and have not been superseded by a current design component. These parts are available on a special basis which includes:

1. Minimum quantity lot for manufacture
2. Extended lead time for delivery
3. Special pricing

Consult the factory concerning minimum lot size, price and delivery, as these items are no longer stocked.

### EXAMPLE #2:

2.50 Bore — External Pipe Configuration  
Item #2 Cap, the line entry reads:

BORE	CODE	DRAWING	INTERCHANGE REMARKS
2.50	E	B6121	N/A

B6121 has not been superseded, but, is no longer manufactured for stock supplies. Consult the factory

concerning minimum manufacturing lot size, price and delivery.



# Anchor/Darling REPLACEMENT PARTS MANUAL

## GENERAL INFORMATION

### STOCKING REQUIREMENTS

Stock Requirements must be determined at the power plant level. Components which should be included in a stocking program are as recommended on this page.

### LEAD TIMES\*

Anchor/Darling stocks most items listed in HSSA Parts Replacement Book. Lead time on stock items is approximately two to three weeks.

- Tubes, Tie Rods and  
Piston Rods ..... Stock to 10 Weeks
- Pistons and Glands ..... Stock to 10 Weeks
- Cylinder and  
Accumulator Heads ..... Stock to 10 Weeks
- Valves ..... Stock to 14 Weeks
- Soft Parts (Packing Kits) ..... Stock to 12 Weeks
- Special Purchase Items ..... 16 to 18 Weeks

\* Lead times are generally as stated but are subject to change due to demand and material availability.

Component parts that have been interchanged will be replaced by their equivalent component, of new design specification, which meets or exceeds the original component specification. These are the approved replacement parts.

### GENERAL RECOMMENDATION FOR SPARE PARTS

#### — Software —

Quantity of each Size HSSA Unit in Installation	Recommended Number of Seal Replacement Kits
1 - 5	1
6 - 10	2
11 - 30	6
31 - 60	10
61 - Up	20%

### GENERAL RECOMMENDATION FOR SPARE PARTS

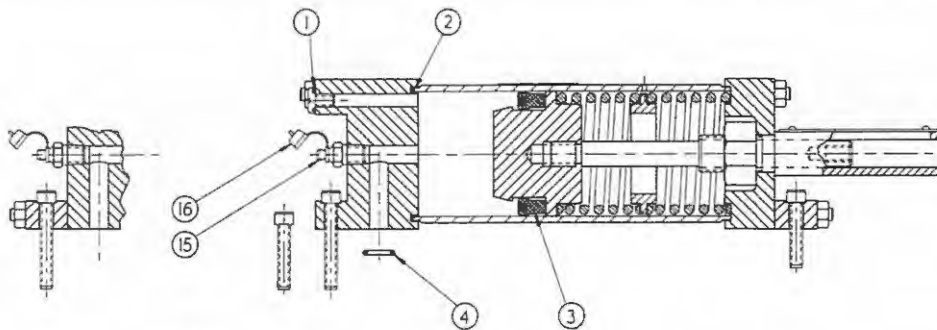
#### — Hardware —

ITEM	DESCRIPTION	RECOMMENDED QUANTITY
3, 5	Piston & Rings	2 sets per bore size in installation
6	Piston Rod	2 per bore stroke size in installation
10	Gland	3 glands per bore size
11	Tie Rod Nut	Quantity equal to 10% of total number of each bore size unit in installation
12	Cylinder Tie Rods	One set per bore-stroke size with reference to configuration
22	Poppet Springs	Total of (6) for each size unit in installation
23	Relief Valve Balls	Common for all size units — Total of (6) for installation
24	Relief Valve Springs	Common for all size units — Total of (2) for installation
49	Accumulator Spring	2 of each size
55	Accumulator Tie Rod Nuts	10% of each size
56, 61	Accumulator Tie Rods	Total of one set per Bore-Stroke
57	Rear Mounting Screw — long	Quantity equal to 10% of total number of each bore size unit in installation
58	Seal Screw	Common for all size units, 10% of total number of HSSA units in installation
60	Rear Mounting Screw	Quantity equal to 10% of total number of each bore size unit in installation
62	Front Mounting Screw	Quantity equal to 10% of total number of each bore size unit in installation
<b>FLUID</b>		
76	GE SF 1154 Silicone Fluid	(5) gallons

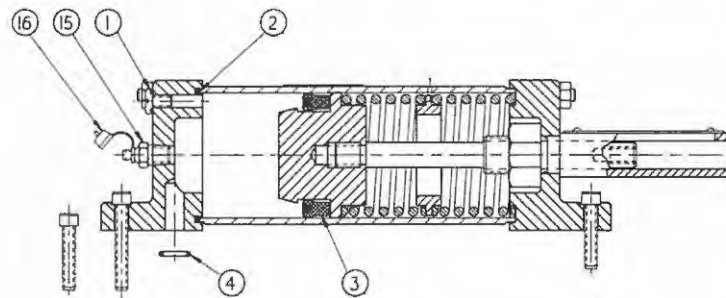
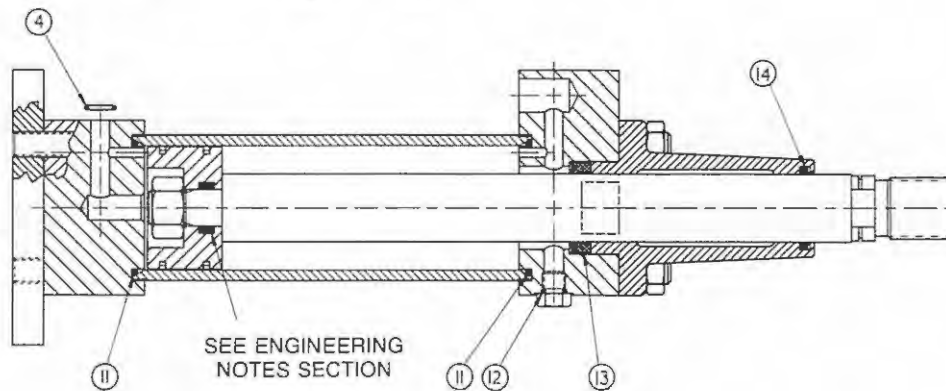


# Anchor/Darling REPLACEMENT PARTS MANUAL

## HSSA SOFTWARE PARTS LIST

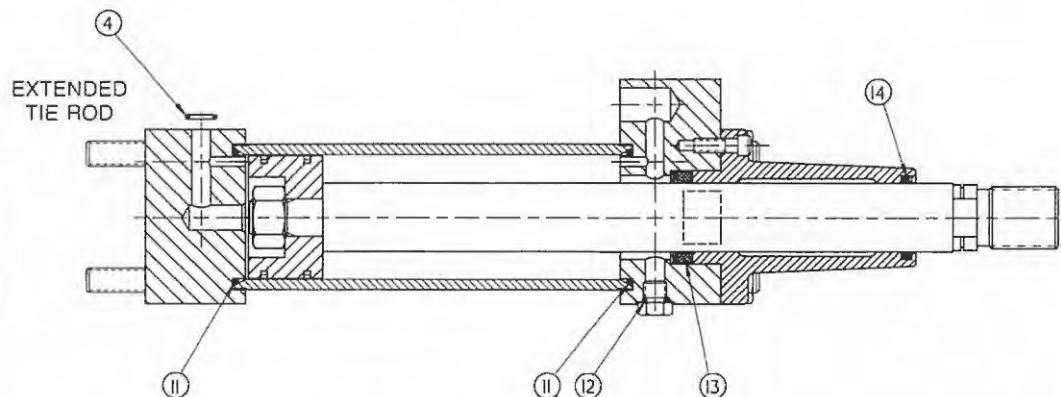
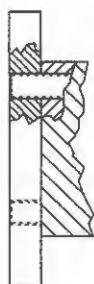


MANIFOLD  
CONFIGURATION  
MAIN CYLINDER  
and  
RESERVOIR  
SOFTWARE ITEMS



FLANGE MOUNT AND  
EXTENDED TIE ROD  
MAIN CYLINDER  
and  
RESERVOIR  
SOFTWARE ITEMS

FLANGE  
MOUNT

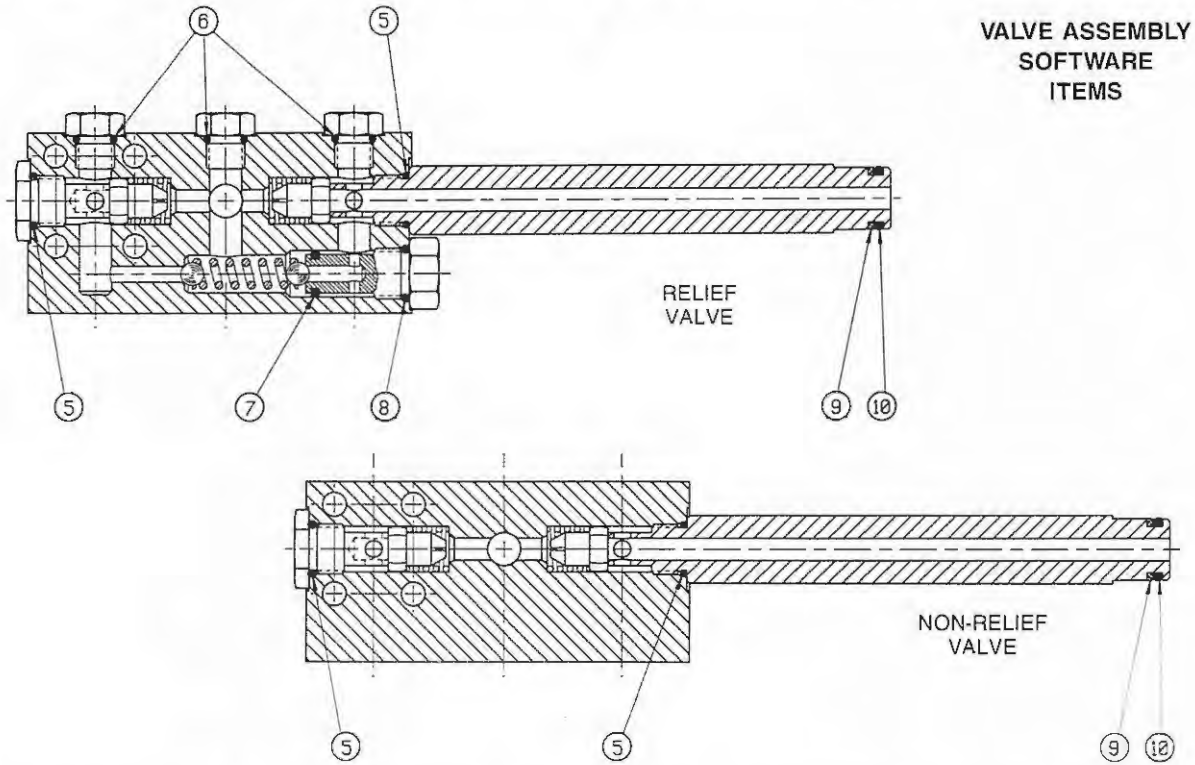






# Anchor/Darling REPLACEMENT PARTS MANUAL

## HSSA SOFTWARE PARTS LIST



VALVE ASSEMBLY  
SOFTWARE  
ITEMS

## EXTENDED TIE ROD, FLANGE MOUNT and MANIFOLD CONFIGURATION SOFTWARE PARTS LIST

ITEM	PART NAME	QTY	PART NUMBER							
			1.50 BORE	2.50 BORE	3.25 BORE	4.00 BORE	5.00 BORE	6.00 BORE	8.00 BORE	10.00 BORE
1	'O' RING	1	006-00024-010	006-00024-010	006-00024-010	006-00024-010	006-00024-010	006-00024-010	006-00024-010	006-00024-010
2	'O' RING	1	006-00029-032	006-00029-036	006-00029-151	006-00029-154	006-00029-158	006-00029-162	006-00023-265	006-00023-265
3	PISTON PACKING	1	006-00026-026	006-00026-031	006-00026-042	006-00026-049	006-00026-070	006-00026-073	006-00026-066	006-00026-066
4	'O' RING	2	006-00024-112	006-00024-112	006-00024-112	006-00024-112	006-00024-112	006-00024-112	006-00024-114	006-00024-114
5	'O' RING	2	006-00028-906	006-00028-906	006-00028-906	006-00028-906	006-00028-906	006-00028-906	006-00028-914	006-00028-914
6	'O' RING	3	006-00028-904	006-00028-904	006-00028-904	006-00028-904	006-00028-904	006-00028-904	006-00028-904	006-00028-904
7	'O' RING	1	006-00024-011	006-00024-011	006-00024-011	006-00024-011	006-00024-011	006-00024-011	006-00024-011	006-00024-011
8	'O' RING	1	006-00028-906	006-00028-906	006-00028-906	006-00028-906	006-00028-906	006-00028-906	006-00028-906	006-00028-906
9	BACK-UP WASHER	1	006-00030-000	006-00030-000	006-00030-000	006-00030-000	006-00030-000	006-00030-000	006-00030-001	006-00030-001
10	'O' RING	1	006-00024-112	006-00024-112	006-00024-112	006-00024-112	006-00024-112	006-00024-112	006-00025-117	006-00025-117
11	'O' RING	2	006-00025-128	006-00023-230	006-00023-236	006-00023-242	006-00023-250	006-00023-258	006-00023-266	006-00024-449
12	'O' RING	1	006-00028-904	006-00028-904	006-00028-904	006-00028-904	006-00028-904	006-00028-904	006-00028-906	006-00028-906
13	ROD PACKING	1	006-00026-021	006-00026-024	006-00026-028	006-00026-033	006-00026-040	006-00026-045	006-00026-050	006-00026-058
14	ROD WIPER	1	006-00027-003	006-00027-004	006-00027-005	006-00027-006	006-00027-007	006-00027-008	006-00027-009	006-00027-011
15	FILLER PLUG	1	506-00021-000	506-00021-000	506-00021-000	506-00021-000	506-00021-000	506-00021-000	506-00021-000	506-00021-000
16	FILLER PLUG DUST SEAL	1	1-1050-000	1-1050-000	1-1050-000	1-1050-000	1-1050-000	1-1050-000	1-1050-000	1-1050-000



# Anchor/Darling REPLACEMENT PARTS MANUAL

## HSSA SOFTWARE PARTS LIST

### HYDRAULIC SHOCK AND SWAY ARRESTOR SOFTWARE MASTER PART NUMBERS FOR REPLACEMENT SEAL KITS (See Engineering Notes Section)

CYLINDER BORE	MODEL HSSA	MATERIAL	KIT PART NUMBER
1.50	3	ETHYLENE-PROPYLENE	706-00211-002
2.50	10	ETHYLENE-PROPYLENE	706-00212-002
3.25	20	ETHYLENE-PROPYLENE	706-00213-002
4.00	30	ETHYLENE-PROPYLENE	706-00214-002
5.00	50	ETHYLENE-PROPYLENE	706-00215-002
6.00	70	ETHYLENE-PROPYLENE	706-00216-002
8.00	130	ETHYLENE-PROPYLENE	706-00218-002
10.00	200	ETHYLENE-PROPYLENE	706-00210-002

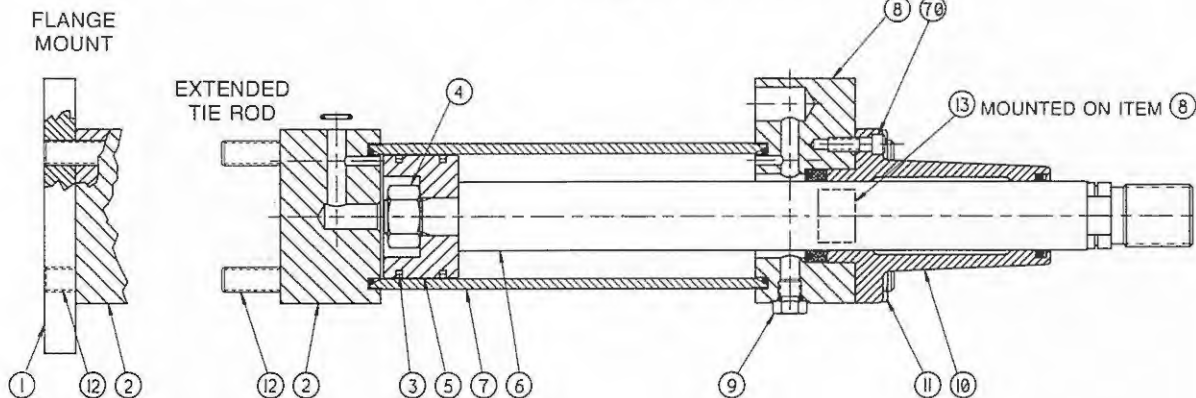
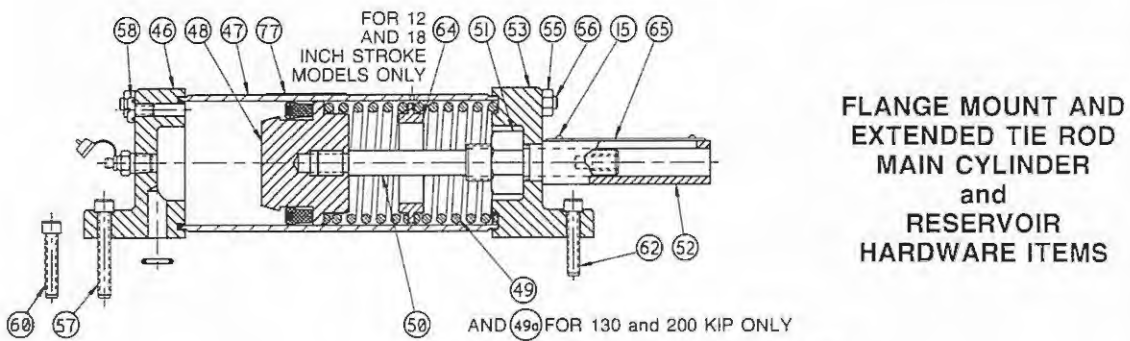
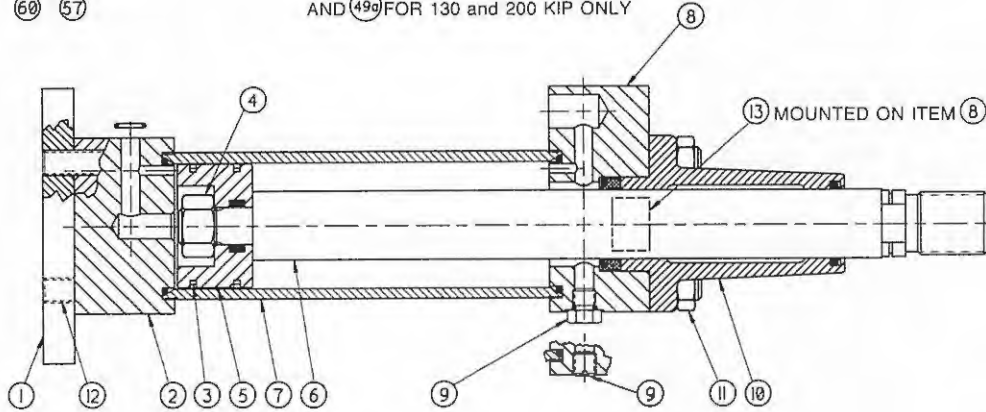
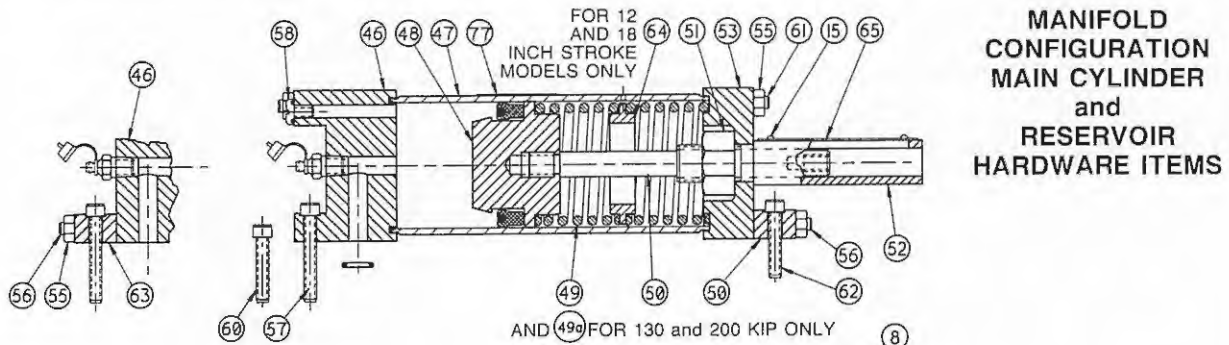
### ENGINEERING NOTES SECTION

1. The Software Master Replacement Kits shown above contain the quantities of parts listed in the chart on the preceding page for an HSSA of a given cylinder bore. The Master Kit allows complete rebuild of any of the three cylinder design configurations, i.e. Manifold, Flange or Extended Tie Rod. The Master Kit does not contain the seals required to rebuild an external pipe cylinder configuration. If the user wishes to obtain a Master Replacement Seal Kit for that type of cylinder, he is to contact the nearest Anchor/Darling Sales Representative for further details.
2. Anchor/Darling has revised the contents of the Master Kits to delete the O-rings used between the piston and piston rod as depicted for the manifold configuration cylinders. Engineering has determined that these O-rings do not require replacement during rebuild and that the ram subassembly (piston, piston rod & nut) should only be taken apart if the hardware items need replacement. If the ram subassembly is disassembled, it should be put back together without the O-rings. For further information regarding this subject, contact Anchor/Darling Engineering.

**ANCHOR/DARLING**  
32 Moulton Street  
Laconia, NH 03246  
TEL. (603) 528-1931 • FAX: (603) 528-6381

# Anchor/Darling REPLACEMENT PARTS MANUAL

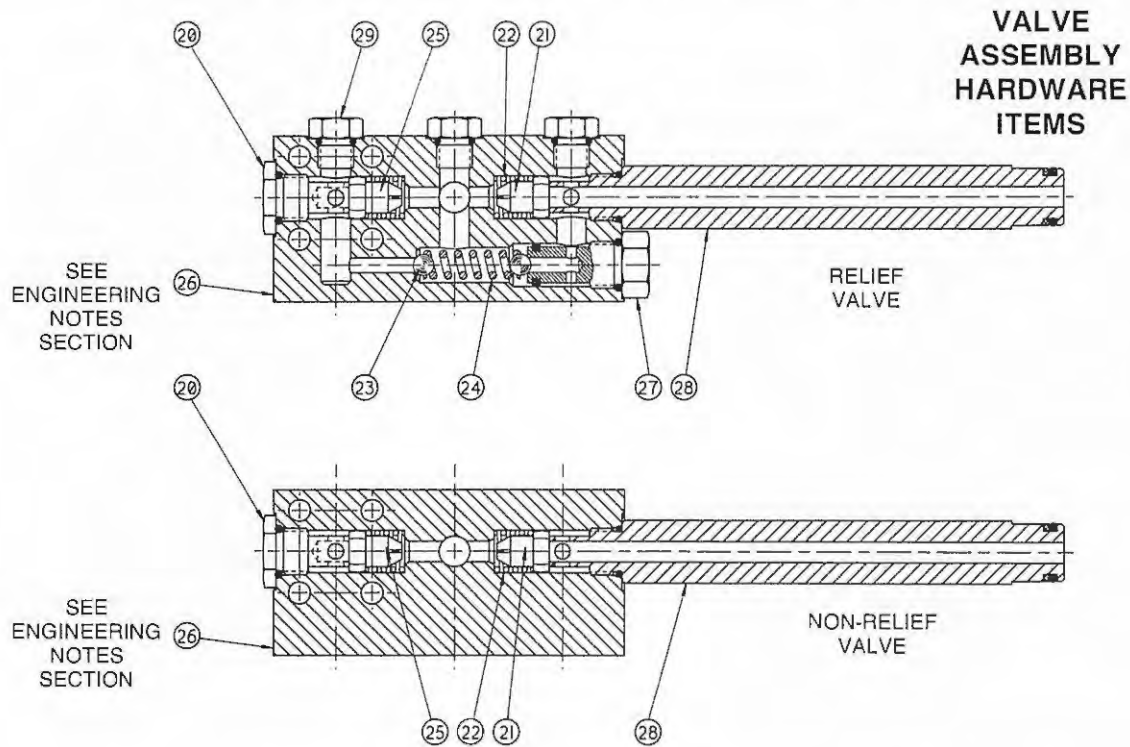
## HSSA HARDWARE PARTS LIST





# Anchor/Darling REPLACEMENT PARTS MANUAL

## HSSA HARDWARE PARTS LIST



## NF — M77 — MANIFOLD CONFIGURATION HARDWARE PARTS LIST

ITEM DESCRIPTION	ITEM DESCRIPTION	ITEM DESCRIPTION	ITEM DESCRIPTION
1 Mounting Flange	22 Poppet Spring	40 ¼" Tube Fitting	60 Rear Mounting Screw
2 Cap	23 Relief Valve Ball	41 45° Elbow	61 Tie Rod — Short
3 Piston Ring	24 Relief Valve Spring	42 Manifold Block	62 Front Mounting Screw
4 Piston Rod Nut	25 Poppet (Compression)	43 Poppet Spring Guide	63 Rear Mounting Lug
5 Piston	26 Flow Control Body	44 ½" Tube Fitting	64 Spring Guide
6 Piston Rod	27 Relief Valve Plug	45 ½" Tube	65 Indicator Plate
7 Cylinder Tube	28 Connector Tube	46 Tube Fitting	66 Reservoir Mtg. Screw
8 Head	29 SAE Port Plug	47 Reservoir Cap	67 Thrust Washer at Mounting Screw
9 Flush Plug-Port Plug	30 Relief Valve Seat	48 Reservoir Tube	68 Lock Washer at Mounting Screw
10 Gland	31 Manifold Tube Connector	49 Reservoir Piston	69 Mounting Foot Angle
11 Tie Rod Nut	32 ½" Tube Fitting @ Connector	50 Reservoir Spring	70 Gland Screw
12 Tie Rod	33 ½" Tube Fitting @ Connector	51 Tail Rod	71 Filter Plug
13 Name Plate	34 Front Manifold Block	52 Locknut	72 Filler Plug
14 Lock Pin	35 Rear Manifold Block	53 Protective Tube	73 Filler Plug Dust Seal
15 Drive Screw	36 Manifold Connector	54 Reservoir Head	74 Calibrated Valve
16 Front Retainer Flange	37 Manifold Mtg. Screw	55 Front Mounting Lug	75 Poppet Ungrooved
17 Rod Packing Washer	38 Lock Washer @ Manifold Mtg. Screw	56 Tie Rod Nut	76 Poppet Blanks
18 Support Angle	39 ¼" Tube Fitting	57 Tie Rod — Long	77 SF1154 Fluid
19 Support Angle Mtg. Screw	38A ¼" Tube	58 Rear Mounting Screw — Long	77 Warning Tag
20 Poppet Stop and Plug	39 ¼" Male Connector	59 Seal Screw	
21 Poppet (Extension)		59 Filler Plug — Fitting	



# Anchor/Darling REPLACEMENT PARTS MANUAL

## HSSA HARDWARE PARTS LIST

### ENGINEERING NOTES SECTION

1. When ordering Item #26, Flow Control Body, or Item #73, Calibrated Valve Subassembly, the item comes with four (4) mounting hole bushings (A/D Part No. 22124) and two (2) flat washers (A/D Part No. 22114). Items #26 and #73 come with mounting holes to accept 1/4 inch diameter mounting hardware. The inclusion of the bushings and washers make it possible to adapt the items to the manifold configuration cylinder which uses #10 - 32 cap screws to mount the valve. The sleeves and washers are not required for the flanged or extended tie rod cylinder configurations which use 1/4 - 28 cap screws. When rebuilding these two configuration cylinders, the sleeves and washers should be discarded. Consult with Anchor/Darling Engineering if questions arise regarding the use of these parts.

**ANCHOR/DARLING**  
32 Moulton Street  
Laconia, NH 03246  
TEL. (603) 528-1931 • FAX: (603) 528-6381



# Anchor/Darling

## REPLACEMENT PARTS MANUAL

### HSSA HARDWARE PARTS ITEM NUMBER LISTING

ITEM	DESCRIPTION	PAGE #	ITEM	DESCRIPTION	PAGE #
1	Mounting Flange	1, 2	63	Rear Mounting Lug	62 - 64
2	M/C Cap	2 - 4	64	Spring Guide (Bearing)	64, 65
3	Piston Ring	4, 5	65	Indicator Plate	65 - 67
4	Piston Rod Nut	5, 6	66	Reservoir Mtg. Screw	67, 68
5	M/C Piston	6, 7	70	Gland Screw	68, 69
6	Piston Rod	7 - 12	72	Filler Plug Dust Seal	69
7	M/C Cylinder Tube	12 - 15	73	Calibrated Valve	69, 70
8	M/C Head	16, 17	76	SF 1154 Fluid	70
9	Flush Plug — Port Plug	17	77	Warning Tag	70
10	Gland	18			
11	M/C Tie Rod Nut	19			
12	M/C Tie Rod	20 - 22			
13	Name Plate	22			
15	Drive Screw	23			
20	Poppet Stop	24			
21	Poppet (Extension)	24, 25			
22	Poppet Spring	25			
23	Relief Valve Ball	25			
24	Relief Valve Spring	26			
25	Poppet (Compression)	26, 27			
26	Flow Control Body	27			
27	Relief Valve Plug	28			
28	Connector Tube	28			
29	SAE Port Plug	29			
46	Reservoir Cap	31, 32			
47	Reservoir Tube	32 - 36			
48	Reservoir Piston	36 - 38			
49	Reservoir Spring	38, 39			
50	Tail Rod (Indicator)	40 - 45			
51	Reservoir Locknut	46			
52	Protective Tube	46 - 50			
53	Reservoir Head	51			
54	Front Mounting Lug	51, 52			
55	Reservoir Tie Rod Nut	52, 53			
56	Reservoir Tie Rod Long	53 - 55			
57	Reservoir Rear Mounting Screw (Long)	56			
58	Seal Screw	57			
59	Filler Plug (Fitting)	58			
60	Reservoir Rear Mtg. Screw (Short)	59			
61	Reservoir Tie Rod — Short	59 - 61			
62	Reservoir Front Mtg. Screw	61, 62			

### DISCONTINUED

ITEM	DESCRIPTION
14	Lock Pin
16	Front Retainer Flange
17	Rod Packing Washer
18	Support Angle
19	Support Angle Mtg. Screw
30	Relief Valve Seat
31	Manifold Tube Connector
32	1/2" Tube Fitting @ Connector
33	Front Manifold Block
34	Rear Manifold Block
35	Manifold Connector
36	Manifold Mtg. Screw
37	Lock Washer @ Man. Mtg. Screw
38	1/4" Tube Fitting
39	1/4" Male Connector
40	1/4" Tube Fitting — 45 Fitting
41	Manifold Block
42	Poppet Spring Guide
43	1/2" Tube Fitting
44	1/2" Tube
45	Tube Fitting
67	Thrust Washer @ Mounting Screw
68	Lock Washer @ Mtg. Screw
69	Mounting Foot Angle
71	Filter Plug
74	Poppet Ungrooved
75	Poppet Blanks



# Anchor/Darling REPLACEMENT PARTS MANUAL

## HSSA HARDWARE PARTS ALPHABETICAL LISTING

ITEM	DESCRIPTION	PAGE #	ITEM	DESCRIPTION	PAGE #
73	Calibrated Valve . . . . .	69, 70	55	Reservoir Tie Rod Nut . . . . .	52, 53
28	Connector Tube . . . . .	28	61	Reservoir Tie Rod — Short . . . . .	59 - 61
15	Drive Screw . . . . .	23	47	Reservoir Tube . . . . .	32 - 36
72	Filler Plug Dust Seal . . . . .	69	29	SAE Port Plug . . . . .	29
59	Filler Plug (Fitting) . . . . .	58	76	SF 1154 Fluid . . . . .	70
26	Flow Control Body . . . . .	27	58	Seal Screw . . . . .	57
9	Flush Plug — Port Plug . . . . .	17	64	Spring Guide (Bearing) . . . . .	64, 65
54	Front Mounting Lug . . . . .	51, 52	50	Tail Rod (Indicator) . . . . .	40 - 45
10	Gland . . . . .	18	77	Warning Tag . . . . .	70
70	Gland Screw . . . . .	68, 69			
65	Indicator Plate . . . . .	65 - 67			
2	M/C Cap . . . . .	2 - 4			
7	M/C Cylinder Tube . . . . .	12 - 15			
8	M/C Head . . . . .	16, 17			
5	M/C Piston . . . . .	6, 7			
12	M/C Tie Rod . . . . .	20 - 22			
11	M/C Tie Rod Nut . . . . .	19			
1	Mounting Flange . . . . .	1, 2			
13	Name Plate . . . . .	22			
3	Piston Ring . . . . .	4, 5			
6	Piston Rod . . . . .	7 - 12			
4	Piston Rod Nut . . . . .	5, 6			
25	Poppet (Compression) . . . . .	26, 27			
21	Poppet (Extension) . . . . .	24, 25			
22	Poppet Spring . . . . .	25			
20	Poppet Stop . . . . .	24			
52	Protective Tube . . . . .	46 - 50			
63	Rear Mounting Lug . . . . .	62 - 64			
23	Relief Valve Ball . . . . .	25			
27	Relief Valve Plug . . . . .	28			
24	Relief Valve Spring . . . . .	26			
46	Reservoir Cap . . . . .	31, 32			
62	Reservoir Front Mtg. Screw . . . . .	61, 62			
53	Reservoir Head . . . . .	51			
51	Reservoir Locknut . . . . .	46			
66	Reservoir Mtg. Screw . . . . .	67, 68			
48	Reservoir Piston . . . . .	36 - 38			
57	Reservoir Rear Mounting Screw (Long) . . . . .	56			
60	Reservoir Rear Mtg. Screw (Short) . . . . .	59			
49	Reservoir Spring . . . . .	38, 39			
56	Reservoir Tie Rod — Long . . . . .	53 - 55			

DISCONTINUED	
ITEM	DESCRIPTION
44	1/2" Tube
43	1/2" Tube Fitting
32	1/2" Tube Fitting @ Connector
39	1/4" Male Connector
38	1/4" Tube Fitting
40	1/4" Tube Fitting — 45 Fitting
71	Filter Plug
33	Front Manifold Block
16	Front Retainer Flange
14	Lock Pin
37	Lock Washer @ Man. Mtg. Screw
68	Lock Washer @ Mtg. Screw
41	Manifold Block
35	Manifold Connector
36	Manifold Mtg. Screw
31	Manifold Tube Connector
69	Mounting Foot Angle
75	Poppet Blanks
42	Poppet Spring Guide
74	Poppet Ungrooved
34	Rear Manifold Block
30	Relief Valve Seat
17	Rod Packing Washer
18	Support Angle
19	Support Angle Mtg. Screw
67	Thrust Washer @ Mtg. Screw
45	Tube Fitting



# Anchor/Darling REPLACEMENT PARTS MANUAL

## ITEM #1 MOUNTING FLANGE

BORE	CODE	DRAWING	INTERCHANGE REMARKS
1.50	NF	N/REQD.	
	M77	101-001	
	M	D31355	3000 PSI RELIEF N/A FROM STOCK C/F FOR DELIVERY
	M	D31355A	7000 PSI RELIEF N/A FROM STOCK C/F FOR DELIVERY
	E	N/REQD.	
2.50	NF	N/REQD.	
	M77	101-002	
	M	D31283	3000 PSI RELIEF N/A FROM STOCK C/F FOR DELIVERY
	M	D31283A	7000 PSI RELIEF N/A FROM STOCK C/F FOR DELIVERY
3.25	NF	N/REQD.	
	M77	101-003	
	M	C13669	3000 PSI RELIEF AND 7000 PSI RELIEF N/A FROM STOCK C/F FOR DELIVERY
	M	C13669A	N/A SUB. C13669 MOUNTING FLANGE N/A FROM STOCK C/F FOR DELIVERY
	E	N/REQD.	
4.00	NF	N/REQD.	
	M77	101-004	
	M	D31395	3000 PSI RELIEF AND 7000 PSI RELIEF N/A FROM STOCK C/F FOR DELIVERY
	M	D31395A	N/A SUB D31395 MOUNTING FLANGE N/A FROM STOCK C/F FOR DELIVERY
	E	N/REQD.	
5.00	NF	N/REQD.	
	M77	101-005	
	M	C13676	3000 PSI RELIEF N/A FROM STOCK C/F FOR DELIVERY
	M	C13676A	7000 PSI RELIEF N/A FROM STOCK C/F FOR DELIVERY
	E	N/REQD.	





# Anchor/Darling REPLACEMENT PARTS MANUAL

## ITEM #1 MOUNTING FLANGE (Continued)

BORE	CODE	DRAWING	INTERCHANGE REMARKS
6.00	NF	N/REQD.	
	M77	101-006	
	M	C13720	3000 PSI RELIEF N/A FROM STOCK C/F FOR DELIVERY
8.00	NF	N/REQD.	
	M77	101-007	
	M	C13850	3000 PSI RELIEF N/A FROM STOCK C/F FOR DELIVERY
	E	N/REQD.	
10.00	NF	N/REQD.	
	M77	101-008	
	M	C13791	3000 PSI RELIEF N/A FROM STOCK C/F FOR DELIVERY
	E	N/REQD.	

## ITEM #2 MAIN CYLINDER CAP

BORE	CODE	DRAWING	INTERCHANGE REMARKS
1.50	NF	102-001	
	M77	102-101	
	M	C13632	N/A SUB 102-101 MAIN CYLINDER CAP* A/R (2) 135-B9 AND (2) 135-B11 MOUNTING SCREWS
	E	B6504	N/A
2.50	NF	102-002	
	M77	102-102	
	M	306-40001-000	N/A SUB (1) 102-102 MAIN CYLINDER CAP* A/R (2) 135-B9 AND (2) 135-B11 MOUNTING SCREWS
	M	C13561	N/A SUB (1) 102-102 MAIN CLYLINDER CAP* A/R (1) 107-002 CYL TUBE + (1) 306-40000-000 HEAD + (2) 135-B9 AND (2) 135-B11 MOUNTING SCREWS
	E	B6121	NA
	E	B6127	N/A FOR HSMR-10 DESIGN

\*EXISTING FLOW CONTROL BODY AND RESERVOIR CAP MOUNTING HOLES MUST BE REWORKED TO .265 DIA. AND RESERVOIR CAP MOUNTING HOLES SPOT FACED .406 X .03 DEEP (1.50" BORE THRU 6.00" BORE) .500 X .03 DEEP (8.00 + 10.00 BORE).

DATA SUBJECT TO CHANGE WITHOUT NOTICE



# Anchor/Darling REPLACEMENT PARTS MANUAL

## ITEM #2 MAIN CYLINDER CAP (Continued)

BORE	CODE	DRAWING	INTERCHANGE REMARKS
3.25	NF	102-003	
	M77	102-103	
	M	306-40003-000	N/A SUB (1) 102-103 MAIN CYLINDER CAP* A/R (2) 135-B9 AND (2) 135-B11 MOUNTING SCREWS
	M	C13670	N/A SUB (1) 102-103 MAIN CYLINDER CAP* A/R (1) 107-003 CYLINDER TUBE + (1) 306-40002-000 HEAD + (2) 135-B9 AND (2) 135-B11 MOUNTING SCREWS
	E	B6124	N/A
	E	B6129	N/A FOR HSMR-20 DESIGN
	E	B6134	N/A FOR HSMR-20 DESIGN
4.00	NF	102-004	
	M77	102-104	
	M	306-40005-000	N/A SUB (1) 102-104 MAIN CYLINDER CAP* A/R (2) 135-B9 AND (2) 135-B11 MOUNTING SCREWS
	M	C13643	N/A SUB (1) 102-104 MAIN CYLINDER CAP* A/R (1) 107-004 CYLINDER TUBE + (1) 306-40004-000 HEAD + (2) 135-B9 AND (2) 135-B11 MOUNTING SCREWS
	E	B6122	N/A
	E	B6138	N/A FOR HSMR-30 DESIGN
5.00	NF	102-005	
	M77	102-105	
	M	306-40007-000	N/A SUB (1) 102-105 MAIN CYLINDER CAP* A/R (2) 135-B9 AND (2) 135-B11 MOUNTING SCREWS
	M	C13677	N/A SUB (1) 102-105 MAIN CYLINDER CAP* A/R (1) 107-005 CYLINDER TUBE + (1) 306-40006-000 HEAD + (2) 135-B9 AND (2) 135-B11 MOUNTING SCREWS
	E	B6513	N/A
6.00	NF	102-006	
	M77	102-106	
	M	306-40009-000	N/A SUB (1) 102-106 MAIN CYLINDER CAP* A/R (2) 135-B9 AND (2) 135-B11 MOUNTING SCREWS

\*EXISTING FLOW CONTROL BODY AND RESERVOIR CAP MOUNTING HOLES MUST BE REWORKED TO .265 DIA. AND RESERVOIR CAP MOUNTING HOLES SPOT FACED .406 X .03 DEEP (1.50" BORE THRU 6.00" BORE) .500 X .03 DEEP (8.00 + 10.00 BORE).  
DATA SUBJECT TO CHANGE WITHOUT NOTICE



# Anchor/Darling

## REPLACEMENT PARTS MANUAL

### ITEM #2 MAIN CYLINDER CAP (Continued)

BORE	CODE	DRAWING	INTERCHANGE REMARKS
6.00	M	C13721	N/A SUB (1) 102-106 MAIN CYLINDER CAP* A/R (1) 107-006 CYLINDER TUBE + (1) 306-40008-000 HEAD + (2) 135-B9 AND (2) 135-B11 MOUNTING SCREWS
	E	NOT MANUFD.	
8.00	NF	102-007	
	M77	102-107	
	M	B6840	N/A SUB (1) 102-107 MAIN CYLINDER CAP* A/R (2) 135-D13 AND (2) 135-D17 MOUNTING SCREWS
	E	B6648	N/A
10.00	NF	102-008	
	M77	102-108	
	M	B6821	N/A SUB (1) 102-108 MAIN CYLINDER CAP* A/R (2) 135-D13 AND (2) 135-D17 MOUNTING SCREWS
	E	B6562	N/A

### ITEM #3 PISTON RING

BORE	CODE	DRAWING	INTERCHANGE REMARKS
1.50	NF	118-001	
	M77	118-001	
	/	C5434-1	N/A SUB 118-001 PISTON RING
2.50	NF	118-002	
	M77	118-002	
	/	C5434-3	N/A SUB 118-002 PISTON RING
3.25	NF	118-003	
	M77	118-003	
	/	C5434-4	N/A SUB 118-003 PISTON RING
4.00	NF	118-004	
	M77	118-004	
	/	C5434-5	N/A SUB 118-004 PISTON RING
5.00	NF	118-005	
	M77	118-005	
	/	C5434-6	N/A SUB 118-005 PISTON RING

\*EXISTING FLOW CONTROL BODY AND RESERVOIR CAP MOUNTING HOLES MUST BE REWORKED TO .265 DIA. AND RESERVIOR CAP MOUNTING HOLES SPOT FACED .406 X .03 DEEP (1.50" BORE THRU 6.00" BORE) .500 X .03 DEEP (8.00 + 10.00 BORE).

DATA SUBJECT TO CHANGE WITHOUT NOTICE

### ITEM #3 PISTON RING (Continued)

BORE	CODE	DRAWING	INTERCHANGE REMARKS
6.00	NF	118-006	
	M77	118-006	
	M	C5434-7	N/A SUB 118-006 PISTON RING
	E	NOT MANUFD.	
8.00	NF	118-007	
	M77	118-007	
	/	C5434-9	N/A SUB 118-007 PISTON RING
10.00	NF	118-008	
	M77	118-008	
	/	C5434-20	N/A SUB 118-008 PISTON RING

### ITEM #4 PISTON ROD NUT

BORE	CODE	DRAWING	INTERCHANGE REMARKS
1.50	NF	116-003	
	M77	116-003	
	M	D23555-4	N/A SUB 296-1000-004 P/R NUT
	E	N/REQD.	
2.50	NF	116-006	
	M77	116-006	
	M	D23555-8	N/A SUB 296-1000-008 P/R NUT
	E	N/REQD.	
3.25	NF	116-008	
	M77	116-008	
	M	D23555-10	N/A SUB 296-1000-010 P/R NUT
	E	N/REQD.	
4.00	NF	116-009	
	M77	116-009	
	M	D23555-12	N/A SUB 296-1000-012 P/R NUT
	E	N/REQD.	
5.00	NF	116-010	
	M77	116-010	
	M	D23555-14	N/A SUB 296-1000-014 P/R NUT
	E	N/REQD.	
6.00	NF	116-012	
	M77	116-012	
	M	506-00103-000	
	E	N/REQD.	
8.00	NF	116-013	
	M77	116-013	
	M	506-00106-000	
	E	N/REQD.	



# Anchor/Darling

## REPLACEMENT PARTS MANUAL

### ITEM #4 PISTON ROD UNIT (Continued)

BORE	CODE	DRAWING	INTERCHANGE REMARKS
10.00	NF	N/REQD.	PISTON ASSEMBLES ONTO PISTON ROD
	M77	N/REQD.	PISTON ASSEMBLES ONTO PISTON ROD
	M	N/REQD.	PISTON ASSEMBLES ONTO PISTON ROD
	E	N/REQD.	PISTON ASSEMBLES ONTO PISTON ROD

### ITEM #5 PISTON

BORE	CODE	DRAWING	INTERCHANGE REMARKS
1.50	NF	302-1052-001	
	M77	302-1052-001	
	M	106-80200-000	N/A SUB (1) 302-1052-001-PISTON
	M	C7210B	N/A SUB (1) 302-1052-001 PISTON A/R (1) 106-001 SERIES P/R + (1) 116-003 P/R NUT
	E	C7210	N/A SUB (1) 302-1052-001 PISTON A/R (1) 106-001 SERIES P/R + (1) 116-003 P/R NUT
2.50	NF	302-1052-002	
	M77	302-1052-002	
	M	106-80200-002	N/A SUB (1) 302-1052-002 PISTON
	M	C7212L	N/A SUB (1) 302-1052-002 PISTON A/R (1) 106-004 SERIES P/R + (1) 116-006 P/R NUT
	E	C7212H	N/A SUB (1) 302-1052-002 PISTON A/R (1) 106-004 SERIES P/R + (1) 116-006 P/R NUT
3.25	NF	302-1052-003	
	M77	302-1052-003	
	M	106-80200-003	N/A SUB (1) 302-1052-003 PISTON
	M	C13671	N/A SUB (1) 302-1052-003 PISTON A/R (1) 106-007 SERIES P/R + (1) 116-008 P/R NUT
	E	C7213C	N/A SUB (1) 302-1052-003 PISTON A/R (1) 106-007 SERIES P/R + (1) 116-008 P/R NUT
	E	C7213G	N/A SUB (1) 302-1052-003 PISTON A/R (1) 106-007 SERIES P/R + (1) 116-008 P/R NUT

NOTE: ORIGINAL PISTON ROD DRAWING NUMBER MUST BE KNOWN FOR INTERCHANGE.

DATA SUBJECT TO CHANGE WITHOUT NOTICE

## ITEM #5 PISTON (Continued)

BORE	CODE	DRAWING	INTERCHANGE REMARKS
4.00	NF	302-1052-004	
	M77	302-1052-004	
	M	106-80200-004	N/A SUB (1) 302-1052-004 PISTON
	M	C7214E	N/A SUB (1) 302-1052-004 PISTON A/R (1) 106-010 SERIES P/R + (1) 116-009 P/R NUT
	E	C7214	N/A SUB (1) 302-1052-004 PISTON A/R (1) 106-010 SERIES P/R + (1) 116-009 P/R NUT
5.00	NF	302-1052-005	
	M77	302-1052-005	
	M	106-80200-005	N/A SUB (1) 302-1052-005 PISTON
	M	C13678	N/A SUB (1) 302-1052-005 PISTON A/R (1) 106-013 SERIES P/R + (1) 116-010 P/R NUT
	E	C7215	N/A SUB (1) 302-1052-005 PISTON A/R (1) 106-013 SERIES P/R + (1) 116-010 P/R NUT
6.00	NF	302-1052-006	
	M77	302-1052-006	
	M	106-80200-006	N/A SUB (1) 302-1052-006
	E	NOT MANUFD.	
8.00	NF	302-1052-007	
	M77	302-1052-007	
	M	106-80200-008	N/A SUB 302-1052-007 PISTON
	E	C7208H	N/A SUB (1) 302-1052-007 PISTON A/R (1) 106-010 SERIES P/R + (1) 106-013 P/R NUT
10.00	NF	302-1052-008	
	M77	302-1052-008	
	M	C7847G	
	E	C7847D	N/A SUB (1) C7847G PISTON A/R (1) 106-020 SERIES P/R + (1) D26642-4 LOCK PIN

NOTE: ORIGINAL PISTON ROD DRAWING MUST BE KNOWN FOR INTERCHANGE

## ITEM #6 PISTON ROD

BORE	CODE	DRAWING	INTERCHANGE REMARKS
1.50	NF	106-001	X 15.09 LG FOR 6.00 STK. 1.000" DIA. X 21.09 LG FOR 12.00 STK. 1.000" DIA. X 27.09 LG FOR 18.00 STK. 1.000" DIA.
	M77	106-001	X 15.09 LG FOR 6.00 STK. 1.000" DIA. X 21.09 LG FOR 12.00 STK. 1.000" DIA. X 27.09 LG FOR 18.00 STK. 1.000" DIA.
	M	106-40132-000	N/A SUB: 106-001 P/R X 15.09 LG FOR 6.00 STK. A/R (1) 116-003 P/R NUT

DATA SUBJECT TO CHANGE WITHOUT NOTICE



# Anchor/Darling

## REPLACEMENT PARTS MANUAL

### ITEM #6 PISTON ROD (Continued)

BORE	CODE	DRAWING	INTERCHANGE REMARKS
1.50	M	106-40132-000	N/A SUB: 106-001 P/R X 21.09 LG FOR 12.00 STK. A/R (1) 116-003 P/R NUT 106-001 P/R X 27.09 LG FOR 18.00 STK. A/R (1) 116-003 P/R NUT
	M	C13032B	N/A SUB: (1) 106-001 P/R X 15.09 LG 1.000" DIA. A/R (1) 104-001 PISTON + (1) 116-003 P/R NUT
	E	C13022	N/A SUB: (1) 106-001 P/R X 15.53 LG 1.000" DIA. A/R (1) 104-001 PISTON + (1) 116-003 P/R NUT
2.50	NF	106-004	X 16.11 LG FOR 6.00 STK. 1.375" DIA. X 22.11 LG FOR 12.00 STK. 1.375" DIA. X 28.11 LG FOR 18.00 STK. 1.375" DIA.
	M77	106-004	X 16.11 LG FOR 6.00 STK. 1.375" DIA. X 22.11 LG FOR 12.00 STK. 1.375" DIA. X 28.11 LG FOR 18.00 STK. 1.375" DIA.
	M	106-40133-000	N/A SUB: 106-004 P/R X 16.11 LG FOR 6.00 STK. A/R (1) 116-006 P/R NUT 106-004 P/R X 22.11 LG FOR 12.00 STK. A/R (1) 116-006 P/R NUT 106-004 P/R X 28.11 LG FOR 18.00 STK. A/R (1) 116-006 P/R NUT
	M	C11067D	N/A SUB: (1) 106-004 P/R X 16.11 LG 1.375" DIA. A/R (1) 104-002 PISTON + (1) 116-006 P/R NUT
	E	C11067	N/A SUB: (1) 106-004 P/R X 16.59 LG 1.375" DIA. A/R (1) 104-002 PISTON + (1) 116-006 P/R NUT
	E	C11067A	N/A SUB: (1) 106-004 P/R X 22.59 LG 1.375" DIA. A/R (1) 104-002 PISTON + (1) 116-006 P/R NUT
	E	C11067B	N/A SUB: (1) 106-004 P/R X 16.59 LG 1.375" DIA. A/R (1) 104-002 PISTON + (1) 116-006 P/R NUT
	E	C11067C	N/A SUB: (1) 106-004 P/R X 28.59 LG 1.375" DIA. A/R (1) 104-002 PISTON + (1) 116-006 P/R NUT

DATA SUBJECT TO CHANGE WITHOUT NOTICE



# Anchor/Darling REPLACEMENT PARTS MANUAL

## ITEM #6 PISTON ROD (Continued)

BORE	CODE	DRAWING	INTERCHANGE REMARKS
2.50	E	C11075	N/A SUB: (1) 106-004 P/R X 12.72 LG 1.375" DIA. A/R (1) 104-002 PISTON + (1) 116-006 P/R NUT
	M	C11067E	N/A SUB: (1) 106-004 P/R X 28.11 LG 1.375" DIA. A/R (1) 104-002 PISTON + (1) 116-006 P/R NUT
3.25	NF	106-007	X 17.33 LG FOR 6.00 STK. 1.750" DIA. X 23.33 LG FOR 12.00 STK. 1.750" DIA. X 29.33 LG FOR 18.00 STK. 1.750" DIA.
	M77	106-007	X 17.33 LG FOR 6.00 STK. 1.750" DIA. X 23.33 LG FOR 12.00 STK. 1.750" DIA. X 29.33 LG FOR 18.00 STK. 1.750" DIA.
	M	106-40134-000	N/A SUB: 106-007 P/R X 17.33 LG FOR 6.00 STK. A/R (1) 116-008 P/R NUT 106-007 P/R X 23.33 LG FOR 12.00 STK. A/R (1) 116-008 P/R NUT 106-007 P/R X 29.33 LG FOR 18.00 STK. A/R (1) 116-008 P/R NUT
	M	C13672	N/A SUB: (1) 106-007 P/R X 17.33 LG 1.750" DIA. A/R (1) 104-003 PISTON + (1) 116-008 P/R NUT
	E	C11068	N/A SUB: (1) 106-007 P/R X 17.59 LG 1.750" DIA. A/R (1) 104-003 PISTON + (1) 116-008 P/R NUT
	E	C11068A	N/A SUB: (1) 106-007 P/R X 23.59 LG 1.750" DIA. A/R (1) 104-003 PISTON + (1) 116-008 P/R NUT
	E	C11068B	N/A SUB: (1) 106-007 P/R X 29.59 LG 1.750" DIA. A/R (1) 104-003 PISTON + (1) 116-008 P/R NUT
	E	C11076	N/A SUB: (1) 106-007 P/R X 13.72 LG 1.750" DIA. A/R (1) 104-003 PISTON + (1) 116-008 P/R NUT

DATA SUBJECT TO CHANGE WITHOUT NOTICE





# Anchor/Darling

## REPLACEMENT PARTS MANUAL

### ITEM #6 PISTON ROD (Continued)

BORE	CODE	DRAWING	INTERCHANGE REMARKS
4.00	NF	106-010	X 17.97 LG FOR 6.00 STK. 2.000" DIA. X 23.97 LG FOR 12.00 STK. 2.000" DIA. X 29.97 LG FOR 18.00 STK. 2.000" DIA.
	M77	106-010	X 17.97 LG FOR 6.00 STK. 2.000" DIA. X 23.97 LG FOR 12.00 STK. 2.000" DIA. X 29.97 LG FOR 18.00 STK. 2.000" DIA.
	M	106-40135-000	N/A SUB: 106-010 P/R 17.97 LG FOR 6.00 STK. A/R (1) 116-009 P/R NUT 106-010 P/R X 23.97 LG FOR 12.00 STK. A/R (1) 116-009 P/R NUT 106-010 P/R X 29.97 LG FOR 18.00 STK. A/R (1) 116-009 P/R NUT
	M	C11069B	N/A SUB: (1) 106-010 P/R X 17.97 LG 2.000" DIA. A/R (1) 104-004 PISTON + (1) 116-009 P/R NUT
	E	C11069	N/A SUB: (1) 106-010 P/R X 18.22 LG 2.000" DIA. A/R (1) 104-004 PISTON + (1) 116-009 P/R NUT
	E	C11069A	N/A SUB: (1) 106-010 P/R X 24.22 LG 2.000" DIA. A/R (1) 104-004 PISTON + (1) 116-009 P/R NUT
	M	C11069C	N/A SUB: (1) 106-010 P/R X 23.97 LG 2.000" DIA. A/R (1) 104-004 PISTON + (1) 116-009 P/R NUT
	E	C11078	N/A SUB: (1) 106-010 P/R X 14.47 LG 2.000" DIA. A/R (1) 104-004 PISTON + (1) 116-009 P/R NUT
	5.00	NF	106-013
M77		106-013	X 19.22 LG FOR 6.00 STK. 2.500" DIA. X 25.22 LG FOR 12.00 STK. 2.500" DIA. X 31.22 LG FOR 18.00 STK. 2.500" DIA.
M		106-40136-000	N/A SUB: 106-013 P/R X 19.22 LG FOR 6.00 STK. A/R (1) 116-010 P/R NUT 106-013 P/R X 25.22 LG FOR 12.00 STK. A/R (1) 116-010 P/R NUT 106-013 P/R X 31.22 LG FOR 18.00 STK. A/R (1) 116-010 P/R NUT

DATA SUBJECT TO CHANGE WITHOUT NOTICE



# Anchor/Darling REPLACEMENT PARTS MANUAL

## ITEM #6 PISTON ROD (Continued)

BORE	CODE	DRAWING	INTERCHANGE REMARKS
5.00	M	C13679	N/A SUB: (1) 106-013 P/R X 19.22 LG 2.500" DIA. A/R (1) 104-005 PISTON + (1) 116-010 P/R NUT
	E	C13011	N/A SUB: (1) 106-013 P/R X 19.56 LG 2.500" DIA. A/R (1) 104-005 PISTON + (1) 116-010 P/R NUT
6.00	NF	106-016	X 20.72 LG FOR 6.00 STK. 3.000" DIA. X 26.72 LG FOR 12.00 STK. 3.000" DIA. X 32.72 LG FOR 18.00 STK. 3.000" DIA.
	M77	106-017	X 20.72 LG FOR 6.00 STK. 3.000" DIA. X 26.72 LG FOR 12.00 STK. 3.000" DIA. X 32.72 LG FOR 18.00 STK. 3.000" DIA.
	M	106-40137-000	N/A SUB: 106-016 P/R X 20.72 LG FOR 6.00 STK. A/R (1) 116-012 P/R NUT 106-016 P/R X 26.72 LG FOR 12.00 STK. A/R (1) 116-012 P/R NUT 106-016 P/R X 32.72 LG FOR 18.00 STK. A/R (1) 116-012 P/R NUT
	M	C13723	N/A SUB: (1) 106-016 P/R X 20.72 LG 3.000" DIA. AND (1) 104-006 PISTON A/R (1) 116-012 P/R NUT
	E	NOT MANUFD.	
	E		
8.00	NF	106-019	X 21.66 LG FOR 6.00 STK. 3.500" DIA. X 27.66 LG FOR 12.00 STK. 3.500" DIA. X 33.66 LG FOR 18.00 STK. 3.500" DIA.
	M77	106-019	X 21.66 LG FOR 6.00 STK. 3.500" DIA. X 27.66 LG FOR 12.00 STK. 3.500" DIA. X 33.66 LG FOR 18.00 STK. 3.500" DIA.
	M	106-40138-000	N/A SUB: 106-019 P/R X 21.66 LG FOR 6.00 STK. A/R (1) 116-013 P/R NUT 106-019 P/R X 27.66 LG FOR 12.00 STK. A/R (1) 116-013 P/R NUT 106-019 P/R X 33.66 LG FOR 18.00 STK. A/R (1) 116-013 P/R NUT
	E	C13444	N/A SUB: (1) 106-019 P/R X 22.09 LG 3.500" DIA. A/R (1) 104-007 PISTON + (1) 116-013 P/R NUT
	E		

DATA SUBJECT TO CHANGE WITHOUT NOTICE



# Anchor/Darling

## REPLACEMENT PARTS MANUAL

### ITEM #6 PISTON ROD (Continued)

BORE	CODE	DRAWING	INTERCHANGE REMARKS
8.00	M	C13852	N/A SUB: (1) 106-019 P/R X 21.66 LG 3.500" DIA. A/R (1) 104-007 PISTON + (1) 116-013 P/R NUT
10.00	NF	106-020	X 25.37 LG FOR 6.00 STK. 5.000" DIA. X 31.37 LG FOR 12.00 STK. 5.000" DIA. X 37.37 LG FOR 18.00 STK. 5.000" DIA.
	M77	106-020	X 25.37 LG FOR 6.00 STK. 5.000" DIA. X 31.37 LG FOR 12.00 STK. 5.000" DIA. X 37.37 LG FOR 18.00 STK. 5.000" DIA.
	M	C13792	N/A SUB: 106-020 P/R X 25.37 LG FOR 6.00 STK. 5.000" DIA. 106-020 P/R X 31.37 LG FOR 12.00 STK. 5.000" DIA. 106-020 P/R X 37.37 LG FOR 18.00 STK. 5.000" DIA.
	E	C13113	N/A SUB: (1) 106-020 P/R X 26.07 LG 5.000" DIA. A/R (1) 104-008 PISTON

### ITEM #7 CYLINDER TUBE

BORE	CODE	DRAWING	INTERCHANGE REMARKS
1.50	NF	107-001	X 7.75 LG FOR 6.00 STK. X 13.75 LG FOR 12.00 STK. X 19.75 LG FOR 18.00 STK.
	M77	107-001	X 7.75 LG FOR 6.00 STK. X 13.75 LG FOR 12.00 STK. X 19.75 LG FOR 18.00 STK.
	M	106-40231-000	N/A SUB: 107-001 CYL. TUBE X 7.75 LG FOR 6.00 STK. 107-001 CYL. TUBE X 13.75 LG FOR 12.00 STK. 107-001 CYL. TUBE X 19.75 LG FOR 18.00 STK.
	M	D23487R	N/A SUB: 107-001 CYL. TUBE X 7.75 LG 107-001 CYL. TUBE X 13.75 LG 107-001 CYL. TUBE X 19.75 LG
	E	D23487	N/A SUB: 107-001 CYL. TUBE X 7.88 LG 107-001 CYL. TUBE X 13.88 LG 107-001 CYL. TUBE X 19.88 LG



# Anchor/Darling REPLACEMENT PARTS MANUAL

## ITEM #7 CYLINDER TUBE (Continued)

BORE	CODE	DRAWING	INTERCHANGE REMARKS
1.50	E	D23487M	N/A SUB: 107-001 CYL. TUBE X 7.88 LG 107-001 CYL. TUBE X 13.88 LG 107-001 CYL. TUBE X 19.88 LG
2.50	NF	107-002	X 8.00 LG FOR 6.00 STK. X 14.00 LG FOR 12.00 STK. X 20.00 LG FOR 18.00 STK.
	M77	107-002	X 8.00 LG FOR 6.00 STK. X 14.00 LG FOR 12.00 STK. X 20.00 LG FOR 18.00 STK.
	M	106-40231-002	N/A SUB: 107-002 CYL. TUBE X 8.00 LG FOR 6.00 STK. 107-002 CYL. TUBE X 14.00 LG FOR 12.00 STK. 107-002 CYL. TUBE X 20.00 LG FOR 18.00 STK.
	/	D30715B	N/A SUB: 107-002 CYL. TUBE X 7.94 LG FOR 6.00 STK. 107-002 CYL. TUBE X 13.94 LG FOR 12.00 STK. 107-002 CYL. TUBE X 19.94 LG FOR 18.00 STK.
	E	D23489X	N/A SUB: 107-002 CYL. TUBE X 7.94 LG
	E	D30715	N/A SUB: 107-002 CYL. TUBE X 8.06 LG FOR 6.00 STK. 107-002 CYL. TUBE X 14.06 LG FOR 12.00 STK. 107-002 CYL. TUBE X 20.06 LG FOR 18.00 STK.
3.25	NF	107-003	X 8.25 LG FOR 6.00 STK. X 14.25 LG FOR 12.00 STK. X 20.25 LG FOR 18.00 STK.
	M77	107-003	X 8.25 LG FOR 6.00 STK. X 14.25 LG FOR 12.00 STK. X 20.25 LG FOR 18.00 STK.
	M	106-40231-003	N/A SUB: 107-003 CYL. TUBE X 8.25 LG FOR 6.00 STK. 107-003 CYL. TUBE X 14.25 LG FOR 12.00 STK. 107-003 CYL. TUBE X 20.25 LG FOR 18.00 STK.
	/	D30797A	N/A SUB: 107-003 CYL. TUBE X 8.19 LG FOR 6.00 STK. 107-003 CYL. TUBE X 14.19 LG FOR 12.00 STK. 107-003 CYL. TUBE X 20.19 LG FOR 18.00 STK.
	E	D2349P	N/A SUB: 107-003 CYL. TUBE X 8.19 LG FOR 6.00 STK. 107-003 CYL. TUBE X 14.19 LG FOR 12.00 STK. 107-003 CYL. TUBE X 20.19 LG FOR 18.00 STK.

DATA SUBJECT TO CHANGE WITHOUT NOTICE



# Anchor/Darling

## REPLACEMENT PARTS MANUAL

### ITEM #7 CYLINDER TUBE (Continued)

BORE	CODE	DRAWING	INTERCHANGE REMARKS
3.25	E	D30797D	N/A SUB: 107-003 CYL. TUBE X 8.19 LG FOR 6.00 STK. 107-003 CYL. TUBE X 14.19 LG FOR 12.00 STK. 107-003 CYL. TUBE X 20.19 LG FOR 18.00 STK.
4.00	NF	107-004	X 8.50 LG FOR 6.00 STK. X 14.50 LG FOR 12.00 STK. X 20.50 LG FOR 18.00 STK.
	M77	107-004	X 8.50 LG FOR 6.00 STK. X 14.50 LG FOR 12.00 STK. X 20.50 LG FOR 18.00 STK.
	M	106-40231-004	N/A SUB: 107-004 CYL. TUBE X 8.50 LG FOR 6.00 STK. 107-004 CYL. TUBE X 14.50 LG FOR 12.00 STK. 107-004 CYL. TUBE X 20.50 LG FOR 18.00 STK.
	/	D23491Y	N/A SUB: 107-004 CYL. TUBE X 8.44 LG FOR 6.00 STK. 107-004 CYL. TUBE X 14.44 LG FOR 12.00 STK. 107-004 CYL. TUBE X 20.44 LG FOR 18.00 STK.
	E	D23491	N/A SUB: 107-004 CYL. TUBE X 8.44 LG FOR 6.00 STK. 107-004 CYL. TUBE X 14.44 LG FOR 12.00 STK. 107-004 CYL. TUBE X 20.44 LG FOR 18.00 STK.
5.00	NF	107-005	X 9.00 LG FOR 6.00 STK. X 15.00 LG FOR 12.00 STK. X 21.00 LG FOR 18.00 STK.
	M77	107-005	X 9.00 LG FOR 6.00 STK. X 15.00 LG FOR 12.00 STK. X 21.00 LG FOR 18.00 STK.
	M	106-40231-005	N/A SUB: 107-005 CYL. TUBE X 9.00 LG FOR 6.00 STK. 107-005 CYL. TUBE X 15.00 LG FOR 12.00 STK. 107-005 CYL. TUBE X 21.00 LG FOR 18.00 STK.
	/	D23492T	N/A SUB: 107-005 CYL. TUBE X 8.94 LG FOR 6.00 STK. 107-005 CYL. TUBE X 14.94 LG FOR 12.00 STK. 107-005 CYL. TUBE X 20.94 LG FOR 18.00 STK.
6.00	NF	107-006	X 9.38 LG FOR 6.00 STK. X 15.38 LG FOR 12.00 STK. X 21.38 LG FOR 18.00 STK.
	M77	107-006	X 9.38 LG FOR 6.00 STK. X 15.38 LG FOR 12.00 STK. X 21.38 LG FOR 18.00 STK.

DATA SUBJECT TO CHANGE WITHOUT NOTICE



# Anchor/Darling REPLACEMENT PARTS MANUAL

## ITEM #7 CYLINDER TUBE (Continued)

BORE	CODE	DRAWING	INTERCHANGE REMARKS
6.00	M	106-40231-006	N/A SUB: 107-006 CYL. TUBE X 9.38 LG FOR 6.00 STK. 107-006 CYL. TUBE X 15.38 LG FOR 12.00 STK. 107-006 CYL. TUBE X 21.38 LG FOR 18.00 STK.
	M	D31555	N/A SUB: 107-006 CYL. TUBE X 9.31 <sup>*</sup> LG FOR 6.00 STK. 107-006 CYL. TUBE X 15.31 LG FOR 12.00 STK. 107-006 CYL. TUBE X 21.31 LG FOR 18.00 STK.
	E	NOT MANUFD.	
8.00	NF	107-007	X 10.00 LG FOR 6.00 STK. X 16.00 LG FOR 12.00 STK. X 22.00 LG FOR 18.00 STK.
	M77	107-007	X 10.00 LG FOR 6.00 STK. X 16.00 LG FOR 12.00 STK. X 22.00 LG FOR 18.00 STK.
	M	106-40231-008	N/A SUB: 107-007 CYL. TUBE X 10.00 LG FOR 6.00 STK. 107-007 CYL. TUBE X 16.00 LG FOR 12.00 STK. 107-007 CYL. TUBE X 22.00 LG FOR 18.00 STK.
	M	D234955	N/A SUB: 107-007 CYL. TUBE X 9.94 LG FOR 6.00 STK. 107-007 CYL. TUBE X 15.94 LG FOR 12.00 STK. 107-007 CYL. TUBE X 21.94 LG FOR 18.00 STK.
	E	D23495Q	N/A SUB: 107-007 CYL. TUBE X 9.94 LG FOR 6.00 STK. 107-007 CYL. TUBE X 15.94 LG FOR 12.00 STK. 107-007 CYL. TUBE X 21.94 LG FOR 18.00 STK.
10.00	NF	107-008	X 12.00 LG FOR 6.00 STK. X 18.00 LG FOR 12.00 STK. X 24.00 LG FOR 18.00 STK.
	M77	107-008	X 12.00 LG FOR 6.00 STK. X 18.00 LG FOR 12.00 STK. X 24.00 LG FOR 18.00 STK.
	M	106-00144-001	N/A SUB: 107-008 CYL. TUBE X 12.00 LG FOR 6.00 STK. 107-008 CYL. TUBE X 18.00 LG FOR 12.00 STK. 107-008 CYL. TUBE X 24.00 LG FOR 18.00 STK.
	M	D26282G	N/A SUB: 107-008 CYL. TUBE X 12.00 LG FOR 6.00 STK. 107-008 CYL. TUBE X 18.00 LG FOR 12.00 STK. 107-008 CYL. TUBE X 24.00 LG FOR 18.00 STK.
	E	D26282K	N/A SUB: 107-008 CYL. TUBE X 11.62 LG FOR 6.00 STK. 107-008 CYL. TUBE X 17.62 LG FOR 12.00 STK. 107-008 CYL. TUBE X 23.62 LG FOR 18.00 STK.

DATA SUBJECT TO CHANGE WITHOUT NOTICE



# Anchor/Darling

## REPLACEMENT PARTS MANUAL

### ITEM #8 HEAD

BORE	CODE	DRAWING	INTERCHANGE REMARKS
1.50	NF	103-001	
	M77	103-001	
	M	C13633	
	E	C11388	
2.50	NF	103-002	
	M77	103-002	
	M	306-40000-000	
	M	C13562	N/A SUB: (1) 306-40000-000 MAIN CYL. HEAD A/R (1) 107-002 SERIES CYL. TUBE + (1) 115-001 PORT PLUG + (1) 102-102 MAIN CYL. CAP*
	E	B6120	N/A
	E	B6128	N/A FOR HSMR-10 DESIGN
3.25	NF	103-003	
	M77	103-003	
	M	306-40002-000	
	M	C13673	N/A SUB: (1) 306-40002-000 MAIN CYL. HEAD A/R (1) 107-003 SERIES CYL. TUBE + (1) 102-103 MAIN CYL. CAP* + (1) 115-001 PORT PLUG
	E	B6125	N/A
	E	B6133	N/A
4.00	NF	103-004	
	M77	103-004	
	M	306-40004-000	
	M	C13642	N/A SUB: (1) 306-40004-000 MAIN CYL. HEAD A/R (1) 107-004 SERIES CYL. TUBE + (1) 102-104 MAIN CYL. CAP* + (1) 115-001 PORT PLUG
	E	B6123	N/A
	E	B6139	N/A FOR HSMR-30 DESIGN
5.00	NF	103-005	
	M77	103-005	
	M	306-40006-000	

\*EXISTING FLOW CONTROL BODY AND RESERVOIR CAP MOUNTING HOLES MUST BE REWORKED TO .265 DIA. AND RESERVOIR CAP MOUNTING HOLES SPOT FACED .406 X .03 DEEP (1.50" BORE THRU 6.00" BORE) .500 X .03 DEEP (8.00 + 10.00 BORE).  
DATA SUBJECT TO CHANGE WITHOUT NOTICE



# Anchor/Darling REPLACEMENT PARTS MANUAL

## ITEM #8 HEAD (Continued)

BORE	CODE	DRAWING	INTERCHANGE REMARKS
5.00	M	C13680	N/A SUB: (1) 306-40006-000 MAIN CYL. HEAD A/R (1) 107-005 SERIES CYL. TUBE + (1) 102-105 MAIN CYL. CAP* + (1) 115-001 PORT PLUG
	E	C13017	N/A
6.00	NF	103-006	
	M77	103-006	
	M	306-40008-000	
	M	C13724	N/A SUB: (1) 306-40008-000 MAIN CYL. HEAD A/R (1) 107-006 SERIES CYL. TUBE + (1) 102-106 MAIN CYL. CAP* + (1) 115-001
	E	NOT MANUFD.	
8.00	NF	103A-001	
	M77	103A-001	
	M	B6841	
	E	B6646	N/A
10.00	NF	103A-002	
	M77	103A-002	
	M	B6822	
	E	B6559	N/A

\*EXISTING FLOW CONTROL BODY AND RESERVOIR CAP MOUNTING HOLES MUST BE REWORKED TO .265 DIA. AND RESERVOIR CAP MOUNTING HOLES SPOT FACED .406 X .03 DEEP (1.50" BORE THRU 6.00" BORE) .500 X .03 DEEP (8.00 + 10.00 BORE).

## ITEM #9 FLUSH PLUG (PORT PLUG)

BORE	CODE	DRAWING	INTERCHANGE REMARKS
1.50 thru 6.00	NF	115-001	
	M77	115-001	
	M	D25720-3	
	M	115-001	
	E	NOT REQ'D.	
8.00 & 10.00	NF	115-002	
	M77	115-002	
	M	D25720-4	
	M	115-002	
	E	NOT REQ'D.	





# Anchor/Darling REPLACEMENT PARTS MANUAL

## ITEM #10 GLAND

BORE	CODE	DRAWING	INTERCHANGE REMARKS
1.50	NF	105-001	
	M77	105-001	
	M	C13637	
	E	C14202F	N/A
2.50	NF	105-002	
	M77	105-002	
	M	C13560	
	E	D29822	N/A
3.25	NF	105-003	
	M77	105-003	
	M	C13675	
	E	D29823	N/A
4.00	NF	105-004	
	M77	105-004	
	M	C13645	
	E	D29824	N/A
5.00	NF	105-005	
	M77	105-005	
	M	C13682	
	E	C13013	N/A
6.00	NF	105-006	
	M77	105-006	
	M	C13726	
	E	NOT MANUFD.	
8.00	NF	105-007	
	M77	105-007	
	M	C13854	
	E	C14220A	N/A
10.00	NF	105-008	
	M77	105-008	
	M	B6824	
	E	C13121	N/A

DATA SUBJECT TO CHANGE WITHOUT NOTICE

## ITEM #11 TIE ROD NUT

BORE	CODE	DRAWING	INTERCHANGE REMARKS
1.50	NF	116-002	
	M77	116-002	
	M	D23555-3	N/A SUB 296-1000-003 T/R NUT
	E	D26261-4	50 PC MINIMUM ORDER QUANTITY N/A FROM STOCK C/F FOR DELIVERY
2.50	NF	116-004	
	M77	116-004	
	/	D23555-5	N/A SUB 296-1000-005 T/R NUT
	E	D26261-6	50 PC MINIMUM ORDER QUANTITY N/A FROM STOCK C/F FOR DELIVERY
3.25	NF	116-005	
	M77	116-005	
	/	D23555-7	N/A SUB 296-1000-007 T/R NUT
	E	D26261-7	50 PC MINIMUM ORDER QUANTITY N/A FROM STOCK C/F FOR DELIVERY
4.00	NF	116-005	
	M77	116-005	
	/	D23555-7	N/A SUB 296-1000-007 T/R NUT
	E	D26261-7	50 PC MINIMUM ORDER QUANTITY N/A FROM STOCK C/F FOR DELIVERY
5.00	NF	116-007	
	M77	116-007	
	M	D23555-9	N/A SUB 296-1000-009 T/R NUT
	E	D26261-9	25 PC MINIMUM ORDER QUANTITY N/A FROM STOCK C/F FOR DELIVERY
6.00	NF	116-008	
	M77	116-008	
	M	D23555-10	N/A SUB 296-1000-010 T/R NUT
	E	NOT MANUFD.	
8.00	NF	116-009	
	M77	116-009	
	M	D23555-12	N/A SUB 296-1000-012 T/R NUT
	E	D26261-7	25 PC MINIMUM ORDER QUANTITY N/A FROM STOCK C/F FOR DELIVERY
10.00	NF	116-011	
	M77	116-011	
	M	D23555-15	N/A SUB 296-1000-015 T/R NUT
	E	D26261-10	25 PC MINIMUM ORDER QUANTITY N/A FROM STOCK C/F FOR DELIVERY

DATA SUBJECT TO CHANGE WITHOUT NOTICE



# Anchor/Darling

## REPLACEMENT PARTS MANUAL

### ITEM #12 MAIN CYLINDER TIE ROD

BORE	CODE	DRAWING	INTERCHANGE REMARKS
1.50	NF	108-001	X 12.72 LG FOR 6.00 STK. .375 DIA. X 18.72 LG FOR 12.00 STK. .375 DIA. X 24.72 LG FOR 18.00 STK. .375 DIA.
	M77	108-101	X 12.25 LG FOR 6.00 STK. .375 DIA. X 18.25 LG FOR 12.00 STK. .375 DIA. X 24.25 LG FOR 18.00 STK. .375 DIA.
	M	202-1059-001*	X 12.70 LG FOR 6.00 STK. .375 DIA. X 18.70 LG FOR 12.00 STK. .375 DIA. X 24.70 LG FOR 18.00 STK. .375 DIA.
	M	D31375	N/A SUB 202-1059-001 T/R*
	E	D23772H	N/A SUB 202-1059-001 T/R* X 11.19 LG .375 DIA.
2.50	NF	108-002	X 13.31 LG FOR 6.00 STK. .500 DIA. X 19.31 LG FOR 12.00 STK. .500 DIA. X 25.31 LG FOR 18.00 STK. .500 DIA.
	M77	108-102	X 12.62 LG FOR 6.00 STK. .500 DIA. X 18.62 LG FOR 12.00 STK. .500 DIA. X 24.62 LG FOR 18.00 STK. .500 DIA.
	M	202-1059-002*	X 13.16 LG FOR 6.00 STK. .500 DIA. X 19.16 LG FOR 12.00 STK. .500 DIA. X 25.16 LG FOR 18.00 STK. .500 DIA.
	M	D31284	N/A SUB 202-1059-002 T/R* .500 DIA.
	E	D23773U	N/A SUB 202-1059-002 T/R* X 11.50 LG FOR 6.00 STK. .500 DIA.
	E	D23773V	N/A SUB 202-1059-002 T/R* X 17.50 LG FOR 12.00 STK. .500 DIA.
	E	D23773Y	N/A SUB 202-1059-002 T/R* X 23.50 LG FOR 18.00 STK. .500 DIA.
	E	D29854	N/A SUB 202-1059-002 T/R* X 11.12 LG FOR 6.00 STK. .500 DIA. FOR HSMR-10 DESIGN
3.25	NF	108-003	X 14.03 LG FOR 6.00 STK. .625 DIA. X 20.03 LG FOR 12.00 STK. .625 DIA. X 26.03 LG FOR 18.00 STK. .625 DIA.
	M77	108-103	X 13.12 LG FOR 6.00 STK. .625 DIA. X 19.12 LG FOR 12.00 STK. .625 DIA. X 25.12 LG FOR 18.00 STK. .625 DIA.
	M	202-1059-003*	X 13.75 LG FOR 6.00 STK. .625 DIA. X 19.75 LG FOR 12.00 STK. .625 DIA. X 25.75 LG FOR 18.00 STK. .625 DIA.
	M	D31500	N/A SUB 202-1059-003 T/R* .625 DIA.
	E	D29829	N/A SUB 202-1059-003 T/R* X 12.50 LG FOR 6.00 STK. .625 DIA.
	E	D29829D	N/A SUB 202-1059-003 T/R* X 18.50 LG FOR 12.00 STK. .625 DIA.

\*N/A FROM STOCK • C/F FOR DELIVERY • DATA SUBJECT TO CHANGE WITHOUT NOTICE

## ITEM #12 MAIN CYLINDER TIE ROD (Continued)

BORE	CODE	DRAWING	INTERCHANGE REMARKS
3.25	E	D29829G	N/A SUB 202-1059-003 *T/R X 24.50 LG FOR 18.00 STK. .625 DIA.
	E	D29829H	N/A
	E	D29860	N/A SUB 202-1059-003 *T/R X 12.12 LG FOR 6.00 STK. .625 DIA.
4.00	NF	108-004	X 14.53 LG FOR 6.00 STK. .625 DIA. X 20.53 LG FOR 12.00 STK. .625 DIA. X 26.53 LG FOR 18.00 STK. .625 DIA.
	M77	108-104	X 13.50 LG FOR 6.00 STK. .625 DIA. X 19.50 LG FOR 18.00 STK. .625 DIA. X 25.50 LG FOR 18.00 STK. .625 DIA.
	M	202-1059-004*	X 14.12 LG FOR 6.00 STK. .625 DIA. X 20.12 LG FOR 12.00 STK. .625 DIA. X 26.12 LG FOR 18.00 STK. .625 DIA.
	M	D31394	N/A SUB 202-1059-004 *T/R .625 DIA.
	M	D31394A	N/A SUB 202-1059-004 *T/R .625 DIA. X 20.12 LG FOR 12.00 STK. .625 DIA.
	M	D31394B	N/A SUB 202-1059-004 *T/R X 14.12 LG FOR 6.00 STK. .625 DIA.
	E	D29829A	N/A SUB 202-1059-004 *T/R X 12.88 LG FOR 6.00 STK. .625 DIA.
	E	D29829C	N/A SUB 202-1059-004 *T/R X 18.88 LG FOR 12.00 STK. .625 DIA.
	E	D29867	N/A SUB 202-1059-004 *T/R X 12.50 LG FOR 6.00 STK. .625 DIA.
5.00	NF	108-005	X 15.44 LG FOR 6.00 STK. .875 DIA. X 21.44 LG FOR 12.00 STK. .875 DIA. X 27.44 LG FOR 18.00 STK. .875 DIA.
	M77	108-105	X 14.19 LG FOR 6.00 STK. .875 DIA. X 20.19 LG FOR 12.00 STK. .875 DIA. X 26.19 LG FOR 18.00 STK. .875 DIA.
	M	202-1059-005*	X 14.94 LG FOR 6.00 STK. .875 DIA. X 20.94 LG FOR 12.00 STK. .875 DIA. X 26.94 LG FOR 18.00 STK. .875 DIA.
	M	D31507	N/A SUB 202-1059-005 *T/R .875 DIA.
	M	D30696	N/A SUB 202-1059-005 *T/R X 13.41 LG FOR 6.00 STK. .875 DIA.
6.00	NF	108-006	X 16.78 LG FOR 6.00 STK. 1.000 DIA. X 22.78 LG FOR 12.00 STK. 1.000 DIA. X 28.78 LG FOR 18.00 STK. 1.000 DIA.
	M77	108-106	X 15.31 LG FOR 6.00 STK. 1.000 DIA. X 21.31 LG FOR 12.00 STK. 1.000 DIA. X 27.31 LG FOR 18.00 STK. 1.000 DIA.
	M	202-1059-006*	X 16.12 LG FOR 6.00 STK. 1.000 DIA. X 22.12 LG FOR 12.00 STK. 1.000 DIA. X 28.12 LG FOR 18.00 STK. 1.000 DIA.
	M	D31565	N/A SUB 202-1059-006 *T/R 1.000 DIA.
	E	NOT MANUFD.	

\*N/A FROM STOCK • C/F FOR DELIVERY  
DATA SUBJECT TO CHANGE WITHOUT NOTICE



# Anchor/Darling

## REPLACEMENT PARTS MANUAL

### ITEM #12 MAIN CYLINDER TIE ROD (Continued)

BORE	CODE	DRAWING	INTERCHANGE REMARKS
8.00	NF	108-007	X 19.81 LG FOR 6.00 STK. 1.250 DIA. X 25.81 LG FOR 12.00 STK. 1.250 DIA. X 31.81 LG FOR 18.00 STK. 1.250 DIA.
	M77	108-107	X 18.06 LG FOR 6.00 STK. 1.250 DIA. X 24.06 LG FOR 12.00 STK. 1.250 DIA. X 30.06 LG FOR 18.00 STK. 1.250 DIA.
	M	202-1059-007*	X 19.00 LG FOR 6.00 STK. 1.250 DIA. X 25.00 LG FOR 12.00 STK. 1.250 DIA. X 31.00 LG FOR 18.00 STK. 1.250 DIA.
	M	D31790	N/A SUB 202-1059-007 *T/R 1.250 DIA.
	E	D32112E	N/A SUB 202-1059-003 *T/R X 17.00 LG FOR 6.00 STK. .625 DIA.
10.00	NF	108-008	X 22.69 LG FOR 6.00 STK. 1.750 DIA. X 28.69 LG FOR 12.00 STK. 1.750 DIA. X 34.69 LG FOR 18.00 STK. 1.750 DIA.
	M77	108-108	X 20.38 LG FOR 6.00 STK. 1.750 DIA. X 26.38 LG FOR 12.00 STK. 1.750 DIA. X 32.38 LG FOR 18.00 STK. 1.750 DIA.
	M	D26535C*	X 21.56 LG FOR 6.00 STK. 1.750 DIA.
	E	D30681*	X 19.00 LG FOR 6.00 STK. 1.000 DIA. X 25.00 LG FOR 12.00 STK. 1.000 DIA. X 31.00 LG FOR 18.00 STK. 1.000 DIA.

### ITEM #13 NAME PLATE

BORE	CODE	DRAWING	INTERCHANGE REMARKS
ALL	NF	147-000	N/A SUB 21971 NAME PLATE
ALL	M77	147-000	N/A SUB 21971 NAME PLATE
ALL	M	D30690C	N/A SUB 21971 NAME PLATE
ALL	E	D28590	N/A SUB 21971 NAME PLATE



**Anchor/Darling**

# REPLACEMENT PARTS MANUAL

## ITEM #14 LOCK PIN

## ITEM #15 DRIVE SCREW

BORE	CODE	DRAWING	INTERCHANGE REMARKS
ALL	NF	2-1000-003	
ALL	M77	2-1000-003	
ALL	M	2-1000-003	
1.50	E	D19275-C2	100 PC MINIMUM ORDER QUANTITY N/A FROM STOCK C/F FOR DELIVERY
2.50 thru 4.00	E	D19275-C3	100 PC MINIMUM ORDER QUANTITY N/A FROM STOCK C/F FOR DELIVERY
5.00 thru 10.00	E	NOT REQD.	

DATA SUBJECT TO CHANGE WITHOUT NOTICE

## ITEM #16 FRONT RETAINER FLANGE

## ITEM #17 ROD PACKING WASHER

## ITEM #18 SUPPORT ANGLE

## ITEM #19 SUPPORT ANGLE MOUNTING SCREW

(Item #'s 14 and 16 through 19 E — Discontinued)



# Anchor/Darling

## REPLACEMENT PARTS MANUAL

### ITEM #20 POPPET STOP

BORE	CODE	DRAWING	INTERCHANGE REMARKS
1.50 thru 6.00	NF	202-1051-000	
	M77	202-1051-000	
	M	D31276	N/A SUB 202-1051-000 POPPET STOP
	E	NOT REQD.	
8.00 and 10.00	NF	138-002	
	M77	138-002	
	M	D31699	N/A SUB 138-002 POPPET STOP
	E	NOT REQD.	

### ITEM #21 ORIFICE POPPET: EXTENSION

BORE	CODE	DRAWING	INTERCHANGE REMARKS
1.50	NF	202-1061-002	
	M77	202-1061-002	
	M	606-40002-004	N/A SUB 202-1061-002 POPPET (EXT.) AND A/R (1) 146B-000 POPPET SPRING
	E	D30675	N/A MANUFACTURING DRAWING N/A
2.50	NF	202-1061-004	
	M77	202-1061-004	
	M	606-40002-008	N/A SUB 202-1061-004 POPPET (EXT.)
	E	D27594	N/A MANUFACTURING DRAWING N/A
	E	D27594L	N/A MANUFACTURING DRAWING N/A
	E	D27594S	N/A MANUFACTURING DRAWING N/A
3.25	NF	202-1061-006	
	M77	202-1061-006	
	M	606-40002-012	N/A SUB 202-1061-006 POPPET (EXT.)
	E	D27594P	N/A MANUFACTURING DRAWING N/A
	E	D27594C	N/A MANUFACTURING DRAWING N/A
4.00	NF	202-1061-008	
	M77	202-1061-008	
	M	606-40002-016	N/A SUB 202-1061-008 POPPET (EXT.)
	E	D27594M	N/A MANUFACTURING DRAWING N/A
	E	D29908A	N/A MANUFACTURING DRAWING N/A
5.00	NF	202-1061-010	
	M77	202-1061-010	
	M	606-40002-020	N/A SUB 202-1061-010 POPPET (EXT.)
	E	D30790	N/A MANUFACTURING DRAWING N/A

\*POPPETS CALIBRATED TO SF 1154 SILICONE FLUID. USE IN A DIFFERENT VISCOSITY FLUID WILL AFFECT CALIBRATION.  
DATA SUBJECT TO CHANGE WITHOUT NOTICE



# Anchor/Darling

## REPLACEMENT PARTS MANUAL

### ITEM #21 ORIFICE POPPET: EXTENSION (Continued)

BORE	CODE	DRAWING	INTERCHANGE REMARKS
6.00	NF	202-1061-012	
	M77	202-1061-012	
	M	606-40002-024	N/A SUB 202-1061-012 POPPET (EXT.)
	E	NOT MANUFD.	
8.00	NF	202-1061-014	
	M77	202-1061-014	
	M	606-40005-004	N/A SUB 202-1061-014 POPPET (EXT.)
	M	D31791	N/A MANUFACTURING DRAWING N/A
	E	NOT MANUFD.	
10.00	NF	139-016	
	M77	139-016	
	M	D31701	N/A SUB 139-016 POPPET (EXT.)
	M	606-40005-008	N/A SUB 139-016 POPPET (EXT.)
	E	D30667	N/A MANUFACTURING DRAWING N/A

\*POPPETS CALIBRATED TO SF 1154 SILICONE FLUID. USE IN A DIFFERENT VISCOSITY FLUID WILL AFFECT CALIBRATION.

### ITEM #22 POPPET SPRING

BORE	CODE	DRAWING	INTERCHANGE REMARKS
1.50 thru 4.00	NF	146B-000	
	M77	146B-000	
	/	D30672	N/A SUB 146A-000 POPPET SPRING FOR 1.50 BORE ONLY
	M	D19806A	N/A SUB 146B-000 POPPET SPRING
	E	D19806	
5.00 & 6.00	NF	146C-000	
	M77	146C-000	
	M	D19806B	N/A SUB 146C-000 POPPET SPRING
	E	D30789	
8.00 & 10.00	NF	146D-000	
	M77	146D-000	
	M	D30789F	N/A SUB 146D-000 POPPET SPRING

### ITEM #23 RELIEF VALVE BALL

BORE	CODE	DRAWING	INTERCHANGE REMARKS
ALL	NF	102-1000-000	
ALL	M77	102-1000-000	
ALL	/	D23569-6	N/A SUB 102-1000-000 RELIEF VALVE BALL

DATA SUBJECT TO CHANGE WITHOUT NOTICE





# Anchor/Darling

## REPLACEMENT PARTS MANUAL

### ITEM #24 RELIEF VALVE SPRING

BORE	CODE	DRAWING	INTERCHANGE REMARKS
ALL	NF	102-1001-000	3000 LB. RELIEF
		102-1006-000	6800 LB. RELIEF
ALL	M77	102-1001-000	3000 LB. RELIEF
		102-1006-000	6800 LB. RELIEF
ALL	/	102-1001-000	3000 LB. RELIEF

### ITEM #25 ORIFICE POPPET: COMPRESSION

BORE	CODE	DRAWING	INTERCHANGE REMARKS
1.50	NF	202-1061-001	
	M77	202-1061-001	
	M	606-40002-003	N/A SUB 202-1061-001 POPPET (COMP.) A/R 146B-000 POPPET SPRING
	E	D30675	N/A MANUFACTURING DRAWING N/A
2.50	NF	202-1061-003	
	M77	202-1061-003	
	M	606-40002-007	N/A SUB 202-1061-003 POPPET (COMP.)
	E	D27594	N/A MANUFACTURING DRAWING N/A
	E	D27594L	N/A MANUFACTURING DRAWING N/A
	E	D275945	N/A MANUFACTURING DRAWING N/A
3.25	NF	202-1061-005	
	M77	202-1061-005	
	M	606-40002-011	N/A SUB 202-1061-005 POPPET (COMP.)
	E	D27594P	N/A MANUFACTURING DRAWING N/A
	E	D27594U	N/A MANUFACTURING DRAWING N/A
4.00	NF	202-1061-007	
	M77	202-1061-007	
	M	606-40002-015	N/A SUB 202-1061-007 POPPET (COMP.)
	E	D27594M	N/A MANUFACTURING DRAWING N/A
	E	D29908A	N/A MANUFACTURING DRAWING N/A
5.00	NF	202-1061-009	
	M77	202-1061-009	
	M	606-40002-019	N/A SUB 202-1061-009 POPPET (COMP.)
	E	D30790	N/A MANUFACTURING DRAWING N/A
6.00	NF	202-1061-011	
	M77	202-1061-011	
	M	606-40002-023	N/A SUB 202-1061-011 POPPET (COMP.)
	E	NOT MANUFD.	

\*POPPETS CALIBRATED TO SF 1154 SILICONE FLUID. USE IN A DIFFERENT VISCOSITY FLUID WILL AFFECT CALIBRATION.  
DATA SUBJECT TO CHANGE WITHOUT NOTICE



# Anchor/Darling

## REPLACEMENT PARTS MANUAL

### ITEM #25 ORIFICE POPPET: COMPRESSION (Continued)

BORE	CODE	DRAWING	INTERCHANGE REMARKS
8.00	NF	202-1061-013	
	M77	202-1061-013	
	M	606-40005-003	N/A SUB 202-1061-013 POPPET (COMP.)
	M	D31792	N/A SUB 202-1061-013 POPPET (COMP.)
	E		N/A MANUFACTURING DRAWING N/A
10.00	NF	139-015	
	M77	139-015	
	M	606-40005-007	N/A SUB 139-015 POPPET (COMP.)
	M	D31702	N/A SUB 139-015 POPPET (COMP.)
	E		N/A MANUFACTURING DRAWING N/A

\*POPPETS CALIBRATED TO SF 1154 SILICONE FLUID. USE IN A DIFFERENT VISCOSITY FLUID WILL AFFECT CALIBRATION.

### ITEM #26 FLOW CONTROL BODY

BORE	CODE	DRAWING	INTERCHANGE REMARKS
1.50 thru 6.00	NF, M77	302-1061-000*	STANDARD VALVE NO RELIEF
	M	302-1003-000*	3000 LB. RELIEF (SPECIFY) A/R (1) 102-1001-000 RELIEF VALVE SPRING
		302-1003-000*	6800 LB. RELIEF (SPECIFY) A/R (1) 102-1006-000 RELIEF VALVE SPRING
8.00 & 10.00	NF	141A-000	STANDARD VALVE NO RELIEF
		302-1005-000	3000 LB. RELIEF A/R (1) 102-1001-000 RELIEF VALVE SPRING
		302-1005-000	6800 LB. RELIEF A/R (1) 102-1006-000 RELIEF VALVE SPRING
	M77	141A-000	STANDARD VALVE NO RELIEF
		302-1005-000	3000 LB. RELIEF A/R (1) 102-1001-000 RELIEF VALVE SPRING
		302-1005-000	6800 LB. RELIEF A/R (1) 102-1006-000 RELIEF VALVE SPRING
	M	B6825	N/A SUB: (1) 302-1005-000 FLOW CONTROL BODY A/R (1) 102-1001-000 RELIEF VALVE SPRING
E	B6557	N/A MANUFACTURING DRAWING N/A	

\*THESE FLOW CONTROL BODIES HAVE 0.265 DIAMETER MOUNTING HOLES FOR USE WITH THE "NF" AND "M77" CONFIGURATION CYLINDERS WHICH USE 1/4" - 28 UNF SCREWS. THESE BODIES COME WITH (4) MOUNTING HOLE BUSHINGS AND (2) FLAT WASHERS TO MAINTAIN INTERCHANGEABILITY WITH THE "M" CONFIGURATION CYLINDERS WHICH USE #10 - 32 UNF MOUNTING SCREWS. REFER TO THE ENGINEERING NOTES GIVEN AT THE BEGINNING OF THIS SECTION FOR FURTHER DETAILS.

DATA SUBJECT TO CHANGE WITHOUT NOTICE



# Anchor/Darling

## REPLACEMENT PARTS MANUAL

### ITEM #27 RELIEF VALVE PLUG

BORE	CODE	DRAWING	INTERCHANGE REMARKS
1.50 thru 6.00	NF, M77 M	202-1008-000	
8.00 thru 10.00	NF, M77, M	C13793	

### ITEM #28 CONNECTOR TUBE

BORE	CODE	DRAWING	INTERCHANGE REMARKS
1.50	NF, M77, M	202-1050-001	X 6.00 LG FOR 6.00 STK. X 12.00 LG FOR 12.00 STK. X 18.00 LG FOR 18.00 STK.
	E	NOT REQD.	
2.50	NF, M77, M	202-1050-002	X 6.15 LG FOR 6.00 STK. X 12.15 LG FOR 12.00 STK. X 18.15 LG FOR 18.00 STK.
	E	NOT REQD.	
3.25	NF, M77, M	202-1050-003	X 6.40 LG FOR 6.00 STK. X 12.40 LG FOR 12.00 STK. X 18.40 LG FOR 18.00 STK.
	E	NOT REQD.	
4.00	NF, M77, M	202-1050-004	X 6.72 LG FOR 6.00 STK. X 12.72 LG FOR 12.00 STK. X 18.72 LG FOR 18.00 STK.
	E	NOT REQD.	
5.00	NF, M77, M	202-1050-005	X 7.15 LG FOR 6.00 STK. X 13.15 LG FOR 12.00 STK. X 19.15 LG FOR 18.00 STK.
	E	NOT REQD.	
6.00	NF, M77, M	202-1050-006	X 7.64 LG FOR 6.00 STK. X 13.64 LG FOR 12.00 STK. X 19.64 LG FOR 18.00 STK.
	E	NOT REQD.	
8.00	NF, M77, M	142-022	X 7.59 LG FOR 6.00 STK. X 13.59 LG FOR 12.00 STK. X 19.59 LG FOR 18.00 STK.
	E	NOT REQD.	
10.00	NF, M77, M	142-022	X 9.00 LG FOR 6.00 STK. X 15.00 LG FOR 12.00 STK. X 21.00 LG FOR 18.00 STK.
	E	NOT REQD.	



# Anchor/Darling REPLACEMENT PARTS MANUAL

## ITEM #29 PORT PLUG

BORE	CODE	DRAWING	INTERCHANGE REMARKS
1.50 thru 10.00	NF, M77, /	115-001	

DATA SUBJECT TO CHANGE WITHOUT NOTICE

## ITEM #30 RELIEF VALVE SEAT

## ITEM #31 MANIFOLD TUBE CONNECTOR

## ITEM #32 1/2" TUBE FITTING @ CONNECTOR

## ITEM #33 FRONT MANIFOLD BLOCK

## ITEM #34 REAR MANIFOLD BLOCK

## ITEM #35 MANIFOLD CONNECTOR

(Item #'s 30 through 35 E — Discontinued)

 **Anchor/Darling**  
**REPLACEMENT PARTS MANUAL**

**ITEM #36 MANIFOLD MOUNTING SCREW**

**ITEM #37 LOCK WASHER @ MAN. MTG. SCREW**

**ITEM #38 1/4" TUBE FITTING**

**ITEM #39 1/4" MALE CONNECTOR**

**ITEM #40 1/4" TUBE FITTING**

**ITEM #41 MANIFOLD BLOCK**

**ITEM #42 POPPET SPRING GUIDE**

**ITEM #43 1/2" TUBE FITTING**

(Item #'s 36 through 43 E — Discontinued)



# Anchor/Darling

## REPLACEMENT PARTS MANUAL

### ITEM #44 1/2" TUBE

### ITEM #45 TUBE FITTING

(Item #'s 44 & 45 E — Discontinued)

### ITEM #46 RESERVOIR (ACCUMULATOR) CAP

BORE	CODE	DRAWING	INTERCHANGE REMARKS
1.50	NF	148-001	
	M77	148-001	
	M	306-40111-000	N/A FROM STOCK C/F FOR DELIVERY
	M	D31376	N/A SUB: (1) 306-40111-000 RESERVOIR CAP A/R (2) 202-1060-002 T/R (LONG) + (2) 202-1060-001 T/R (SHORT)
	E	C13027	N/A
2.50	NF	148-002	
	M77	148-002	
	M	306-40112-000	N/A FROM STOCK C/F FOR DELIVERY
	M	D31274	N/A SUB: (1) 306-40112-000 RESERVOIR CAP A/R (2) 202-1060-004 T/R (LONG) + (2) 202-1060-003 T/R (SHORT)
	E	D29836	N/A
3.25	NF	148-003	
	M77	148-003	
	M	306-40113-000	N/A FROM STOCK C/F FOR DELIVERY
	M	C13648	N/A SUB: (1) 306-40113-000 RESERVOIR CAP A/R (2) 202-1060-006 T/R (LONG) + (2) 202-1060-005 T/R (SHORT)
	E	D29836	N/A
4.00	NF	148-004	
	M77	148-004	
	M	306-40114-000	N/A FROM STOCK C/F FOR DELIVERY
	M	C13666	N/A SUB: (1) 306-40114-000 RESERVOIR CAP A/R (2) 202-1060-008 T/R (LONG) + (2) 202-1060-007 T/R (SHORT)
	E	C11074	N/A
5.00	NF	148-005	
	M77	148-005	
	M	306-40115-000	N/A FROM STOCK C/F FOR DELIVERY



# Anchor/Darling

## REPLACEMENT PARTS MANUAL

### ITEM #46 RESERVOIR CAP (Continued)

BORE	CODE	DRAWING	INTERCHANGE REMARKS
5.00	M	C13683	N/A SUB: (1) 306-40115-000 RESERVOIR CAP A/R (2) 202-1060-010 T/R (LONG) + (2) 202-1060-009 T/R (SHORT)
	E	C13036	N/A
6.00	NF	148-006	
	M77	148-006	
	M	306-40116-000	N/A FROM STOCK C/F FOR DELIVERY
	M	C13728	N/A SUB: (1) 306-40116-000 RESERVOIR CAP A/R (2) 202-1060-012 T/R (LONG) + (2) 202-1060-011 T/R (SHORT)
	E	NOT MANUFD.	
8.00	NF	148-007	
	M77	148-007	
	M	306-40117-000	N/A FROM STOCK C/F FOR DELIVERY
	M	C13794	N/A SUB: (1) 306-40117-000 RESERVOIR CAP A/R (2) 202-1060-014 T/R (LONG) + (2) 202-1060-013 T/R (SHORT)
	E	C13122	N/A
10.00	NF	148-007	
	M77	148-007	
	M	306-40117-000	N/A FROM STOCK C/F FOR DELIVERY
	M	C13794	N/A SUB: (1) 306-40117-000 RESERVOIR CAP A/R (2) 202-1060-016 T/R (LONG) + (2) 202-1060-015 T/R (SHORT)
	E	C13122	N/A

### ITEM #47 RESERVOIR (ACCUMULATOR) TUBE

BORE	CODE	DRAWING	INTERCHANGE REMARKS
1.50	NF	124-201	FOR 6.00 STROKE
		124-202	FOR 12.00 STROKE
		124-203	FOR 18.00 STROKE
	M77	124-201	FOR 6.00 STROKE
		124-202	FOR 12.00 STROKE
		124-203	FOR 18.00 STROKE

\*THE RESERVOIR OVERFLOW VENT LOCATION IS DIRECTLY RELATED TO INDICATOR ROD, PISTON ROD, AND RESERVOIR FLUID LEVELS. RECALIBRATE AS REQUIRED INDICATOR PLATE LOCATION TO THE INDICATOR ROD TO VERIFY COMPONENT OPERABILITY.  
DATA SUBJECT TO CHANGE WITHOUT NOTICE



# Anchor/Darling

## REPLACEMENT PARTS MANUAL

### ITEM #47 RESERVOIR TUBE (Continued)

BORE	CODE	DRAWING	INTERCHANGE REMARKS
1.50	M	106-40183-001	N/A SUB*: 124-201 RESERVOIR TUBE FOR 6.00 STROKE
		106-40183-002	N/A SUB*: 124-202 RESERVOIR TUBE FOR 12.00 STROKE
		106-40183-003	N/A SUB*: 124-203 RESERVOIR TUBE FOR 18.00 STROKE
	/	D30076C	N/A SUB*: 124-201 RESERVOIR TUBE FOR 6.00 STROKE
2.50	NF	124-204	FOR 6.00 STROKE
		124-205	FOR 12.00 STROKE
		124-206	FOR 18.00 STROKE
	M77	124-204	FOR 6.00 STROKE
		124-205	FOR 12.00 STROKE
		124-206	FOR 18.00 STROKE
	M	106-40183-004	N/A SUB*: 124-204 RESERVOIR TUBE FOR 6.00 STROKE
		106-40183-005	N/A SUB*: 124-205 RESERVOIR TUBE FOR 12.00 STROKE
		106-40183-006	N/A SUB*: 124-206 RESERVOIR TUBE FOR 18.00 STROKE
	/	D29838B	N/A SUB*: 124-204 RESERVOIR TUBE FOR 6.00 STROKE
	M	D29838D	N/A SUB*: 124-206 RESERVOIR TUBE FOR 18.00 STROKE
	E	D29838	N/A SUB*: 124-204 RESERVOIR TUBE FOR 6.00 STROKE
	E	D29838A	N/A SUB*: 124-205 RESERVOIR TUBE FOR 12.00 STROKE
E	D29838C	N/A SUB*: 124-206 RESERVOIR TUBE FOR 18.00 STROKE	
3.25	NF	124-207	FOR 6.00 STROKE
		124-208	FOR 12.00 STROKE
		124-209	FOR 18.00 STROKE
	M77	124-207	FOR 6.00 STROKE
		124-208	FOR 12.00 STROKE
		124-209	FOR 18.00 STROKE

\*THE RESERVOIR OVERFLOW VENT LOCATION IS DIRECTLY RELATED TO INDICATOR ROD, PISTON ROD, AND RESERVOIR FLUID LEVELS. RECALIBRATE AS REQUIRED INDICATOR PLATE LOCATION TO THE INDICATOR ROD TO VERIFY COMPONENT OPERABILITY.  
DATA SUBJECT TO CHANGE WITHOUT NOTICE





# Anchor/Darling

## REPLACEMENT PARTS MANUAL

### ITEM #47 RESERVOIR TUBE (Continued)

BORE	CODE	DRAWING	INTERCHANGE REMARKS
3.25	M	106-40183-007	N/A SUB*: 124-207 RESERVOIR TUBE FOR 6.00 STROKE
		106-40183-008	N/A SUB*: 124-208 RESERVOIR TUBE FOR 12.00 STROKE
		106-40183-009	N/A SUB*: 124-209 RESERVOIR TUBE FOR 18.00 STROKE
	M	D29847C	N/A SUB*: 124-207 RESERVOIR TUBE FOR 6.00 STROKE
	M	D29847D	N/A SUB*: 124-208 RESERVOIR TUBE FOR 12.00 STROKE
	E	D29842	(2.500 I.D. BORE) X 6.91 LG FOR 6.00 STROKE N/A FROM STOCK C/F FOR DELIVERY
	E	D29842A	(2.500 I.D. BORE) X 12.91 LG FOR 12.00 STROKE N/A FROM STOCK C/F FOR DELIVERY
	E	D29842B	(2.500 I.D. BORE) X 18.91 LG FOR 18.00 STROKE N/A FROM STOCK C/F FOR DELIVERY
4.00	NF	124-210	FOR 6.00 STROKE
		124-211	FOR 12.00 STROKE
		124-212	FOR 18.00 STROKE
	M77	124-210	FOR 6.00 STROKE
		124-211	FOR 12.00 STROKE
		124-212	FOR 18.00 STROKE
	M	106-40183-010	N/A SUB*: 124-210 RESERVOIR TUBE FOR 6.00 STROKE
		106-40183-011	N/A SUB*: 124-211 RESERVOIR TUBE FOR 12.00 STROKE
		106-40183-012	N/A SUB*: 124-212 RESERVOIR TUBE FOR 18.00 STROKE
	M	D31496	N/A SUB*: 124-210 RESERVOIR TUBE FOR 6.00 STROKE 124-211 RESERVOIR TUBE FOR 12.00 STROKE 124-212 RESERVOIR TUBE FOR 18.00 STROKE
	M	D31496A	N/A SUB*: 124-211 RESERVOIR TUBE FOR 12.00 STROKE
	E	D29847	(3.250 I.D. BORE) X 7.25 LG FOR 6.00 STROKE N/A FROM STOCK C/F FOR DELIVERY
	E	D29847A	(3.250 I.D. BORE) X 13.25 LG FOR 12.00 STROKE N/A FROM STOCK C/F FOR DELIVERY

\*THE RESERVOIR OVERFLOW VENT LOCATION IS DIRECTLY RELATED TO INDICATOR ROD, PISTON ROD, AND RESERVOIR FLUID LEVELS. RECALIBRATE AS REQUIRED INDICATOR PLATE LOCATION TO THE INDICATOR ROD TO VERIFY COMPONENT OPERABILITY.  
DATA SUBJECT TO CHANGE WITHOUT NOTICE



# Anchor/Darling REPLACEMENT PARTS MANUAL

## ITEM #47 RESERVOIR TUBE (Continued)

BORE	CODE	DRAWING	INTERCHANGE REMARKS
5.00	NF	124-213	FOR 6.00 STROKE
		124-214	FOR 12.00 STROKE
		124-215	FOR 18.00 STROKE
	M77	124-213	FOR 6.00 STROKE
		124-214	FOR 12.00 STROKE
		124-215	FOR 18.00 STROKE
	M	106-40183-013	N/A SUB*: 124-213 RESERVOIR TUBE FOR 6.00 STROKE
		106-40183-014	N/A SUB*: 124-214 RESERVOIR TUBE FOR 12.00 STROKE
		106-40183-015	N/A SUB*: 124-215 RESERVOIR TUBE FOR 18.00 STROKE
	M	D30712A	N/A SUB*: 124-214 RESERVOIR TUBE FOR 12.00 STROKE
	M	D30712B	N/A SUB*: 124-213 RESERVOIR TUBE FOR 6.00 STROKE
	E	D30712	N/A SUB*: 124-213 X 7.38 LG FOR 6.00 STROKE N/A FROM STOCK C/F FOR DELIVERY
6.00	NF	124-216	FOR 6.00 STROKE
		124-217	FOR 12.00 STROKE
		124-218	FOR 18.00 STROKE
	M77	124-216	FOR 6.00 STROKE
		124-217	FOR 12.00 STROKE
		124-218	FOR 18.00 STROKE
	M	106-40183-016	N/A SUB*: 124-216 X 8.00 LG RESERVOIR TUBE FOR 6.00 STROKE
		106-40183-017	N/A SUB*: 124-217 X 14.00 LG RESERVOIR TUBE FOR 12.00 STROKE
		106-40183-018	N/A SUB*: 124-218 X 20.00 LG RESERVOIR TUBE FOR 18.00 STROKE
	M	D31577	N/A SUB*: 124-016 X 8.00 LG RESERVOIR TUBE FOR 6.00 STROKE
	M	D31577	N/A SUB*: 124-017 X 14.00 LG RESERVOIR TUBE FOR 12.00 STROKE
	E	NOT MANUFD.	

\*THE RESERVOIR OVERFLOW VENT LOCATION IS DIRECTLY RELATED TO INDICATOR ROD, PISTON ROD, AND RESERVOIR FLUID LEVELS. RECALIBRATE AS REQUIRED INDICATOR PLATE LOCATION TO THE INDICATOR ROD TO VERIFY COMPONENT OPERABILITY. DATA SUBJECT TO CHANGE WITHOUT NOTICE



# Anchor/Darling

## REPLACEMENT PARTS MANUAL

### ITEM #47 RESERVOIR TUBE (Continued)

BORE	CODE	DRAWING	INTERCHANGE REMARKS
8.00	NF	124-219	FOR 6.00 STROKE
		124-220	FOR 12.00 STROKE
		124-221	FOR 18.00 STROKE
	M77	124-219	FOR 6.00 STROKE
		124-220	FOR 12.00 STROKE
		124-221	FOR 18.00 STROKE
	M	106-40183-019	N/A SUB*: 124-219 RESERVOIR TUBE FOR 6.00 STROKE
	E	D31092	(5.000 I.D. BORE) X 9.38 LG FOR 6.00 STROKE N/A FROM STOCK C/F FOR DELIVERY
10.00	NF	124-222	FOR 6.00 STROKE
		124-223	FOR 12.00 STROKE
		124-224	FOR 18.00 STROKE
	M77	124-222	FOR 6.00 STROKE
		124-223	FOR 12.00 STROKE
		124-224	FOR 18.00 STROKE
	M	106-40183-022	N/A SUB*: 124-022 X 11.19 LG RESERVOIR TUBE FOR 6.00 STROKE N/A FROM STOCK C/F FOR DELIVERY
	E	D30674	N/A FROM STOCK C/F FOR DELIVERY

\*THE RESERVOIR OVERFLOW VENT LOCATION IS DIRECTLY RELATED TO INDICATOR ROD, PISTON ROD, AND RESERVOIR FLUID LEVELS. RECALIBRATE AS REQUIRED INDICATOR PLATE LOCATION TO THE INDICATOR ROD TO VERIFY COMPONENT OPERABILITY.

### ITEM #48 RESERVOIR (ACCUMULATOR) PISTON

BORE	CODE	DRAWING	INTERCHANGE REMARKS
1.50	NF	123-001	
	M77	123-001	
	M	106-80103-001*	N/A SUB: (1) 123-001 RESERVOIR PISTON A/R (1) 202-1014-001 RESERVOIR SPRING
	I	D30654*	N/A SUB: (1) 123-001 RESERVOIR PISTON A/R (1) 202-1014-001 RESERVOIR SPRING

\*.75 OR LONGER THREAD AT INDICATOR ROD MUST BE MODIFIED TO .62 FOR INDICATOR ROD TO PISTON MARRIAGE USING INTERCHANGE COMPONENTS.

\*THE RESERVOIR OVERFLOW VENT LOCATION IS DIRECTLY RELATED TO INDICATOR ROD, PISTON ROD, AND RESERVOIR FLUID LEVELS. RECALIBRATE AS REQUIRED INDICATOR PLATE LOCATION TO THE INDICATOR ROD TO VERIFY COMPONENT OPERABILITY.

DATA SUBJECT TO CHANGE WITHOUT NOTICE



# Anchor/Darling

# REPLACEMENT PARTS MANUAL

## ITEM #48 RESERVOIR PISTON (Continued)

BORE	CODE	DRAWING	INTERCHANGE REMARKS
2.50	NF	123-002	
	M77	123-002	
	M	106-80103-002*	N/A SUB: (1) 123-002 RESERVOIR PISTON A/R (1) 202-1014-002 RESERVOIR SPRING
	/	D29839*	N/A SUB: (1) 123-002 RESERVOIR PISTON A/R (1) 202-1014-002 RESERVOIR SPRING
3.25	NF	123-003	
	M77	123-003	
	M	106-80103-003*	N/A SUB: (1) 123-003 RESERVOIR PISTON A/R (1) 202-1014-003 RESERVOIR SPRING
	M	D29846A*	N/A SUB: (1) 123-003 RESERVOIR PISTON A/R (1) 202-1014-003 RESERVOIR SPRING
	E	D29839*	N/A SUB: (1) 123-002 RESERVOIR PISTON A/R (1) 202-1014-002 RESERVOIR SPRING
4.00	NF	123-004	
	M77	123-004	
	M	106-80103-004*	N/A SUB: (1) 123-004 RESERVOIR PISTON A/R (1) 202-1014-004 RESERVOIR SPRING
	M	D31497*	N/A SUB: (1) 123-004 RESERVOIR PISTON A/R (1) 202-1014-004 RESERVOIR SPRING
	E	D20946*	N/A SUB: (1) 123-003 RESERVOIR PISTON A/R (1) 202-1014-003 RESERVOIR SPRING
5.00	NF	123-005	
	M77	123-005	
	M	106-80103-005*	N/A SUB: (1) 123-005 RESERVOIR PISTON A/R (1) 202-1014-005 RESERVOIR SPRING
	/	C13038*	N/A SUB: (1) 123-005 RESERVOIR PISTON A/R (1) 202-1014-005 RESERVOIR SPRING

\*.75 OR LONGER THREAD AT INDICATOR ROD MUST BE MODIFIED TO .62 FOR INDICATOR ROD TO PISTON MARRIAGE USING INTERCHANGE COMPONENTS.

\*THE RESERVOIR OVERFLOW VENT LOCATION IS DIRECTLY RELATED TO INDICATOR ROD, PISTON ROD, AND RESERVOIR FLUID LEVELS. RECALIBRATE AS REQUIRED INDICATOR PLATE LOCATION TO THE INDICATOR ROD TO VERIFY COMPONENT OPERABILITY.

DATA SUBJECT TO CHANGE WITHOUT NOTICE



# Anchor/Darling

## REPLACEMENT PARTS MANUAL

### ITEM #48 RESERVOIR PISTON (Continued)

BORE	CODE	DRAWING	INTERCHANGE REMARKS
6.00	NF	123-006	
	M77	123-006	
	M	106-80103-006*	N/A SUB: (1) 123-006 RESERVOIR PISTON A/R (1) 202-1014-006 RESERVOIR SPRING
	M	C13729*	N/A SUB: (1) 123-006 RESERVOIR PISTON A/R (1) 202-1014-006 RESERVOIR SPRING
	E	NOT MANUFD.	
8.00	NF	123-007	
	M77	123-007	
	M	C13795*	N/A SUB: (1) 123-007 RESERVOIR PISTON A/R (1) 202-1014-008 RESERVOIR SPRING
	E	C13038*	N/A SUB: (1)123-005 RESERVOIR PISTON A/R (1) 202-1014-005 RESERVOIR SPRING
10.00	NF	123-007	
	M77	123-007	
	M	C13795*	N/A SUB: (1) 123-007 RESERVOIR PISTON A/R (1) 202-1014-000 RESERVOIR SPRING
	E	C13112*	N/A

\*.75 OR LONGER THREAD AT INDICATOR ROD MUST BE MODIFIED TO .62 FOR INDICATOR ROD TO PISTON MARRIAGE USING INTERCHANGE COMPONENTS.

\*THE RESERVOIR OVERFLOW VENT LOCATION IS DIRECTLY RELATED TO INDICATOR ROD, PISTON ROD, AND RESERVOIR FLUID LEVELS. RECALIBRATE AS REQUIRED INDICATOR PLATE LOCATION TO THE INDICATOR ROD TO VERIFY COMPONENT OPERABILITY.

### ITEM #49 RESERVOIR SPRING

BORE	CODE	DRAWING	INTERCHANGE REMARKS
1.50	NF	202-1014-001	
	M77	202-1014-001	
	M	D29015A	N/A SUB: (1) 202-1014-001 RESERVOIR SPRING
	E	D29015	N/A SUB: (1) 202-1014-001 RESERVOIR SPRING
2.50	NF	202-1014-002	
	M77	202-1014-002	
	M	D28556A	N/A SUB: (1) 202-1014-002 RESERVOIR SPRING
	E	D28556	N/A SUB: (1) 202-1014-002 RESERVOIR SPRING

DATA SUBJECT TO CHANGE WITHOUT NOTICE



# Anchor/Darling REPLACEMENT PARTS MANUAL

## ITEM #49 RESERVOIR SPRING (Continued)

BORE	CODE	DRAWING	INTERCHANGE REMARKS
3.25	NF	202-1014-003	
	M77	202-1014-003	
	M	D29296A	N/A SUB: (1) 202-1014-003 RESERVOIR SPRING
	E	D28556	N/A SUB: (1) 202-1014-003 RESERVOIR SPRING
4.00	NF	202-1014-004	
	M77	202-1014-004	
	M	D31495	N/A SUB: (1) 202-1014-004 RESERVOIR SPRING
	E	D29296	N/A SUB: (1) 202-7014-004 RESERVOIR SPRING
5.00	NF	202-1014-005	
	M77	202-1014-005	
	/	D30630	N/A SUB: (1) 202-1014-005 RESERVOIR SPRING
6.00	NF	202-1014-006	
	M77	202-1014-006	
	M	D31578	N/A SUB: (1) 202-1014-006 RESERVOIR SPRING
8.00 & 10.00	NF, M77		REQUIRES ONE EACH 202-1014-006 & 202-1014-008
	M		REQUIRES ONE EACH 202-1014-006 & 202-1014-008 & A/R (1) 123-007 RESERVOIR PISTON
	E		N/A

DATA SUBJECT TO CHANGE WITHOUT NOTICE



# Anchor/Darling REPLACEMENT PARTS MANUAL

## ITEM #50 INDICATOR ROD

BORE	CODE	DRAWING	INTERCHANGE REMARKS
1.50	NF	302-1021-001	FOR 6.00 STROKE
		302-1021-002	FOR 12.00 STROKE
		302-1021-003	FOR 18.00 STROKE
	M77	302-1021-001	FOR 6.00 STROKE
		302-1021-002	FOR 12.00 STROKE
		302-1021-003	FOR 18.00 STROKE
	M	106-40182-001	N/A SUB*: 302-1021-001 INDICATOR ROD FOR 6.00 STROKE
		106-40182-002	N/A SUB*: 302-1021-002 INDICATOR ROD FOR 12.00 STROKE
		106-40182-003	N/A SUB*: 302-1021-003 INDICATOR ROD FOR 18.00 STROKE
	M	D30655A	N/A SUB*: 302-1021-001 INDICATOR ROD FOR 6.00 STROKE
	M	D30655B	N/A SUB*: 302-1021-002 INDICATOR ROD FOR 12.00 STROKE
	M	D30655C	N/A SUB*: 302-1021-003 INDICATOR ROD FOR 18.00 STROKE
E	D30655	N/A SUB*: 302-1021-001 INDICATOR ROD FOR 6.00 STROKE	
2.50	NF	302-1021-004	FOR 6.00 STROKE
		302-1021-005	FOR 12.00 STROKE
		302-1021-006	FOR 18.00 STROKE
	M77	302-1021-004	FOR 6.00 STROKE
		302-1021-005	FOR 12.00 STROKE
		302-1021-006	FOR 18.00 STROKE
	M	106-40182-004	N/A SUB*: 302-1021-004 INDICATOR ROD FOR 6.00 STROKE
		106-40182-005	N/A SUB*: 302-1021-005 INDICATOR ROD FOR 12.00 STROKE

\*THE RESERVOIR OVERFLOW VENT LOCATION IS DIRECTLY RELATED TO INDICATOR ROD, PISTON ROD, AND RESERVOIR FLUID LEVELS. RECALIBRATE AS REQUIRED INDICATOR PLATE LOCATION TO THE INDICATOR ROD TO VERIFY COMPONENT OPERABILITY.  
DATA SUBJECT TO CHANGE WITHOUT NOTICE



# Anchor/Darling

## REPLACEMENT PARTS MANUAL

### ITEM #50 INDICATOR ROD (Continued)

BORE	CODE	DRAWING	INTERCHANGE REMARKS
2.50	M	106-40182-006	N/A SUB*: 302-1021-006 INDICATOR ROD FOR 18.00 STROKE
	M	D29094H	N/A SUB*: 302-1021-004 INDICATOR ROD FOR 6.00 STROKE
	M	D29094J	N/A SUB*: 302-1021-006 INDICATOR ROD FOR 12.00 STROKE
	M	D29094K	N/A SUB*: 302-1021-005 INDICATOR ROD FOR 18.00 STROKE
	E	D29094	N/A SUB*: 302-1021-004 INDICATOR ROD FOR 6.00 STROKE
	E	D29094A	N/A SUB*: 302-1021-005 INDICATOR ROD FOR 12.00 STROKE
	E	D29094E	N/A SUB*: 302-1021-004 INDICATOR ROD FOR 6.00 STROKE
	E	D29094F	N/A SUB*: 302-1021-009 INDICATOR ROD FOR 18.00 STROKE
3.25	NF	302-1021-007	FOR 6.00 STROKE
		302-1021-008	FOR 12.00 STROKE
		302-1021-009	FOR 18.00 STROKE
	M77	302-1021-007	FOR 6.00 STROKE
		302-1021-008	FOR 12.00 STROKE
		302-1021-009	FOR 18.00 STROKE
	M	106-40182-007	N/A SUB*: 302-1021-007 INDICATOR ROD FOR 6.00 STROKE
		106-40182-008	N/A SUB*: 302-1021-008 INDICATOR ROD FOR 12.00 STROKE
		106-40182-009	N/A SUB*: 302-1021-009 INDICATOR ROD FOR 18.00 STROKE

\*THE RESERVOIR OVERFLOW VENT LOCATION IS DIRECTLY RELATED TO INDICATOR ROD, PISTON ROD, AND RESERVOIR FLUID LEVELS. RECALIBRATE AS REQUIRED INDICATOR PLATE LOCATION TO THE INDICATOR ROD TO VERIFY COMPONENT OPERABILITY.  
DATA SUBJECT TO CHANGE WITHOUT NOTICE





# Anchor/Darling

## REPLACEMENT PARTS MANUAL

### ITEM #50 INDICATOR ROD (Continued)

BORE	CODE	DRAWING	INTERCHANGE REMARKS
3.25	M	D29400F	N/A SUB*: 302-1021-007 INDICATOR ROD FOR 6.00 STROKE
	M	D29400G	N/A SUB*: 302-1021-008 INDICATOR ROD FOR 12.00 STROKE
	E	D29400	N/A SUB*: 302-1021-010 INDICATOR ROD FOR 6.00 STROKE
	E	D29400C	N/A SUB*: 302-1021-010 INDICATOR ROD FOR 6.00 STROKE
	E	D29400D	N/A SUB*: 302-1021-005 INDICATOR ROD FOR 12.00 STROKE
	E	D29400E	N/A SUB*: 302-1021-003 INDICATOR ROD FOR 18.00 STROKE
	M	D29400H	N/A SUB*: 302-1021-009 INDICATOR ROD FOR 18.00 STROKE
4.00	NF	302-1021-010	FOR 6.00 STROKE
		302-1021-011	FOR 12.00 STROKE
		302-1021-012	FOR 18.00 STROKE
	M77	302-1021-010	FOR 6.00 STROKE
		302-1021-011	FOR 12.00 STROKE
		302-1021-012	FOR 18.00 STROKE
	M	106-40182-010	N/A SUB*: 302-1021-010 INDICATOR ROD FOR 6.00 STROKE
		106-40182-011	N/A SUB*: 302-1021-011 INDICATOR ROD FOR 12.00 STROKE
		106-40182-012	N/A SUB*: 302-1021-012 INDICATOR ROD FOR 18.00 STROKE
	M	D29382G	N/A SUB*: 302-1021-010 INDICATOR ROD FOR 6.00 STROKE

\*THE RESERVOIR OVERFLOW VENT LOCATION IS DIRECTLY RELATED TO INDICATOR ROD, PISTON ROD, AND RESERVOIR FLUID LEVELS. RECALIBRATE AS REQUIRED INDICATOR PLATE LOCATION TO THE INDICATOR ROD TO VERIFY COMPONENT OPERABILITY. DATA SUBJECT TO CHANGE WITHOUT NOTICE



# Anchor/Darling REPLACEMENT PARTS MANUAL

## ITEM #50 INDICATOR ROD (Continued)

BORE	CODE	DRAWING	INTERCHANGE REMARKS
4.00	M	D29382H	N/A SUB*: 302-1021-011 INDICATOR ROD FOR 12.00 STROKE
	M	D29382K	N/A SUB*: 302-1021-012 INDICATOR ROD FOR 18.00 STROKE
	M	D29382	N/A SUB*: 302-1021-010 INDICATOR ROD FOR 6.00 STROKE
	M	D29382D	N/A SUB*: 302-1021-010 INDICATOR ROD FOR 6.00 STROKE
	E	D29382E	N/A SUB*: 302-1021-005 INDICATOR ROD FOR 12.00 STROKE
5.00	NF	302-1021-013	FOR 6.00 STROKE
		302-1021-014	FOR 12.00 STROKE
		302-1021-015	FOR 18.00 STROKE
	M77	302-1021-013	FOR 6.00 STROKE
		302-1021-014	FOR 12.00 STROKE
		302-1021-015	FOR 18.00 STROKE
	M	106-40182-013	N/A SUB*: 302-1021-013 INDICATOR ROD FOR 6.00 STROKE
		106-40182-014	N/A SUB*: 302-1021-014 INDICATOR ROD FOR 12.00 STROKE
		106-40182-015	N/A SUB*: 302-1021-015 INDICATOR ROD FOR 18.00 STROKE
	M	D30828B	N/A SUB*: 302-1021-013 INDICATOR ROD FOR 6.00 STROKE
	M	D30727E	N/A SUB*: 302-1021-015 INDICATOR ROD FOR 18.00 STROKE
	M	D30727C	N/A SUB*: 302-1021-014 INDICATOR ROD FOR 12.00 STROKE
	E	D30727	N/A SUB*: 302-1021-010 INDICATOR ROD FOR 6.00 STROKE

\*THE RESERVOIR OVERFLOW VENT LOCATION IS DIRECTLY RELATED TO INDICATOR ROD, PISTON ROD, AND RESERVOIR FLUID LEVELS. RECALIBRATE AS REQUIRED INDICATOR PLATE LOCATION TO THE INDICATOR ROD TO VERIFY COMPONENT OPERABILITY.

DATA SUBJECT TO CHANGE WITHOUT NOTICE



# Anchor/Darling REPLACEMENT PARTS MANUAL

## ITEM #50 INDICATOR ROD (Continued)

BORE	CODE	DRAWING	INTERCHANGE REMARKS
6.00	NF	302-1021-016	FOR 6.00 STROKE
		302-1021-017	FOR 12.00 STROKE
		302-1021-018	FOR 18.00 STROKE
	M77	302-1021-016	FOR 6.00 STROKE
		302-1021-017	FOR 12.00 STROKE
		302-1021-018	FOR 18.00 STROKE
	M	106-40182-016	N/A SUB*: 302-1021-016 INDICATOR ROD FOR 6.00 STROKE
		106-40182-017	N/A SUB*: 302-1021-017 INDICATOR ROD FOR 12.00 STROKE
		106-40182-018	N/A SUB*: 302-1021-018 INDICATOR ROD FOR 18.00 STROKE
	M	D30727D	N/A SUB*: 302-1021-016 INDICATOR ROD FOR 6.00 STROKE
	M	D30727F	N/A SUB*: 302-1021-018 INDICATOR ROD FOR 18.00 STROKE
	M	D30727G	N/A SUB*: 302-1021-017 INDICATOR ROD FOR 12.00 STROKE
	E	NOT MANUFD.	
8.00	NF	302-1021-037	FOR 6.00 STROKE
		302-1021-038	FOR 12.00 STROKE
		302-1021-039	FOR 18.00 STROKE
	M77	302-1021-037	FOR 6.00 STROKE
		302-1021-038	FOR 12.00 STROKE
		302-1021-039	FOR 18.00 STROKE
	M	106-40150-001	N/A SUB*: 302-1021-037 INDICATOR ROD FOR 6.00 STROKE
		106-40150-002	N/A SUB*: 302-1021-038 INDICATOR ROD FOR 12.00 STROKE
		106-40150-003	N/A SUB*: 302-1021-039 INDICATOR ROD FOR 18.00 STROKE

\*THE RESERVOIR OVERFLOW VENT LOCATION IS DIRECTLY RELATED TO INDICATOR ROD, PISTON ROD, AND RESERVOIR FLUID LEVELS. RECALIBRATE AS REQUIRED INDICATOR PLATE LOCATION TO THE INDICATOR ROD TO VERIFY COMPONENT OPERABILITY. DATA SUBJECT TO CHANGE WITHOUT NOTICE



# Anchor/Darling REPLACEMENT PARTS MANUAL

## ITEM #50 INDICATOR ROD (Continued)

BORE	CODE	DRAWING	INTERCHANGE REMARKS
8.00	M	D30676B	N/A SUB*: 302-1021-037 INDICATOR ROD FOR 6.00 STROKE
	E	D30727A	N/A
10.00	NF	302-1021-040	FOR 6.00 STROKE
		302-1021-041	FOR 12.00 STROKE
		302-1021-042	FOR 18.00 STROKE
	M77	302-1021-040	FOR 6.00 STROKE
		302-1021-041	FOR 12.00 STROKE
		302-1021-042	FOR 18.00 STROKE
	M	106-40150-004	N/A SUB*: 302-1021-040 INDICATOR ROD FOR 6.00 STROKE
		106-40150-005	N/A SUB*: 302-1021-041 INDICATOR ROD FOR 12.00 STROKE
		106-40150-006	N/A SUB*: 302-1021-042 INDICATOR ROD FOR 18.00 STROKE
	M	D30676A	N/A SUB*: 302-1021-040 INDICATOR ROD FOR 6.00 STROKE
M	D30676	N/A SUB*: 302-1021-040 INDICATOR ROD FOR 6.00 STROKE	

\*THE RESERVOIR OVERFLOW VENT LOCATION IS DIRECTLY RELATED TO INDICATOR ROD, PISTON ROD, AND RESERVOIR FLUID LEVELS. RECALIBRATE AS REQUIRED INDICATOR PLATE LOCATION TO THE INDICATOR ROD TO VERIFY COMPONENT OPERABILITY.  
DATA SUBJECT TO CHANGE WITHOUT NOTICE



# Anchor/Darling REPLACEMENT PARTS MANUAL

## ITEM #51 LOCK NUT

BORE	CODE	DRAWING	INTERCHANGE REMARKS
1.50	NF	202-1038-000	
	M77	202-1038-000	
	/	D23555-8	N/A SUB. 202-1038-000
2.50 thru 6.00	NF	296-1000-008	N/A SUB. 22119
	M77	296-1000-008	N/A SUB. 22119
	/	D23555-8	N/A SUB. 22119
8.00	NF	296-1000-012	
	M77	296-1000-012	
	M	D23555-12	N/A SUB. 296-1000-012
	E	D23555-8	N/A SUB. 22119
10.00	NF	296-1000-012	
	M77	296-1000-012	
	/	D23555-12	N/A SUB. 296-1000-012

## ITEM #52 PROTECTIVE TUBE

BORE	CODE	DRAWING	INTERCHANGE REMARKS
1.50	NF	302-1012-001	FOR 6.00 STROKE
		302-1012-002	FOR 12.00 STROKE
		302-1012-003	FOR 18.00 STROKE
	M77	302-1012-001	FOR 6.00 STROKE
		302-1012-002	FOR 12.00 STROKE
		302-1012-003	FOR 18.00 STROKE
	M	106-40176-001	N/A SUB*: 302-1012-001 (PROTECT TUBE) FOR 6.00 STROKE
		106-40176-002	N/A SUB*: 302-1012-002 (PROTECT TUBE) FOR 12.00 STROKE
		106-40176-003	N/A SUB*: 302-1012-002 (PROTECT TUBE) FOR 18.00 STROKE
	M	D29385E	N/A SUB*: 302-1012-001 (PROTECT TUBE) FOR 6.00 STROKE
	/	D30697	N/A SUB*: 302-1012-001 (PROTECT TUBE) FOR 6.00 STROKE

\*THE RESERVOIR OVERFLOW VENT LOCATION IS DIRECTLY RELATED TO INDICATOR ROD, PISTON ROD, AND RESERVOIR FLUID LEVELS. RECALIBRATE AS REQUIRED INDICATOR PLATE LOCATION TO THE INDICATOR ROD TO VERIFY COMPONENT OPERABILITY.

DATA SUBJECT TO CHANGE WITHOUT NOTICE



# Anchor/Darling REPLACEMENT PARTS MANUAL

## ITEM #52 PROTECTIVE TUBE (Continued)

BORE	CODE	DRAWING	INTERCHANGE REMARKS
1.50	M	D30697C	N/A SUB*: 302-1012-002 (PROTECT TUBE) FOR 12.00 STROKE
	M	D30697D	N/A SUB*: 302-1012-003 (PROTECT TUBE) FOR 18.00 STROKE
2.50	NF	302-1012-004	FOR 6.00 STROKE
		302-1012-005	FOR 12.00 STROKE
		302-1012-006	FOR 18.00 STROKE
	M77	302-1012-004	FOR 6.00 STROKE
		302-1012-005	FOR 12.00 STROKE
		302-1012-006	FOR 18.00 STROKE
	M	106-40176-004	N/A SUB*: 302-1012-004 (PROTECT TUBE) FOR 6.00 STROKE
		106-40176-005	N/A SUB*: 302-1012-005 (PROTECT TUBE) FOR 12.00 STROKE
		106-40176-006	N/A SUB*: 302-1012-006 (PROTECT TUBE) FOR 18.00 STROKE
	/	D29096	N/A SUB*: 302-1012-004 (PROTECT TUBE) FOR 6.00 STROKE
	M	D29096D	N/A SUB*: 302-1012-006 (PROTECT TUBE) FOR 18.00 STROKE
	M	D29096E	N/A SUB*: 302-1012-005 (PROTECT TUBE) FOR 12.00 STROKE
	E	D29096A	N/A SUB*: 302-1012-005 (PROTECT TUBE)
3.25	NF	302-1012-004	FOR 6.00 STROKE
		302-1012-005	FOR 12.00 STROKE
		302-1012-006	FOR 18.00 STROKE
	M77	302-1012-004	FOR 6.00 STROKE
		302-1012-005	FOR 12.00 STROKE
		302-1012-006	FOR 18.00 STROKE
	M	106-40176-004	N/A SUB*: 302-1012-004 (PROTECT TUBE) FOR 6.00 STROKE

\*THE RESERVOIR OVERFLOW VENT LOCATION IS DIRECTLY RELATED TO INDICATOR ROD, PISTON ROD, AND RESERVOIR FLUID LEVELS. RECALIBRATE AS REQUIRED INDICATOR PLATE LOCATION TO THE INDICATOR ROD TO VERIFY COMPONENT OPERABILITY. DATA SUBJECT TO CHANGE WITHOUT NOTICE



# Anchor/Darling REPLACEMENT PARTS MANUAL

## ITEM #52 PROTECTIVE TUBE (Continued)

BORE	CODE	DRAWING	INTERCHANGE REMARKS
3.25	M	106-40176-005	N/A SUB*: 302-1012-005 (PROTECT TUBE) FOR 12.00 STROKE
	M	106-40176-006	N/A SUB*: 302-1012-006 (PROTECT TUBE) FOR 18.00 STROKE
	M	D29096	N/A SUB*: 302-1012-004 (PROTECT TUBE)
	M	D29096E	N/A SUB*: 302-1012-005 (PROTECT TUBE)
	M	D29398C	N/A SUB*: 302-1012-004 (PROTECT TUBE)
	E	D29398	N/A SUB*: 302-1012-005 (PROTECT TUBE)
	E	D29398A	N/A
	E	D29398B	N/A
4.00	NF	302-1012-004	FOR 6.00 STROKE
		302-1012-005	FOR 12.00 STROKE
		302-1012-006	FOR 18.00 STROKE
	M77	302-1012-004	FOR 6.00 STROKE
		302-1012-005	FOR 12.00 STROKE
		302-1012-006	FOR 18.00 STROKE
	M	106-40176-001	N/A SUB*: 302-1012-004 (PROTECT TUBE) FOR 6.00 STROKE
		106-40176-002	N/A SUB*: 302-1012-005 (PROTECT TUBE) FOR 12.00 STROKE
		106-40176-003	N/A SUB*: 302-1012-006 (PROTECT TUBE) FOR 18.00 STROKE
	M	D29385C	N/A SUB*: 302-1012-004 (PROTECT TUBE)
	M	D29385E	N/A SUB*: 302-1012-004 (PROTECT TUBE)
	M	D30607C	N/A SUB*: 302-1012-005 (PROTECT TUBE)
	M	D30697D	N/A SUB*: 302-1012-006 (PROTECT TUBE)
	E	D29385	N/A SUB*: 302-1012-005 (PROTECT TUBE)
	E	D29385A	N/A SUB*: 302-1012-006 (PROTECT TUBE)

\*THE RESERVOIR OVERFLOW VENT LOCATION IS DIRECTLY RELATED TO INDICATOR ROD, PISTON ROD, AND RESERVOIR FLUID LEVELS. RECALIBRATE AS REQUIRED INDICATOR PLATE LOCATION TO THE INDICATOR ROD TO VERIFY COMPONENT OPERABILITY.  
DATA SUBJECT TO CHANGE WITHOUT NOTICE

## ITEM #52 PROTECTIVE TUBE (Continued)

BORE	CODE	DRAWING	INTERCHANGE REMARKS
5.00	NF	302-1012-004	FOR 6.00 STROKE
		302-1012-005	FOR 12.00 STROKE
		302-1012-006	FOR 18.00 STROKE
	M77	302-1012-004	FOR 6.00 STROKE
		302-1012-005	FOR 12.00 STROKE
		302-1012-006	FOR 18.00 STROKE
	M	106-40176-001	N/A SUB*: 302-1012-004 (PROTECT TUBE) FOR 6.00 STROKE
		106-40176-002	N/A SUB*: 302-1012-005 (PROTECT TUBE) FOR 12.00 STROKE
		106-40176-003	N/A SUB*: 302-1012-006 (PROTECT TUBE) FOR 18.00 STROKE
	M	D29385E	N/A SUB*: 302-1012-004 (PROTECT TUBE)
	M	D30697C	N/A SUB*: 302-1012-005 (PROTECT TUBE)
	M	D30697D	N/A SUB*: 302-1012-006 (PROTECT TUBE)
	E	D30697	N/A SUB*: 302-1012-004 (PROTECT TUBE)
6.00	NF	302-1012-004	FOR 6.00 STROKE
		302-1012-005	FOR 12.00 STROKE
		302-1012-006	FOR 18.00 STROKE
	M77	302-1012-004	FOR 6.00 STROKE
		302-1012-005	FOR 12.00 STROKE
		302-1012-006	FOR 18.00 STROKE
	M	106-40176-001	N/A SUB*: 302-1012-004 (PROTECT TUBE) FOR 6.00 STROKE
		106-40176-002	N/A SUB*: 302-1012-005 (PROTECT TUBE) FOR 12.00 STROKE
		106-40176-003	N/A SUB*: 302-1012-006 (PROTECT TUBE) FOR 18.00 STROKE
	M	D29385E	N/A SUB*: 302-1012-004 (PROTECT TUBE)
	M	D30697C	N/A SUB*: 302-1012-005 (PROTECT TUBE)
	M	D30697D	N/A SUB*: 302-1012-006 (PROTECT TUBE)
	E	NOT MANUFD.	

\*THE RESERVOIR OVERFLOW VENT LOCATION IS DIRECTLY RELATED TO INDICATOR ROD, PISTON ROD, AND RESERVOIR FLUID LEVELS. RECALIBRATE AS REQUIRED INDICATOR PLATE LOCATION TO THE INDICATOR ROD TO VERIFY COMPONENT OPERABILITY.  
DATA SUBJECT TO CHANGE WITHOUT NOTICE





# Anchor/Darling

## REPLACEMENT PARTS MANUAL

### ITEM #52 PROTECTIVE TUBE (Continued)

BORE	CODE	DRAWING	INTERCHANGE REMARKS
8.00	NF	302-1012-013	FOR 6.00 STROKE
		302-1012-014	FOR 12.00 STROKE
		302-1012-015	FOR 18.00 STROKE
	M77	302-1012-013	FOR 6.00 STROKE
		302-1012-014	FOR 12.00 STROKE
		302-1012-015	FOR 18.00 STROKE
	M	106-40177-001	N/A SUB*: 302-1012-013 (PROTECT TUBE) FOR 6.00 STROKE
		106-40177-002	N/A SUB*: 302-1012-014 (PROTECT TUBE) FOR 12.00 STROKE
		106-40177-003	N/A SUB*: 302-1012-015 (PROTECT TUBE) FOR 18.00 STROKE
	M	C13111B	N/A SUB*: 302-1012-013 (PROTECT TUBE)
E	D30697A	N/A SUB*: 302-1012-005 (PROTECT TUBE)	
10.00	NF	302-1012-016	FOR 6.00 STROKE
		302-1012-017	FOR 12.00 STROKE
		302-1012-018	FOR 18.00 STROKE
	M77	302-1012-016	FOR 6.00 STROKE
		302-1012-017	FOR 12.00 STROKE
		302-1012-018	FOR 18.00 STROKE
	M	106-40177-004	N/A SUB*: 302-1012-016 (PROTECT TUBE) FOR 6.00 STROKE
		106-40177-005	N/A SUB*: 302-1012-017 (PROTECT TUBE) FOR 12.00 STROKE
		106-40177-006	N/A SUB*: 302-1012-018 (PROTECT TUBE) FOR 18.00 STROKE
	M	C13111A	N/A SUB*: 302-1012-016 (PROTECT TUBE)
E	C13111	N/A SUB*: 302-1012-015 (PROTECT TUBE)	

DATA SUBJECT TO CHANGE WITHOUT NOTICE

## ITEM #53 RESERVOIR (ACCUMULATOR) HEAD

BORE	CODE	DRAWING	INTERCHANGE REMARKS
1.50	NF	149-101	
	M77	149-101	
	M	D31377	N/A FROM STOCK C/F FOR DELIVERY
	E	D30651	N/A
2.50	NF	149-102	
	M77	149-102	
	M	D31275	N/A FROM STOCK C/F FOR DELIVERY
	E	D29837	N/A
3.25	NF	149-103	
	M77	149-103	
	M	N/A	MANUFACTURING DRAWING N/A
	E	N/A	MANUFACTURING DRAWING N/A
4.00	NF	149-104	
	M77	149-104	
	M	C13667	N/A FROM STOCK C/F FOR DELIVERY
	E	D29848	N/A
5.00	NF	149-105	
	M77	149-105	
	M	C13686	N/A FROM STOCK C/F FOR DELIVERY
	E	C13039	N/A
6.00	NF	149-106	
	M77	149-106	
	M	C13727	N/A FOR STOCK C/F FOR DELIVERY
	E	NOT MANUFD.	
8.00	NF	149-107	
	M77	149-107	
	M	C13796	N/A FROM STOCK C/F FOR DELIVERY
	E	C13039	N/A
10.00	NF	149-107	
	M77	149-107	
	M	C13796	N/A FROM STOCK C/F FOR DELIVERY
	E	C13126	N/A

## ITEM #54 FRONT MOUNTING LUG

BORE	CODE	DRAWING	INTERCHANGE REMARKS
1.50	NF	NOT REQD.	
	M77	NOT REQD.	
	M	D31378	N/A FROM STOCK C/F FOR DELIVERY
	E	NOT REQD.	
2.50	NF	NOT REQD.	
	M77	NOT REQD.	
	M	D31272	N/A FROM STOCK C/F FOR DELIVERY
	E	NOT REQD.	



# Anchor/Darling

## REPLACEMENT PARTS MANUAL

### ITEM #54 FRONT MOUNTING LUG (Continued)

BORE	CODE	DRAWING	INTERCHANGE REMARKS
3.25	NF	NOT REQD.	
	M77	NOT REQD.	
	M	D31408	N/A FROM STOCK C/F FOR DELIVERY
	E	NOT REQD.	
4.00	NF	NOT REQD.	
	M77	NOT REQD.	
	M	D31408A	N/A FROM STOCK C/F FOR DELIVERY
	E	NOT REQD.	
5.00	NF	NOT REQD.	
	M77	NOT REQD.	
	M	D31510	N/A FROM STOCK C/F FOR DELIVERY
	E	NOT REQD.	
6.00	NF	NOT REQD.	
	M77	NOT REQD.	
	M	D31585	N/A FROM STOCK C/F FOR DELIVERY
	E	NOT REQD.	
8.00	NF	NOT REQD.	
	M77	NOT REQD.	
	M	D31709	N/A FROM STOCK C/F FOR DELIVERY
	E	NOT REQD.	
10.00	NF	NOT REQD.	
	M77	NOT REQD.	
	M	D31709	N/A FROM STOCK C/F FOR DELIVERY
	E	NOT REQD.	

### ITEM #55 TIE ROD NUT

BORE	CODE	DRAWING	INTERCHANGE REMARKS
1.50	NF	116-001	
	M77	116-001	
	M	D23555-2	N/A SUB. 296-1000-002 T/R NUT
	E	D23555-1	N/A SUB. 296-1000-001 T/R NUT
2.50	NF	116-001	
	M77	116-001	
	M	D23555-2	N/A SUB. 296-1000-002 T/R NUT
	E	D23555-1	N/A SUB. 296-1000-001 T/R NUT
3.25	NF	116-002	
	M77	116-002	
	M	D23555-3	N/A SUB. 296-1000-003 T/R NUT
	E	D23555-1	N/A SUB. 296-1000-001 T/R NUT



# Anchor/Darling REPLACEMENT PARTS MANUAL

## ITEM #55 TIE ROD NUT (Continued)

BORE	CODE	DRAWING	INTERCHANGE REMARKS
4.00	NF	116-002	
	M77	116-002	
	M	D23555-3	N/A SUB. 296-1000-003 T/R NUT
	E	D23555-1	N/A SUB. 296-1000-001 T/R NUT
5.00	NF	116-004	
	M77	116-004	
	M	D23555-5	N/A SUB. 296-1000-005 T/R NUT
	E	D23555-3	N/A SUB. 296-1000-003 T/R NUT
6.00	NF	116-004	
	M77	116-004	
	M	D23555-5	N/A SUB. 296-1000-005 T/R NUT
	E	NOT MANUFD.	
8.00	NF	116-005	
	M77	116-005	
	M	D23555-7	N/A SUB. 296-1000-007 T/R NUT
	E	D23555-3	N/A SUB. 296-1000-003 T/R NUT
10.00	NF	116-005	
	M77	116-005	
	M	D23555-7	N/A SUB. 296-1000-007 T/R NUT
	E	D23555-5	N/A SUB. 296-1000-005 T/R NUT

## ITEM #56 TIE ROD (LONG)

BORE	CODE	DRAWING	INTERCHANGE REMARKS
1.50	NF	108-009	X 8.69 LG FOR 6.00 STROKE .312 DIA. X 14.69 LG T/R FOR 12.00 STROKE .312 DIA. X 20.69 LG T/R FOR 18.00 STROKE .312 DIA.
	M77	108-009	X 8.69 LG T/R FOR 6.00 STROKE .312 DIA. X 14.69 LG T/R FOR 12.00 STROKE .312 DIA. X 20.69 LG T/R FOR 18.00 STROKE .312 DIA.
	M	202-1060-002	X 8.81 LG T/R FOR 6.00 STROKE .312 DIA. X 14.81 LG T/R FOR 12.00 STROKE .312 DIA. X 20.81 LG T/R FOR 18.00 STROKE .312 DIA.
	M	D31386	N/A SUB 202-1060-002 X 10.44 LG T/R FOR 6.00 STROKE .312 DIA. X 16.44 LG T/R FOR 12.00 STROKE .312 DIA. X 22.44 LG T/R FOR 18.00 STROKE .312 DIA.
	E	D29384*	X 9.31 LG T/R FOR 6.00 STROKE .250 DIA.
	E	D29384C*	X 8.31 LG T/R FOR 6.00 STROKE .250 DIA.

\*N/A FROM STOCK • C/F FOR DELIVERY  
DATA SUBJECT TO CHANGE WITHOUT NOTICE



# Anchor/Darling

## REPLACEMENT PARTS MANUAL

### ITEM #56 TIE ROD (LONG) (Continued)

BORE	CODE	DRAWING	INTERCHANGE REMARKS
2.50	NF, M77	108-010	X 8.81 LG T/R FOR 6.00 STROKE .312 DIA. X 14.81 LG T/R FOR 12.00 STROKE .312 DIA. X 20.81 LG T/R FOR 18.00 STROKE .312 DIA.
	M	202-1060-004	X 9.09 LG T/R FOR 6.00 STROKE .312 DIA. X 15.09 LG T/R FOR 12.00 STROKE .312 DIA. X 21.09 LG T/R FOR 18.00 STROKE .312 DIA.
	M	D31270	N/A SUB 202-1060-004 X 10.75 LG T/R FOR 6.00 STROKE .312 DIA. X 16.75 LG T/R FOR 12.00 STROKE .312 DIA. X 22.75 LG T/R FOR 18.00 STROKE .312 DIA.
	E	D27254L*	X 8.50 LG T/R FOR 6.00 STROKE .250 DIA.
	E	D27254M*	X 14.50 LG T/R FOR 12.00 STROKE .250 DIA.
	E	D2725P*	X 20.50 LG T/R FOR 18.00 STROKE .250 DIA.
3.25	NF	108-011	X 9.44 LG T/R FOR 6.00 STROKE .375 DIA. X 15.44 LG T/R FOR 12.00 STROKE .375 DIA. X 21.44 LG T/R FOR 18.00 STROKE .375 DIA.
	M77	108-011	X 9.44 LG T/R FOR 6.00 STROKE .375 DIA. X 15.44 LG T/R FOR 12.00 STROKE .375 DIA. X 21.44 LG T/R FOR 18.00 STROKE .375 DIA.
	M	202-1060-006	X 9.56 LG T/R FOR 6.00 STROKE .375 DIA. X 15.56 LG T/R FOR 12.00 STROKE .375 DIA. X 21.56 LG T/R FOR 18.00 STROKE .375 DIA.
	M	D31616	N/A 202-1060-006 X 10.91 LG T/R FOR 6.00 STROKE .375 DIA. X 16.91 LG T/R FOR 12.00 STROKE .375 DIA. X 22.91 LG T/R FOR 18.00 STROKE .375 DIA.
	E	D29397*	X 9.12 LG T/R FOR 6.00 STROKE .250 DIA.
	E	D29397A*	X 15.12 LG T/R FOR 12.00 STROKE .250 DIA.
	E	D29397B*	X 21.12 LG T/R FOR 18.00 STROKE .250 DIA.
4.00	NF	108-012	X 9.69 LG T/R FOR 6.00 STROKE .375 DIA. X 15.69 LG T/R FOR 12.00 STROKE .375 DIA. X 21.69 LG T/R FOR 18.00 STROKE .375 DIA.
	M77	108-012	X 9.69 LG T/R FOR 6.00 STROKE .375 DIA. X 15.69 LG T/R FOR 12.00 STROKE .375 DIA. X 21.69 LG T/R FOR 18.00 STROKE .375 DIA.
	M	202-1060-008	X 9.78 LG T/R FOR 6.00 STROKE .375 DIA. X 15.78 LG T/R FOR 12.00 STROKE .375 DIA. X 21.78 LG T/R FOR 18.00 STROKE .375 DIA.
	M	D31409	N/A SUB 202-1060-008 X 11.12 LG T/R FOR 6.00 STROKE .375 DIA. X 17.12 LG T/R FOR 12.00 STROKE .375 DIA. X 23.12 LG T/R FOR 18.00 STROKE .375 DIA.
	M	D31409A	N/A SUB 202-1060-008 X 17.12 LG T/R FOR 12.00 STROKE .375 DIA.

\*N/A FROM STOCK • C/F FOR DELIVERY

DATA SUBJECT TO CHANGE WITHOUT NOTICE

## ITEM #56 TIE ROD (LONG) (Continued)

BORE	CODE	DRAWING	INTERCHANGE REMARKS
4.00	E	D29384*	X 9.31 LG T/R FOR 6.00 STROKE .250 DIA.
	E	D29384A*	X 15.31 LG T/R FOR 12.00 STROKE .250 DIA.
	E	D29384B*	X 21.31 LG T/R FOR 18.00 STROKE .250 DIA.
5.00	NF	108-013	X 10.44 LG T/R FOR 6.00 STROKE .500 DIA. X 16.44 LG T/R FOR 12.00 STROKE .500 DIA. X 22.44 LG T/R FOR 18.00 STROKE .500 DIA.
	M77	108-013	X 10.44 LG T/R FOR 6.00 STROKE .500 DIA. X 16.44 LG T/R FOR 12.00 STROKE .500 DIA. X 22.44 LG T/R FOR 18.00 STROKE .500 DIA.
	M	202-1060-010	X 10.69 LG T/R FOR 6.00 STROKE .500 DIA. X 16.69 LG T/R FOR 12.00 STROKE .500 DIA. X 22.69 LG T/R FOR 18.00 STROKE .500 DIA.
	M	D31511*	X 12.44 LG T/R FOR 6.00 STROKE .500 DIA. X 18.44 LG T/R FOR 12.00 STROKE .500 DIA. X 24.44 LG T/R FOR 18.00 STROKE .500 DIA.
	E	D30716*	X 9.53 LG T/R FOR 6.00 STROKE .375 DIA.
6.00	NF	108-014	X 10.69 LG T/R FOR 6.00 STROKE .500 DIA. X 16.69 LG T/R FOR 12.00 STROKE .500 DIA. X 22.69 LG T/R FOR 18.00 STROKE .500 DIA.
	M77	108-014	X 10.69 LG T/R FOR 6.00 STROKE .500 DIA. X 16.69 LG T/R FOR 12.00 STROKE .500 DIA. X 22.69 LG T/R FOR 18.00 STROKE .500 DIA.
	M	202-1060-012	X 10.88 LG T/R FOR 6.00 STROKE .500 DIA. X 16.88 LG T/R FOR 12.00 STROKE .500 DIA. X 22.88 LG T/R FOR 18.00 STROKE .500 DIA.
	M	D31586*	X 12.62 LG T/R FOR 6.00 STROKE .500 DIA. X 18.62 LG T/R FOR 12.00 STROKE .500 DIA. X 24.62 LG T/R FOR 18.00 STROKE .500 DIA.
	E	NOT MANUFD.	
8.00	NF	108-015	X 12.62 LG T/R FOR 6.00 STROKE .625 DIA. X 18.62 LG T/R FOR 12.00 STROKE .625 DIA. X 24.62 LG T/R FOR 18.00 STROKE .625 DIA.
	M77	108-015	X 12.62 LG T/R FOR 6.00 STROKE .625 DIA. X 18.62 LG T/R FOR 12.00 STROKE .625 DIA. X 24.62 LG T/R FOR 18.00 STROKE .625 DIA.
	M	202-1060-014	X 13.12 LG T/R FOR 6.00 STROKE .625 DIA. X 19.12 LG T/R FOR 12.00 STROKE .625 DIA. X 25.12 LG T/R FOR 18.00 STROKE .625 DIA.
	E	D30716A*	X 11.00 LG T/R FOR 6.00 STROKE .375 DIA.
10.00	NF, M77	108-016	X 14.00 LG T/R FOR 6.00 STROKE .625 DIA. X 20.00 LG T/R FOR 12.00 STROKE .625 DIA. X 26.00 LG T/R FOR 18.00 STROKE .625 DIA.
	M	202-1060-016	X 14.50 LG T/R FOR 6.00 STROKE .625 DIA. X 20.50 LG T/R FOR 12.00 STROKE .625 DIA. X 26.50 LG T/R FOR 18.00 STROKE .625 DIA.
	M	D31710*	X 17.06 LG T/R FOR 6.00 STROKE .625 DIA. X 23.06 LG T/R FOR 12.00 STROKE .625 DIA. X 29.06 LG T/R FOR 18.00 STROKE .625 DIA.
	E	D30671*	X 13.62 LG T/R FOR 6.00 STROKE .500 DIA. X 19.62 LG T/R FOR 12.00 STROKE .500 DIA. X 25.62 LG T/R FOR 18.00 STROKE .500 DIA.

\*N/A FROM STOCK • C/F FOR DELIVERY

DATA SUBJECT TO CHANGE WITHOUT NOTICE



# Anchor/Darling

## REPLACEMENT PARTS MANUAL

### ITEM #57 REAR MOUNTING SCREW (LONG)

BORE	CODE	DRAWING	INTERCHANGE REMARKS
1.50	NF	135-B11	
	M77	135-B11	
	M	D25723-E11	N/A SUB 135-A11 REAR MOUNTING SCREW
	M	D25723-E12	N/A SUB 135-A11 REAR MOUNTING SCREW
	E	NOT REQD.	
2.50	NF	135-B11	
	M77	135-B11	
	M	D25723-E11	N/A SUB 135-A11 REAR MOUNTING SCREW
	E	NOT REQD.	
3.25	NF	135-B11	
	M77	135-B11	
	M	D25723-E11	N/A SUB 135-A11 REAR MOUNTING SCREW
	E	NOT REQD.	
4.00	NF	135-B11	
	M77	135-B11	
	M	D25723-E11	N/A SUB 135-A11 REAR MOUNTING SCREW
	M	D25723-E9	N/A SUB 135-A9 REAR MOUNTING SCREW
	E	NOT REQD.	
5.00	NF	135-B11	
	M77	135-B11	
	M	D25723-E11	N/A SUB 135-A11 REAR MOUNTING SCREW
	E	NOT REQD.	
6.00	NF	135-B11	
	M77	135-B11	
	M	D25723-E11	N/A SUB 135-A11 REAR MOUNTING SCREW
	E	NOT REQD.	
8.00	NF	135-D17	
	M77	135-D17	
	M	D25430-G17	N/A SUB 135-D17 REAR MOUNTING SCREW
	E	NOT REQD.	
10.00	NF	135-D17	
	M77	135-D17	
	M	D25430-G17	N/A SUB 135-D17 REAR MOUNTING SCREW
	E	NOT REQD.	

DATA SUBJECT TO CHANGE WITHOUT NOTICE



# Anchor/Darling REPLACEMENT PARTS MANUAL

## ITEM #58 SEAL SCREW

BORE	CODE	DRAWING	INTERCHANGE REMARKS
1.50	NF	134-000	
	M77	134-000	
	M	506-00025-000	N/A SUB 134-000 SEAL SCREW
	/	D27259C	N/A SUB 134-000 SEAL SCREW
2.50	NF	134-000	
	M77	134-000	
	M	506-00025-000	N/A SUB 134-000 SEAL SCREW
	/	D27259C	N/A SUB 134-000 SEAL SCREW
3.25	NF	134-000	
	M77	134-000	
	M	506-00025-000	N/A SUB 134-000 SEAL SCREW
	/	D27259C	N/A SUB 134-000 SEAL SCREW
4.00	NF	134-000	
	M77	134-000	
	M	506-00025-000	N/A SUB 134-000 SEAL SCREW
	/	D27259C	N/A SUB 134-000 SEAL SCREW
5.00	NF	134-000	
	M77	134-000	
	M	506-00025-000	N/A SUB 134-000 SEAL SCREW
	/	D27259C	N/A SUB 134-000 SEAL SCREW
6.00	NF	134-000	
	M77	134-000	
	M	506-00025-000	N/A SUB 134-000 SEAL SCREW
	/	D27259C	N/A SUB 134-000 SEAL SCREW
8.00	NF	134-000	
	M77	134-000	
	M	506-00025-000	N/A SUB 134-000 SEAL SCREW
	/	D27259C	N/A SUB 134-000 SEAL SCREW
10.00	NF	134-000	
	M77	134-000	
	M	506-00025-000	N/A SUB 134-000 SEAL SCREW
	/	D27259C	N/A SUB 134-000 SEAL SCREW

DATA SUBJECT TO CHANGE WITHOUT NOTICE





# Anchor/Darling

## REPLACEMENT PARTS MANUAL

### ITEM #59 FILLER PLUG (FITTING) ETHYLENE-PROPYLENE

BORE	CODE	DRAWING	INTERCHANGE REMARKS
1.50	NF	506-00021-000	
	M77	506-00021-000	
	M	506-00021-000	
	/	D30686	N/A SUB 506-00021-000 FILLER PLUG
2.50	NF	506-00021-000	
	M77	506-00021-000	
	M	506-00021-000	
	/	D30686	N/A SUB 506-00021-000 FILLER PLUG
	E	35264	N/A SUB 506-00021-000 FILLER PLUG
	E	35264A	N/A SUB 506-00021-000 FILLER PLUG
3.25	NF	506-00021-000	
	M77	506-00021-000	
	M	506-00021-000	
	/	D30686	N/A SUB 506-00021-000 FILLER PLUG
	E	35264	N/A SUB 506-00021-000 FILLER PLUG
	E	35264A	N/A SUB 506-00021-000 FILLER PLUG
4.00	NF	506-00021-000	
	M77	506-00021-000	
	M	506-00021-000	
	/	D30686	N/A SUB 506-00021-000 FILLER PLUG
	E	35264A	N/A SUB 506-00021-000 FILLER PLUG
	E	30740	N/A SUB 506-00021-000 FILLER PLUG
5.00	NF	506-00021-000	
	M77	506-00021-000	
	M	506-00021-000	
	/	D30686	N/A SUB 506-00021-000 FILLER PLUG
6.00	NF	506-00021-000	
	M77	506-00021-000	
	M	D30686	N/A SUB 506-00021-000 FILLER PLUG
	E	NOT MANUFD.	
8.00	NF	506-00021-000	
	M77	506-00021-000	
	M	506-00021-000	
	/	D30686	N/A SUB 506-00021-000 FILLER PLUG
10.00	NF	506-00021-000	
	M77	506-00021-000	
	M	506-00021-000	
	/	D30686	N/A SUB 506-00021-000 FILLER PLUG

DATA SUBJECT TO CHANGE WITHOUT NOTICE

## ITEM #60 REAR MOUNTING SCREW (SHORT)

BORE	CODE	DRAWING	INTERCHANGE REMARKS
1.50	NF	135-B9	
	M77	135-B9	
	M	D25723-E9	N/A SUB 135-A9 REAR MOUNTING SCREW
	E	NOT REQD.	
2.50	NF	135-B9	
	M77	135-B9	
	M	D25723-E9	N/A SUB 135-A9 REAR MOUNTING SCREW
	E	NOT REQD.	
3.25	NF	135-B9	
	M77	135-B9	
	M	D25723-E9	N/A SUB 135-A9 REAR MOUNTING SCREW
	E	NOT REQD.	
4.00	NF	135-B9	
	M77	135-B9	
	M	D25723-E9	N/A SUB 135-A9 REAR MOUNTING SCREW
	E	NOT REQD.	
5.00	NF	135-B9	
	M77	135-B9	
	M	D25723-E9	N/A SUB 135-A9 REAR MOUNTING SCREW
	E	NOT REQD.	
6.00	NF	135-B9	
	M77	135-B9	
	M	D25723-E9	N/A SUB 135-A9 REAR MOUNTING SCREW
	E	NOT REQD.	NOT MANUFD.
8.00	NF	135-D13	
	M77	135-D13	
	M	D25430-G13	N/A SUB 135-D13 REAR MOUNTING SCREW
	E	NOT REQD.	
10.00	NF	135-D13	
	M77	135-D13	
	M	D25430-G13	N/A SUB 135-D13 REAR MOUNTING SCREW
	E	NOT REQD.	

## ITEM #61 TIE ROD (SHORT)

BORE	CODE	DRAWING	INTERCHANGE REMARKS
1.50	NF	NOT REQD.	
	M77	NOT REQD.	
	M	202-1060-001	X 7.81 LG FOR 6.00 STROKE .312 DIA. X 13.81 LG FOR 12.00 STROKE .312 DIA. X 19.81 LG FOR 18.00 STROKE .312 DIA.
	M	D31387	N/A SUB 202-1060-001 X 8.66 LG T/R FOR 6.00 STROKE .312 DIA. X 14.66 LG T/R FOR 12.00 STROKE .312 DIA. X 20.66 LG T/R FOR 18.00 STROKE .312 DIA.
	E	NOT REQD.	



# Anchor/Darling

## REPLACEMENT PARTS MANUAL

### ITEM #61 TIE ROD (SHORT) (Continued)

BORE	CODE	DRAWING	INTERCHANGE REMARKS
2.50	NF	NOT REQD.	
	M77	NOT REQD.	
	M	202-1060-003	X 7.97 LG FOR 6.00 STROKE .312 DIA. X 13.97 LG FOR 12.00 STROKE .312 DIA. X 19.97 LG FOR 18.99 STROKE .312 DIA.
	M	D31271	N/A SUB 202-1060-003 X 8.88 LG T/R FOR 6.00 STROKE .312 DIA. X 14.88 LG T/R FOR 12.00 STROKE .312 DIA. X 20.88 LG T/R FOR 18.00 STROKE .312 DIA.
	E	NOT REQD.	
3.25	NF	NOT REQD.	
	M77	NOT REQD.	
	M	202-1060-005	X 8.81 LG FOR 6.00 STROKE .375 DIA. X 14.81 LG FOR 12.00 STROKE .375 DIA. X 20.81 LG FOR 18.00 STROKE .375 DIA.
	M	D31615	N/A SUB 202-1060-005 X 9.41 LG T/R FOR 6.00 STROKE .375 DIA. X 15.41 LG T/R FOR 12.00 STROKE .375 DIA. X 21.41 LG T/R FOR 18.00 STROKE .375 DIA.
	E	NOT REQD.	
4.00	NF	NOT REQD.	
	M77	NOT REQD.	
	M	202-1060-007	X 9.03 LG FOR 6.00 STROKE .375 DIA. X 15.03 LG FOR 12.00 STROKE .375 DIA. X 21.03 LG FOR 18.00 STROKE .375 DIA.
	M	D31410	N/A SUB 202-1060-007 X 9.62 LG T/R FOR 6.00 STROKE .375 DIA. X 15.62 LG T/R FOR 12.00 STROKE .375 DIA. X 21.62 LG T/R FOR 18.00 STROKE .375 DIA.
	M	D31410A	X 15.62 LG FOR 12.00 STROKE .375 DIA.
	E	NOT REQD.	
5.00	NF	NOT REQD.	
	M77	NOT REQD.	
	M	202-1060-009	X 9.94 LG FOR 6.00 STROKE .500 DIA. X 15.94 LG FOR 12.00 STROKE .500 DIA. X 21.94 LG FOR 18.00 STROKE .500 DIA.
	M	D31511A	N/A SUB 202-1060-009 X 10.44 LG T/R FOR 6.00 STROKE .500 DIA. X 16.44 LG T/R FOR 12.00 STROKE .500 DIA. X 22.44 LG T/R FOR 18.00 STROKE .500 DIA.
	E	NOT REQD.	

DATA SUBJECT TO CHANGE WITHOUT NOTICE



# Anchor/Darling REPLACEMENT PARTS MANUAL

## ITEM #61 TIE ROD (SHORT) (Continued)

BORE	CODE	DRAWING	INTERCHANGE REMARKS
6.00	NF	NOT REOD.	
	M77	NOT REOD.	
	M	202-1060-011	X 10.12 LG FOR 6.00 STROKE .500 DIA. X 16.12 LG FOR 12.00 STROKE .500 DIA. X 22.12 LG FOR 18.00 STROKE .500 DIA.
	M	D31586A	N/A SUB 202-1060-011 X 10.88 LG T/R FOR 6.00 STROKE .500 DIA. X 16.88 LG T/R FOR 12.00 STROKE .500 DIA. X 22.88 LG T/R FOR 18.00 STROKE .500 DIA.
	E	NOT REQD.	NOT MANUFD.
8.00	NF	NOT REQD.	
	M77	NOT REQD.	
	M	202-1060-013	X 12.38 LG FOR 6.00 STROKE .625 DIA. X 18.38 LG FOR 12.00 STROKE .625 DIA. X 24.38 LG FOR 18.00 STROKE .625 DIA.
	E	NOT REQD.	
10.00	NF	NOT REQD.	
	M77	NOT REQD.	
	M	202-1060-015	X 13.75 LG FOR 6.00 STROKE .625 DIA. X 19.75 LG FOR 12.00 STROKE .625 DIA. X 25.75 LG FOR 18.00 STROKE .625 DIA.

## ITEM #62 FRONT MOUNTING SCREW

BORE	CODE	DRAWING	INTERCHANGE REMARKS
1.50	NF	135-B5	
	M77	135-B5	
	M	D25723-E7	N/A SUB 135-A7 FRONT MOUNTING SCREW
	E	NOT REQD.	
2.50	NF	135-B5	
	M77	135-B5	
	M	D25723-F8	N/A SUB 135-B8 FRONT MOUNTING SCREW
	E	NOT REQD.	
3.25	NF	135-B7	
	M77	135-B7	
	M	D25723-F8	N/A SUB 135-B8 FRONT MOUNTING SCREW
	E	NOT REQD.	



# Anchor/Darling REPLACEMENT PARTS MANUAL

## ITEM #62 FRONT MOUNTING SCREW (Continued)

BORE	CODE	DRAWING	INTERCHANGE REMARKS
4.00	NF	135-B7	
	M77	135-B7	
	M	D25723-F8	N/A SUB 135-B8 FRONT MOUNTING SCREW
	E	NOT REQD.	
5.00	NF	135-B7	
	M77	135-B7	
	M	D25723-F10	N/A SUB 135-B10 FRONT MOUNTING SCREW
	E	NOT REQD.	
6.00	NF	135-C7	
	M77	135-C7	
	M	D25723-G11	N/A SUB 135-C11 FRONT MOUNTING SCREW
	E	NOT REQD.	
8.00	NF	135-E10	
	M77	135-E10	
	M	D25723-H13	N/A SUB 135-E13 FRONT MOUNTING SCREW
	E	NOT REQD.	
10.00	NF	135-E10	
	M77	135-E10	
	M	D25723-H13	N/A SUB 135-E13 FRONT MOUNTING SCREW
	E	NOT REQD.	

## ITEM #63 REAR MOUNTING LUG

BORE	CODE	DRAWING	INTERCHANGE REMARKS
1.50	NF	NOT REQD.	
	M77	NOT REQD.	
	M	D31385	N/A SUB*: (1) 306-40111-000 RESERVOIR (ACCUMULATOR) CAP A/R (2) 202-1060-002 T/R (LONG) + (2) 202-1060-001 T/R (SHORT)
	E	NOT REQD.	
2.50	NF	NOT REQD.	
	M77	NOT REQD.	



# Anchor/Darling REPLACEMENT PARTS MANUAL

## ITEM #63 REAR MOUNTING LUG (Continued)

BORE	CODE	DRAWING	INTERCHANGE REMARKS
2.50	M	D31273	N/A SUB*: (1) 306-40112-000 RESERVOIR (ACCUMULATOR) CAP A/R (2) 202-1060-004 T/R (LONG) + (2) 202-1060-003 T/R (SHORT)
	E	NOT REQD.	
3.25	NF	NOT REQD.	
	M77	NOT REQD.	
	M	D31407	N/A SUB*: (1) 306-40113-000 RESERVOIR (ACCUMULATOR) CAP A/R (2) 202-1060-006 T/R (LONG) + (2) 202-1060-005 T/R (SHORT)
	E	NOT REQD.	
4.00	NF	NOT REQD.	
	M77	NOT REQD.	
	M	D31407A	N/A SUB*: (1) 306-40114-000 RESERVOIR (ACCUMULATOR) CAP A/R (2) 202-1060-008 T/R (LONG) + (2) 202-1060-007 T/R (SHORT)
	E	NOT REQD.	
5.00	NF	NOT REQD.	
	M77	NOT REQD.	
	M	D31508	N/A SUB*: (1) 306-40115-000 RESERVOIR (ACCUMULATOR) CAP A/R (2) 202-1060-010 T/R (LONG) + (2) 202-1060-009 T/R (SHORT)
	E	NOT REQD.	
6.00	NF	NOT REQD.	
	M77	NOT REQD.	
	M	D31576	N/A SUB*: (1) 306-40116-000 RESERVOIR (ACCUMULATOR) CAP A/R (2) 202-1060-012 T/R (LONG) + (2) 202-1060-011 T/R (SHORT)
	E	NOT REQD.	NOT MANUFD.
8.00	NF	NOT REQD.	
	M77	NOT REQD.	

DATA SUBJECT TO CHANGE WITHOUT NOTICE



# Anchor/Darling REPLACEMENT PARTS MANUAL

## ITEM #63 REAR MOUNTING LUG (Continued)

BORE	CODE	DRAWING	INTERCHANGE REMARKS
8.00	M	D31707	N/A SUB*: (1) 306-40117-000 RESERVOIR (ACCUMULATOR) CAP A/R (2) 202-1060-014 T/R (LONG) + (2) 202-1060-013 T/R (SHORT)
	E	NOT REQD.	
10.00	NF	NOT REQD.	
	M77	NOT REQD.	
	M	D31707	N/A SUB*: (1) 306-40117-000 RESERVOIR (ACCUMULATOR) CAP A/R (2) 202-1060-016 T/R (LONG) + (2) 202-1060-015 T/R (SHORT)
	E	NOT REQD.	

## ITEM #64 SPRING GUIDE (BEARING)

BORE	CODE	DRAWING	INTERCHANGE REMARKS
1.50	NF	127-001	
	M77	127-001	
	M	D31913	N/A SUB: (1) 127-001 SPRING GUIDE A/R 202-1014-001 RESERVOIR SPRINGS*
	E	NOT MANUFD.	
2.50	NF	127-002	
	M77	127-002	
	M	D28557	N/A SUB: (1) 127-002 SPRING GUIDE A/R (2) 202-1014-002 RESERVOIR SPRINGS*
	E	D28557	N/A SUB: (1) 127-002 SPRING GUIDE A/R 202-1014-002 RESERVOIR SPRINGS*
3.25	NF	127-003	
	M77	127-003	
	M	D29395	N/A SUB: (1) 127-003 SPRING GUIDE A/R 202-1014-003 RESERVOIR SPRINGS*
	E	D28557	N/A SUB: (1) 127-003 SPRING GUIDE A/R 202-1014-003 RESERVOIR SPRINGS*

\*NEED QUANTITY OF 2 RESERVOIR SPRINGS FOR 12.00 STROKE AND QUANTITY OF 3 RESERVOIR SPRINGS FOR 18.00 STROKE.  
DATA SUBJECT TO CHANGE WITHOUT NOTICE

## ITEM #64 SPRING GUIDE (BEARING) (Continued)

BORE	CODE	DRAWING	INTERCHANGE REMARKS
4.00	NF	127-004	
	M77	127-004	
	M	D31498	N/A SUB: (1) 127-004 SPRING GUIDE A/R 202-1014-004 RESERVOIR SPRINGS*
	E	D29395	N/A SUB: (1) 127-004 SPRING GUIDE A/R 202-1014-004 RESERVOIR SPRINGS*
5.00	NF	127-005	
	M77	127-005	
	M	D31499	N/A SUB: (1) 127-005 SPRING GUIDE A/R 202-1014-005 RESERVOIR SPRINGS*
	E	NOT MANUFD.	
6.00	NF	127-006	
	M77	127-006	
	M	D31499	N/A SUB: (1) 127-006 SPRING GUIDE A/R 202-1014-006 RESERVOIR SPRINGS*
	E	NOT MANUFD.	
8.00	NF	127-007	
	M77	127-007	
	M	NOT MANUFD.	
	E	NOT MANUFD.	
10.00	NF	127-007	
	M77	127-007	
	M	NOT MANUFD.	
	E	NOT MANUFD.	

\*NEED QUANTITY OF 2 RESERVOIR SPRINGS FOR 12.00 STROKE AND QUANTITY OF 3 RESERVOIR SPRINGS FOR 18.00 STROKE.

## ITEM #65 INDICATOR PLATE

BORE	CODE	DRAWING	INTERCHANGE REMARKS
1.50	NF	384-1000-001*	FOR 6.00 STROKE
		384-1000-002*	FOR 12.00 STROKE
		384-1000-003*	FOR 18.00 STROKE
	M77	384-1000-001*	FOR 6.00 STROKE
		384-1000-002*	FOR 12.00 STROKE
		384-1000-003*	FOR 18.00 STROKE
	M	384-1000-001**	FOR 6.00 STROKE
		382-1000-002**	FOR 12.00 STROKE
		384-1000-003**	FOR 18.00 STROKE
E		NOT REQD.	

\*INDICATOR PLATES MUST BE USED WITH PARTS 124-2XX RESERVOIR TUBE, 123-XXX RESERVOIR PISTONS, 302-1021-XXX INDICATOR ROD, AND 302-1012-XXX PROTECTIVE TUBE.

\*\*THE RESERVOIR OVERFLOW VENT LOCATION IS DIRECTLY RELATED TO INDICATOR ROD, PISTON ROD AND RESERVOIR FLUID LEVELS. RECALIBRATE AS REQUIRED INDICATOR PLATE LOCATION TO THE INDICATOR ROD TO VERIFY COMPONENT OPERABILITY.

DATA SUBJECT TO CHANGE WITHOUT NOTICE





# Anchor/Darling

## REPLACEMENT PARTS MANUAL

### ITEM #65 INDICATOR PLATE (Continued)

BORE	CODE	DRAWING	INTERCHANGE REMARKS
2.50	NF	384-1000-004*	FOR 6.00 STROKE
		384-1000-005*	FOR 12.00 STROKE
		384-1000-006*	FOR 18.00 STROKE
	M77	384-1000-004*	FOR 6.00 STROKE
		384-1000-005*	FOR 12.00 STROKE
		384-1000-006*	FOR 18.00 STROKE
	M	384-1000-004**	FOR 6.00 STROKE
		384-1000-005**	FOR 12.00 STROKE
		384-1000-006**	FOR 18.00 STROKE
E	NOT REQD.		
3.25	NF	384-1000-007*	FOR 6.00 STROKE
		384-1000-008*	FOR 12.00 STROKE
		384-1000-009*	FOR 18.00 STROKE
	M77	384-1000-007*	FOR 6.00 STROKE
		384-1000-008*	FOR 12.00 STROKE
		384-1000-009*	FOR 18.00 STROKE
	M	384-1000-007**	FOR 6.00 STROKE
		384-1000-008**	FOR 12.00 STROKE
		384-1000-009**	FOR 18.00 STROKE
E	NOT REQD.		
4.00 thru 6.00	NF	384-1000-010*	FOR 6.00 STROKE
		384-1000-011*	FOR 12.00 STROKE
		384-1000-012*	FOR 18.00 STROKE
	M77	384-1000-010*	FOR 6.00 STROKE
		384-1000-011*	FOR 12.00 STROKE
		384-1000-012*	FOR 18.00 STROKE
	M	384-1000-010**	FOR 6.00 STROKE
		384-1000-011**	FOR 12.00 STROKE
		384-1000-012**	FOR 18.00 STROKE
E	NOT REQD.		
8.00	NF, M77	384-1000-013*	FOR 6.00 STROKE
		384-1000-014*	FOR 12.00 STROKE
		384-1000-015*	FOR 18.00 STROKE
	M	384-1000-013**	FOR 6.00 STROKE
		384-1000-014**	FOR 12.00 STROKE
		384-1000-015**	FOR 18.00 STROKE
E	NOT REQD.		

\*INDICATOR PLATES MUST BE USED WITH PARTS 124-2XX RESERVOIR TUBE, 123-XXX RESERVOIR PISTONS, 302-1021-XXX INDICATOR ROD, AND 302-1012-XXX PROTECTIVE TUBE.

\*\*THE RESERVOIR OVERFLOW VENT LOCATION IS DIRECTLY RELATED TO INDICATOR ROD, PISTON ROD AND RESERVOIR FLUID LEVELS. RECALIBRATE AS REQUIRED INDICATOR PLATE LOCATION TO THE INDICATOR ROD TO VERIFY COMPONENT OPERABILITY.

DATA SUBJECT TO CHANGE WITHOUT NOTICE

## ITEM #65 INDICATOR PLATE (Continued)

BORE	CODE	DRAWING	INTERCHANGE REMARKS
10.00	NF	384-1000-016*	FOR 6.00 STROKE
		384-1000-017*	FOR 12.00 STROKE
		384-1000-018*	FOR 18.00 STROKE
	M77	384-1000-016*	FOR 6.00 STROKE
		384-1000-017*	FOR 12.00 STROKE
		384-1000-018*	FOR 18.00 STROKE
	M	384-1000-016**	FOR 6.00 STROKE
		384-1000-017**	FOR 12.00 STROKE
		384-1000-018**	FOR 18.00 STROKE
E	NOT REQD.		

\* INDICATOR PLATES MUST BE USED WITH PARTS 124-2XX RESERVOIR TUBE, 123-XXX RESERVOIR PISTONS, 302-1021-XXX INDICATOR ROD, AND 302-1012-XXX PROTECTIVE TUBE.

\*\* THE RESERVOIR OVERFLOW VENT LOCATION IS DIRECTLY RELATED TO INDICATOR ROD, PISTON ROD AND RESERVOIR FLUID LEVELS. RECALIBRATE AS REQUIRED INDICATOR PLATE LOCATION TO THE INDICATOR ROD TO VERIFY COMPONENT OPERABILITY.

## ITEM #66 RESERVOIR (ACCUMULATOR) MOUNTING SCREW

BORE	CODE	DRAWING	INTERCHANGE REMARKS
1.50	NF	NOT REQD.	
	M77	NOT REQD.	
	M	NOT REQD.	
	E	D25723-F3	N/A SUB. 135-B3 RESERVOIR MOUNTING SCREW
2.50	NF	NOT REQD.	
	M77	NOT REQD.	
	M	NOT REQD.	
	E	D25723-4	N/A SUB. 135-B4 RESERVOIR MOUNTING SCREW
3.25	NF	NOT REQD.	
	M77	NOT REQD.	
	M	NOT REQD.	
	E	D25723-F4	N/A SUB. 135-B4 RESERVOIR MOUNTING SCREW
4.00	NF	NOT REQD.	
	M77	NOT REQD.	
	M	NOT REQD.	
	E	D25723-F4	N/A SUB. 135-B4 RESERVOIR MOUNTING SCREW
5.00	NF	NOT REQD.	
	M77	NOT REQD.	
	M	NOT REQD.	
	E	D25723-F4	N/A SUB. 135-B4 RESERVOIR MOUNTING SCREW
6.00	NF	NOT REQD.	
	M77	NOT REQD.	
	M	NOT REQD.	
	E	NOT MANUFD.	
8.00	NF	NOT REQD.	
	M77	NOT REQD.	



**Anchor/Darling**

# REPLACEMENT PARTS MANUAL

## ITEM #66 RESERVOIR (ACCUMULATOR) MOUNTING SCREW

BORE	CODE	DRAWING	INTERCHANGE REMARKS
8.00	M	NOT REQD.	
	E	D25723-F8	N/A SUB. 135-B8 RESERVOIR MOUNTING SCREW
10.00	NF	NOT REQD.	
	M77	NOT REQD.	
	M	NOT REQD.	
	E	D25723-F8	N/A SUB. 135-B8 RESERVOIR MOUNTING SCREW

## ITEM #67 THRUST WASHER AT MOUNTING SCREW

## ITEM #68 LOCK WASHER AT MOUNTING SCREW

## ITEM #69 MOUNTING FOOT ANGLE

(Item #'s 67 through 69 E — Discontinued)

## ITEM #70 GLAND SCREW

BORE	CODE	DRAWING	INTERCHANGE REMARKS
1.50	NF	135-B7	20 PIECE MINIMUM ORDER QUANTITY
	M77	135-B7	20 PIECE MINIMUM ORDER QUANTITY
	M	NOT REQD.	
	E	NOT REQD.	
2.50	NF	135-B7	20 PIECE MINIMUM ORDER QUANTITY
	M77	135-B7	20 PIECE MINIMUM ORDER QUANTITY
	M	NOT REQD.	
	E	NOT REQD.	
3.25	NF	135-B7	20 PIECE MINIMUM ORDER QUANTITY
	M77	135-B7	20 PIECE MINIMUM ORDER QUANTITY
	M	NOT REQD.	
	E	NOT REQD.	
4.00	NF	135-C8	20 PIECE MINIMUM ORDER QUANTITY
	M77	135-C8	20 PIECE MINIMUM ORDER QUANTITY
	M	NOT REQD.	
	E	NOT REQD.	
5.00	NF	135-F8	20 PIECE MINIMUM ORDER QUANTITY
	M77	135-F8	20 PIECE MINIMUM ORDER QUANTITY
	M	NOT REQD.	
	E	NOT REQD.	



# Anchor/Darling REPLACEMENT PARTS MANUAL

## ITEM #70 GLAND SCREW (Continued)

BORE	CODE	DRAWING	INTERCHANGE REMARKS
6.00	NF	135-F8	20 PIECE MINIMUM ORDER QUANTITY
	M77	135-F8	20 PIECE MINIMUM ORDER QUANTITY
	M	NOT REQD.	
	E	NOT REQD.	
8.00	NF	135-G11	20 PIECE MINIMUM ORDER QUANTITY
	M77	135-G11	20 PIECE MINIMUM ORDER QUANTITY
	M	NOT REQD.	
	E	NOT REQD.	
10.00	NF	135-G11	20 PIECE MINIMUM ORDER QUANTITY
	M77	135-G11	20 PIECE MINIMUM ORDER QUANTITY
	M	NOT REQD.	
	E	NOT REQD.	

## ITEM #71 FILTER PLUG

(Item #71 — Discontinued)

## ITEM #72 FILLER PLUG DUST SEAL

BORE	CODE	DRAWING	INTERCHANGE REMARKS
ALL SIZES	NF	1-1050-000	
	M77	1-1050-000	
	M	1-1050-000	
	E	1-1050-000	

## ITEM #73 CALIBRATED VALVES

BORE	CODE	DRAWING	INTERCHANGE REMARKS
1.50	NF, M77, M	302-1066-001	STD. VALVE NON-RELIEF
		302-1127-001	RELIEF VALVE (3000 PSI)
		302-1127-101	RELIEF VALVE (6800 PSI)
2.50	NF, M77, M	302-1066-002	STD. VALVE NON-RELIEF
		302-1127-002	RELIEF VALVE (3000 PSI)
		302-1127-102	RELIEF VALVE (6800 PSI)
3.25	NF, M77, M	302-1066-003	STD. VALVE NON-RELIEF
		302-1127-003	RELIEF VALVE (3000 PSI)
		302-1127-103	RELIEF VALVE (6800 PSI)



# Anchor/Darling REPLACEMENT PARTS MANUAL

## ITEM #73 CALIBRATED VALVES (Continued)

BORE	CODE	DRAWING	INTERCHANGE REMARKS
4.00	NF, M77, M	302-1066-004	STD. VALVE NON-RELIEF
		302-1127-004	RELIEF VALVE (3000 PSI)
		302-1127-104	RELIEF VALVE (6800 PSI)
5.00	NF, M77, M	302-1066-005	STD. VALVE NON-RELIEF
		302-1127-005	RELIEF VALVE (3000 PSI)
		302-1127-105	RELIEF VALVE (6800 PSI)
6.00	NF, M77, M	302-1066-006	STD. VALVE NON-RELIEF
		302-1127-006	RELIEF VALVE (3000 PSI)
		302-1127-106	RELIEF VALVE (6800 PSI)
8.00	NF, M77, M	302-1066-007	STD. VALVE NON-RELIEF
		302-1127-007	RELIEF VALVE (3000 PSI)
		302-1127-107	RELIEF VALVE (6800 PSI)
10.00	NF, M77, M	302-1066-008	STD. VALVE NON-RELIEF
		302-1127-008	RELIEF VALVE (3000 PSI)
		302-1127-108	RELIEF VALVE (6800 PSI)

## ITEM #74 MILL BLANK POPPET

## ITEM #75 BLANK POPPET

(Item #'s 74 & 75 E — Discontinued)

## ITEM #76 SF1154 SILICONE HYDRAULIC FLUID

BORE	CODE	DRAWING	INTERCHANGE REMARKS
ALL	NF	SF1154	
	M77	SF1154	
	M	96-200*	
	E	96-200*	

\*IF CONTINUED USE OF 96-200 IS REQUIRED, CONSULT ANCHOR/DARLING ENGINEERING DEPT.

## ITEM #77 WARNING TAG

BORE	CODE	DRAWING	INTERCHANGE REMARKS
ALL	ALL	150-000	

DATA SUBJECT TO CHANGE WITHOUT NOTICE



**Anchor/Darling**  
**REPLACEMENT PARTS MANUAL**

**NOTES**



**Anchor/Darling**

# **REPLACEMENT PARTS MANUAL**

**NOTES**



**Anchor/Darling**  
**REPLACEMENT PARTS MANUAL**

**NOTES**





**Anchor/Darling**

# **REPLACEMENT PARTS MANUAL**

**NOTES**

*For Further Information Contact:*

**ANCHOR/DARLING**

32 Moulton Street • Laconia, NH 03246  
TEL: (603) 528-1931 • FAX: (603) 528-6381

**REGIONAL OFFICES**

Arizona .....	(602) 435-2662	Chicago .....	(708) 255-6220
Atlanta .....	(404) 925-2725	Houston .....	(713) 686-0882
Boston .....	(617) 293-3739	Philadelphia .....	(215) 527-9000
Charlotte .....	(704) 536-0673	San Francisco .....	(415) 389-8717
Illinois .....	(708) 377-8727	Tennessee .....	(615) 691-3014